



©CHANCE '87

THE PARTY ANIMAL
WANTS YOU!



Chicago in '91

CHICAGO IN '91, P. O. BOX A3120, CHICAGO, IL. 60690

A paid, non-political presentation of the Party Animal Party.

CATCH A DOUBLOON: NOLA CON II

PROGRESS REPORT 2 / NOLA CON II
921 Canal Street, Suite 831, New Orleans LA 70112
(504) 525-6008



Ned Dameron

NOLA CON II

THE 46TH WORLD SCIENCE FICTION CONVENTION
SEPT. 1-5, 1988
NEW ORLEANS, LOUISIANA

DONALD A WOLLHEIM — GUEST OF HONOR
ROGER SIMS — FAN GUEST OF HONOR
MIKE RESNICK — TOASTMASTER

Catch a Doubloon: Nolacon II Progress Report 2 is copyright 1987 by the Nolacon Corporation, a non-profit literary organization.
Guy H. Lillian III, editor. "World Science Fiction Society", "WSFS", "World Science Fiction Convention", "Worldcon", "Science Fiction Achievement Award", "Hugo Award", and "NASFiC" are service marks of the World Science Fiction Society, an unincorporated literary society. DCXLIII.

NOLAACON II THE 46TH WORLD SCIENCE FICTION CONVENTION BASICS

The Event...
NOLAACON II — the 46th World Science Fiction Convention!

The Dates...
September 1-5, 1988!

The Site...
The **Marriott Hotel**, 555 Canal St., New Orleans LA 70140, and the **Sheraton Hotel**, 500 Canal St., New Orleans, LA 70130.

The Rates...
Marriott: single, \$64; double, \$74; suites, \$186-296.
Sheraton: single, \$62; double, \$75; triple, \$85; quad, \$89; suites, \$215 - 365.

Reservations will be accepted only through the World Science Fiction Society Housing Bureau.

Memberships...
Supporting memberships: \$30 until 7-14-88.
Attending memberships: \$60 till 12-31-87
\$70 till 7-14-88.

No through-the-mail memberships postmarked after July 14 (Bastille Day), 1988 will be accepted.

At the door memberships: \$100 on 9-1 and 9-2-88.

Reservation forms are enclosed in this p.r. or are available upon request. **Separate reservations will not be accepted.**

\$75 on 9-3

\$50 on 9-4

\$25 on 9-5 or by the single day.

Children's memberships: \$25

Kids' memberships will be available to folks under 13 years of age as of 9-5-88. They may attend our special Children's Programming, or all programming if accompanied by an adult with a full attending membership. They'll receive no ballots or publications.

Converting...

Both Supporting and Attending members receive all convention publications and the right to vote for the Hugo Awards and in the 1991 site selection contest. Only Attending members, however, can actually come to the convention.

A Supporting member may move up to Attending status by paying the difference between what he or she has already paid and the cost of an Attending membership at the time. **Example:** If you became a Supporting member of Nolacon II by voting in the 1988 worldcon race, you've paid \$20. If you convert before December 31, 1987, you will owe an additional \$40 to become an Attending member. If you wait until January,

you'll owe \$50: the difference between the Attending price at that time and what you have already paid. Naturally, if you paid \$30 for your Supporting membership, you'll owe \$10 less. **Presupporters** of the New Orleans in '88 worldcon bid may deduct \$5 from whatever membership they buy for themselves.

Bids for 1991...

Chicago and **Sydney** have qualified to bid for the 1991 worldcon. For information write the committees at:

Chicago: P.O. Box A3120, Chicago IL 60690;

Sydney: GPO Box 4435, Sydney 2001 Australia.

Advertising...

Nolacon II offers space in its progress reports and program book to tasteful advertising within the SF genre. **Fan rates:** Full page — \$80; Half page (horizontal or vertical) — \$50; Quarter page (corner only) — \$30; Eighth page — \$20. Professional rates are negotiable. Contact Nolacon II publications at the office address above.

Department heads...

If you have a question about one of Nolacon's departments, write directly to the one in charge! Unless otherwise indicated, use the address above. Correspondents kind enough to include self-addressed stamped envelopes can count on the quickest replies.

Chairman: John H. Guidry

Suggestions, general questions, all volunteer forms should go to our Fearless Leader.

President and Business Manager: Justin Winston

Business queries should be keyed to Justin's attention.

Memberships: Mary Wismer

Conversions? Problems? New memberships? Our busiest staff member is the one to contact.

Publications and Publicity: Guy H. Lillian III

Ads, artwork, and letters of comment for our progress reports and program book should be marked "Attention GHLIII".

Programming: Dennis Dolbear

Get in touch with Dennis if you have a suggestion or question about Nolacon II panels and events.

Specialty Programming: Rick Norwood, Rusty Burke, Dick and Nicki Lynch

Children's programming: contact Rick at Box 336, Moun-

tain Home TN 37684. Horror programming: Rusty is at 2501 Tanglewilde H-75, Houston TX 77063. Dick and Nicki are handling Fan programming at 4207 Davis Lane, Chattanooga TN 37416.

Dealers' Room: Dick Spelman

Check on the Dealers Room waiting list through P.O. Box 2079, Chicago IL 60690. See Dick's report later this issue.

Art Show: Elizabeth Pearse

To exhibit your creative work at Nolacon II contact The Team, Eh?! at 218 All Saints Crescent, Oakville, Ont. L6J 5M9 Canada. Don't affix your self-addressed envelopes with American stamps. They're valueless in Canada.

Masquerade: Drew Sanders

Join the costumers in the city where masquing is a way of life by writing Drew at 13567 Rayen, Arleta CA 91331.

Access: Samanda b Jeude

Write to Sam at P.O. Box 308, Lebanon GA 30146-0308 with questions and suggestions to help make Nolacon II accessible to everyone. Sam's local liaison is Vicky Webb.

Agent — Britain: Linda Pickersgill

All fees and inquiries from the British Isles should go to 7A Lawrence Road, S. Ealing, London W5 4XJ, United Kingdom. Supporting fee in British currency: 20 pounds to

7-14-88. Attending fee: 40 pounds to 12-31-87, 50 pounds 7-14-88. Children's: 16 pounds.

Filk: Eric Webb

Those with songs and the urge to sing them should write to Eric at 1205A Newport, Kenner, LA 70065.

Plus...

Pro Liaison: George Alec Effinger

Green Room: Debbie Hodgkinson, Gay Miller-Corrick, Marla Baer-Peckham

Technical Services: James Mule

Hotel Liaison: Ken Hafer

Costume Programming and Exhibits: Pat Vermeire

Movies: Joe Grillot

Computer Services: John Dillworth

Postmistress: Marian Drey

Hugo Awards Coordinators: Susan and Jim Satterfield

Minister without Portfolio: Michael Sinclair

Merchandising: Scott Wexler

AND: Ann Layman Chancellor, Hollie Domiano, Ricia Mainhardt, Mark Robinson, Maxie Pertuit, Tom Hanlon, Robert Neagle, Anne Hebert-Winston, JoAnn Montalbano, Carla Exposito, Renita Cassano, Charlie DuVal, Cheryl DuVal, Nancy Mayberry, Jaen Mayberry, Dan Meyer, Nancy Collins.

Cover Art: ANN LAYMAN CHANCELLOR



ABOVE: Planetarium Spectre
RIGHT: Chronometry



PAT MORRISSEY

Science-Fiction / Fantasy

The Pat Morrissey Project presents a set of 10 truly unique Science Fiction/Fantasy photo prints. Each unusual reproduction is hand signed and numbered in a limited edition of 100. These colorful matted prints will be the perfect gift for the avid Science Fiction/Fantasy collector. For more information and a peek at the rest of the set, send to:

The Pat Morrissey Project
47 High Street
Gardner, MA 01440

NEW ORLEANS

MARRIOTT

The Marriott
 555 Canal Street
 New Orleans LA 70140.
 PH: (504) 581-000.

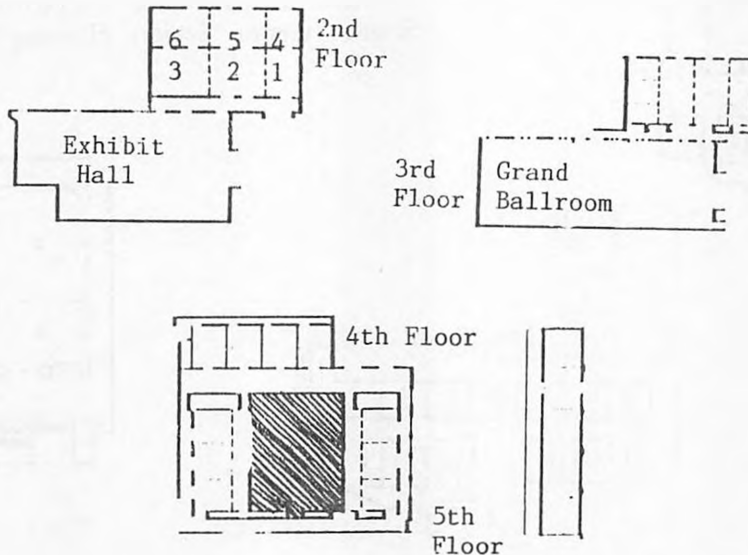
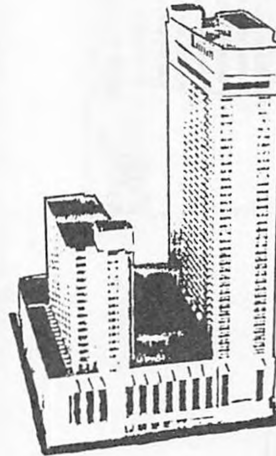
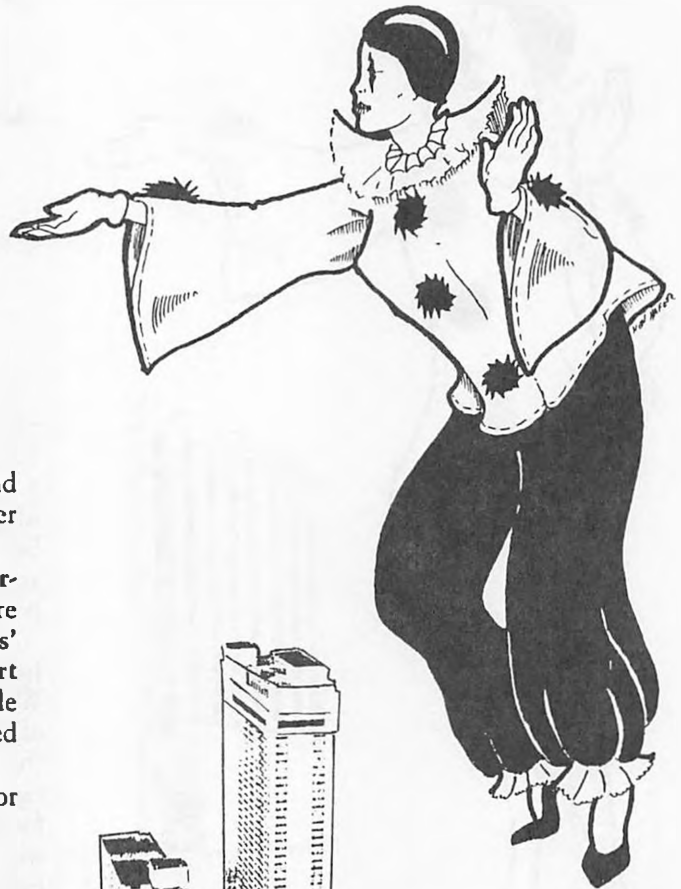
With 1,330 guest rooms on 41 floors, six restaurants and lounges, the Marriott is one of the most exciting hotels ever to host a worldcon.

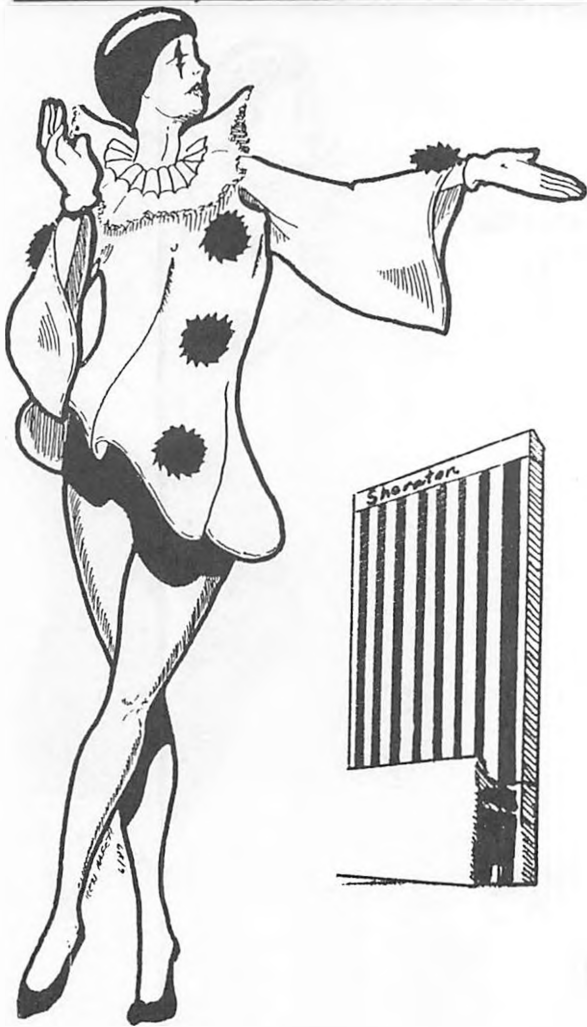
Nolacon's major ongoing events will be located at the Marriott. Its 3rd floor Grand Ballroom, with over 27,000 square feet of unobstructed space, has been tapped for the Dealers' Room. One floor below, the Exhibit Hall will host the Art Show, leaving the double-decked Mardi Gras ballroom available for auctions. Also, convention registration is currently aimed at the Marriott. Of course, details may well change.

Room rates at the Marriott are remarkably inexpensive for a first-rank hotel:

- Single: \$64
- Double: \$74
- Suites — one bedroom, Tower: \$188
- two bedrooms, Tower: \$262
- one bedroom, deluxe corner: \$222
- two bedrooms, deluxe corner: \$296

No worldcon ever enjoyed such excellent and cooperative accommodations. The Marriott and Sheraton both have pledged their complete assistance to make your 1988 worldcon wonderful.





Ken Hafer

Sheraton New Orleans

The Sheraton New Orleans
500 Canal Street
New Orleans LA 70130.
PH: (504) 525-2500.

Completed in March, 1983, the 49-story New Orleans Sheraton boasts 1,200 guest rooms, 84 luxury suites (including 12 poolside hospitality or party suites), 41 meeting rooms, and a total of 53,000 square feet of meeting, convention, and exhibit space. The layouts for the 3rd, 4th and 5th floors are shown below. Although details are far from completed, current plans are for the Sheraton to hold most of the programming for Nolacon II.

For instance, consider the **Grand Ballroom** on the 5th floor. Its pair of permanent projection booths make it ideal for movies. With 20,000 square feet of space, it would accommodate a group of 2,800 or a banquet of 1,980. The smaller meeting rooms on the 4th floor hold up to 375 people each. On the 8th floor, twelve Hospitality Suites adjoin the open-air pool deck, perfect for bid parties or any other use. Of the 84 total suites, 53 have wet bars, and the entire hotel is serviced by ten swift elevators, two lounges, and a world-class restaurant.

Nolacon II attendees will enjoy the Sheraton for extremely reasonable prices. The costs per night:

Single: \$62

Double: \$75

Triple: \$85

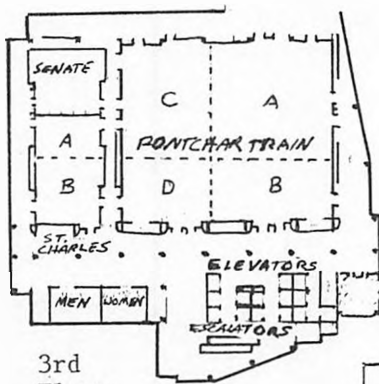
Quad: \$89.

One bedroom suite, small parlor: \$215

Two bedrooms, small parlor: \$275

One bedroom, large parlor: \$365

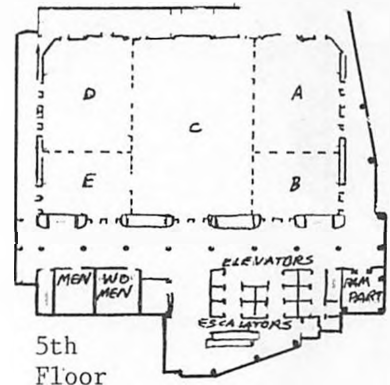
Reservations will be accepted only through the World Science Fiction Society Housing Bureau.



3rd
Floor



4th Floor

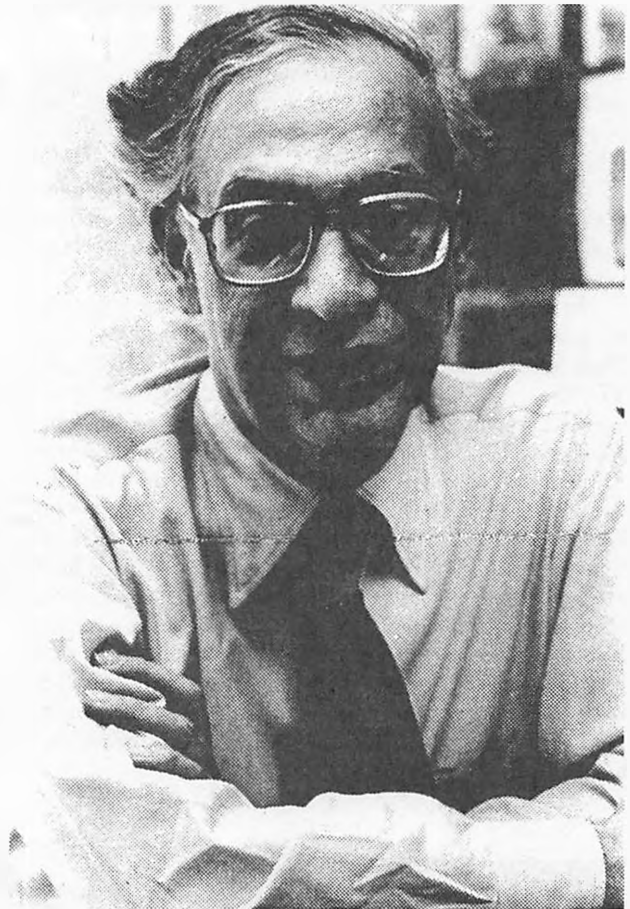


5th
Floor

OUR GUESTS...

DONALD A. WOLLHEIM

Donald A. Wollheim has excelled in almost every area of SF achievement. He was among the founders of science fiction fandom and was one of the pioneers of fan publishing. He has written 21 SF novels and a number of non-fiction works. As an anthologist he knows no peer, and his work with Avon, Ace and DAW Publishers, which he founded, has earned him credit kas "one of the most important editors in the history of science fiction." Discover and first book publisher of such SF greats as Philip K. Dick and Ursula K. LeGuin, "the Dean of Science Fiction" — also known as the Great Ghod "Ghu" — receives recognition long overdue as Professional Guest of Honor at Nolacon II.



MIKE RESNICK

Mike Resnick's novels include *Santiago*, *Tales of the Velvet Comet*, and his latest work from Tor Books, *The Dark Lady*. Dedicated world travelers, Mike and his wonderful wife Carol have several times won Best of Show honors at worldcon masquerades. Owner of one of the nation's largest Kennels, Mike's terrific SF and warm wit made him the natural choice for Toastmaster at Nolacon II.

ROGER SIMS

Co-chairman of Denvention, Roger Sims achieved perhaps his most lasting fame in fandom at the fabled room 770 party at the original Nolacon, in 1951. The "teddy bear" has been active in conventions and fanzine writing since sometime before the birth of the machine age, and is widely regarded as one of fandom's most gentle and genial spirits. A lifetime of jolly camaraderie will be celebrated as Roger serves as Fan Guest of Honor at Nolacon II.



PHOTO BY PATTI PERRET

PROGRAMMING

by Dennis Dolbear

The Programming Department of Nolacon II trundles on, still in the development stage for most of its areas. For those of you who have sent in program ideas, thanks — they've been taken into consideration, even if we haven't specifically responded to your suggestions. And of course, suggestions as to program items — whether new or repeats of old favorites, are still welcomed, as well as suggestions and comments on the operation of the department.

In certain specific areas: if you have any suggestions, advice, etc., in the Fan Programming department, please write Dick and Nicki Lynch, 4207 Davis Lane, Chattanooga, TN 37416. Development of this area is under their specific purview. Likewise, Rusty Burke, 2501 Tanglewilde H-75, Houston, TX 77063, is in charge of program development in the Horror/Fantasy area. One of Rusty's specific ideas is hosting a Hyborian Legion Banquet at the convention itself, with Novalyne Price Ellis as the speaker. Those familiar with the field recognize Ms. Ellis as the author of *One Who Walked Alone* (Don Grant), her insightful and evocative memoir of her friendship with Robert E. Howard, in the years just prior to his tragic suicide. In the case of Howard, the character of the man and his work are inseparable; students of the field will not wish to miss an opportunity to listen to, and converse with, Ms. Ellis. However, pre-convention support for this is necessary; please write Rusty if you're interested.



Guest of Honour C.J. CHERNYI CENTRAL HOTEL GLASGOW 29th July - 1st August 1988.

WIN A RETURN TRIP FOR TWO TO SCOTLAND

In July 1978 Scotland held its first ever SF convention. Next July we will be celebrating our 10th anniversary and we would like YOU to be here to help the party along.

If you sign-up either supporting or attending membership for Albacoon 88 your name will be placed in a prize draw, if your name is picked then you will win a trans-Atlantic return flight for two to Scotland for Albacoon 88 in July.



The Highland Express jumbo "Highlander" departs from Newark Airport and lands at Prestwick Airport near Glasgow. It returns to Newark from Prestwick.

So, take a chance, support Albacoon 88, or even better come along to the best European convention of 1988 and see it all for yourself. All you have to do is send the £ equivalent of £5.00 supporting membership or £10.00 attending to:

ALBACON 88, C/O MARK MEENAN, "BURKAWN", STIRLING RD, DUMBARTON, G82 2PJ, U.K.

THE CLOSING DATE FOR THE PRIZE DRAW IS 1st MARCH 1988 AND IS OPEN TO ALL FANS ON BOTH SIDES OF THE ATLANTIC. SO HURRY, DON'T MISS OUT ON THE OFFER OF THE YEAR, SEND OFF YOUR MEMBERSHIP NOW!

FOR FURTHER INFORMATION PHONE (U.K. CODE) 041 445 6379.

The Dimensional Masque organization is planning on presenting experimental video programming, in conjunction with more conventional video fare.

Several special events — what might be called extravaganzas by NESFA — are also in the works. Definitely planned are nightly dances featuring both taped music by various fan DJs as well as music by live groups.

Amongst the exhibits currently planned is a display of photographs by J. K. Potter and the late Clarence Laughlin. Many fans may not be familiar with the name of Clarence Laughlin, but in the area of book collecting (where he had few equals) and fantasy photography, his is a name to conjure with. His classic work, *Ghosts Along the Mississippi*, is still in print and worth examination. J.K. is a 1987 Hugo nominee whose work has appeared in books published by Scream Press, as well as on *Night Cry* magazine covers. Nolacon II plans a comprehensive show of their fantasy/surrealist photographic work.

A blanket mailing to S.F.W.A. and A.S.F.A. members is in preparation and should be ready shortly. However, we would like to involve more fans in this programming, even in areas generally considered "pro" programming. If you have a specific area of expertise, and would like to serve on a program item, please contact us at the convention address; we'll get a volunteer form back to you.

CactusCon has an impressive array of "specialty" program items, slide shows and the like, Nolacon II would like to repeat, or better, that success. If you have any ideas or suggestions here, please write us!

DEALERS' ROOM

by Dick Spelman

The Nolacon II Dealers' Room will be located in the Grand Ballroom of the New Orleans Marriott, the largest space in either of the convention's two hotels. Plans to use the nearby Rivergate Convention Center were dropped when the future of that building became doubtful, and to avoid the inconvenience to our members of a three-block-long walk to a separate facility.

We expect to have over two hundred booths and tables with a wide variety of merchandise. The prime locations have been given to those dealers who contributed to the New Orleans in '88 bid. Also, those dealers who responded to our original mailing by April 1st, 1987 have been guaranteed the number of tables requested, up to a maximum of three. Although we will add dealers to our waiting list on request, the odds of filling even the current requests are minimal.

Since all of the dealers whom you customarily see at a worldcon were included in our initial mailing, and no quotas were set for categories of merchandise, Nolacon II attendees may expect the usual wide assortment of books and magazines, original and reproduced artwork, handcrafted and costume jewelry, posters, comics, T-shirts, chain mail armor, games and gaming accessories, custom and stock buttons, and much, much more.

Although the sale of weapons will be permitted, dealers at Nolacon II will be required to wrap them securely at the time of sale and buyers will be responsible for complying with all New Orleans and Louisiana laws and ordinances and Nolacon II policies.

Address all inquiries about the Dealers' Room to:

Dick Spelman
P.O. Box 2079
Chicago IL 60690.

ART SHOW: WE CAME, WE SAW, WE SHOPPED

by Sandie Hollingshead and Suzanne Robinson

In the spirit of international cooperation, not to mention taking a vacation, two members of the Team, eh?! came down to New Orleans recently to have a look at the facilities and the city.

Currently, the Nolacon II Art Show is slated for the Exhibit Hall in the Marriott Hotel. The only thing really needed is improved lighting. This will require the addition of extra lights by the hotel. Final arrangements are being worked out.

Also, we are getting quotes from three local display houses in New Orleans for panels, tables, display cases and other assorted equipment. Why do we use professional equipment? We've used it before, and the reaction of the artists was extremely positive. Having someone else handle construction saves wear and tear on the Art Show staff, who are not getting any younger. Also, the panels are there. Once the quotes are in, we will finalize our budget and set display fees. If the cost of professional hangings is too great, we have the time to check out other options.

We expect to have all systems Go by the beginning of 1988. Elizabeth Pearse will be acting as registrar and all queries should be addressed to her, at:

218 All Saints Crescent
Oakville, Ontario L6J 5M9
Canada.
(416) 844-1634.

We have forwarded a special information flyer to everyone who sent us a letter. If you haven't heard anything, try again, or give Elizabeth a call (during cheap times of course).

The Nolacon II Art Show will consist of the display area, a special exhibit by Ken Moore, and a print shop operated by the Association of Science Fiction and Fantasy Artists. This print shop is only for the sale of prints in volume. Single copies of prints will be accepted by the Art Show and treated as original works. All that we will ask is that a print sold in the print shop not be placed for sale in the Art Show itself.

Now... the fun part. Our trip to New Orleans.

First and foremost we would like to thank the kind people who organized the business end of things. In particular we think Ann Layman Chancellor deserves a special vote of thanks for the cauliflower ear she got phoning people for us to see. As for the rest of you, you know who you are, and thanks.

Our Sunday in the Crescent City began very well, with a New Orleans tradition: breakfast at Brennan's. After leaving a dead white wine soldier, we marched out into the French Quarter and immediately discovered a jewelry store. We so impressed the saleslady with our Canadian friendliness and American money that she gave us the store's new address for our next visit... next year.

Upon concluding our convention business in the Marriott, we moved to another hotel in the French Quarter and thoroughly enjoyed this touch of the old life of New Orleans. However, one morning we were awakened by an argument under



Suzanne Robinson and Sandie Hollingshead sample Hurricanes at Pat O'Brien's.

our window as to whether or not one of the two men fighting was drunk. We agreed with the affirmation, but since neither of us sleep in much and it was a little late in the year for the Mardi Gras tradition of ladies leaning topless out of the window, we did not make our views known.

Daily we wandered around the Quarter spending money and eating very well. We have a tradition, in a new city, of walking around and simply choosing somewhere to eat by checking the menus displayed outside. In this way we discovered yet another waistline buster: Tujague's. A seven course dinner was leisurely served, and the beef brisket was to die for. (The bread pudding wasn't bad either.)

As New Orleans is on the Mississippi River, one of the best-known Canadian exports, we managed a trip into the bayou on the Creole Queen riverboat. Later on in the week, we turned the child in us loose and took a paddleboat ride up to the New Orleans Zoo. From there we rode the trolley car back. (We call them streetcars — the line is the oldest continually-operating public transit system in the world — Ed.)

We also found a very nice night spot called Pat O'Brien's that mixes up something called a Hurricane. In our opinion, after three of these drinks, you couldn't care less if you passed through a real hurricane. After downing twenty ounces of dark rum between us, we certainly would not have noticed a big wind. As you can see by the picture taken of us at O'Brien's (above), we were certainly working hard to make our stay in New Orleans memorable.

New Orleans has charmed our hearts, lightened our pocket-books and done terrible things to our diets. It is now our favorite American city; San Francisco has to take second place. We have already started to save money, not only for the shopping, but for the Duty we will have to pay on what we bring back. This small fact of life was pointed out to us when we returned to Canada and walked into the Customs office to declare our wares.

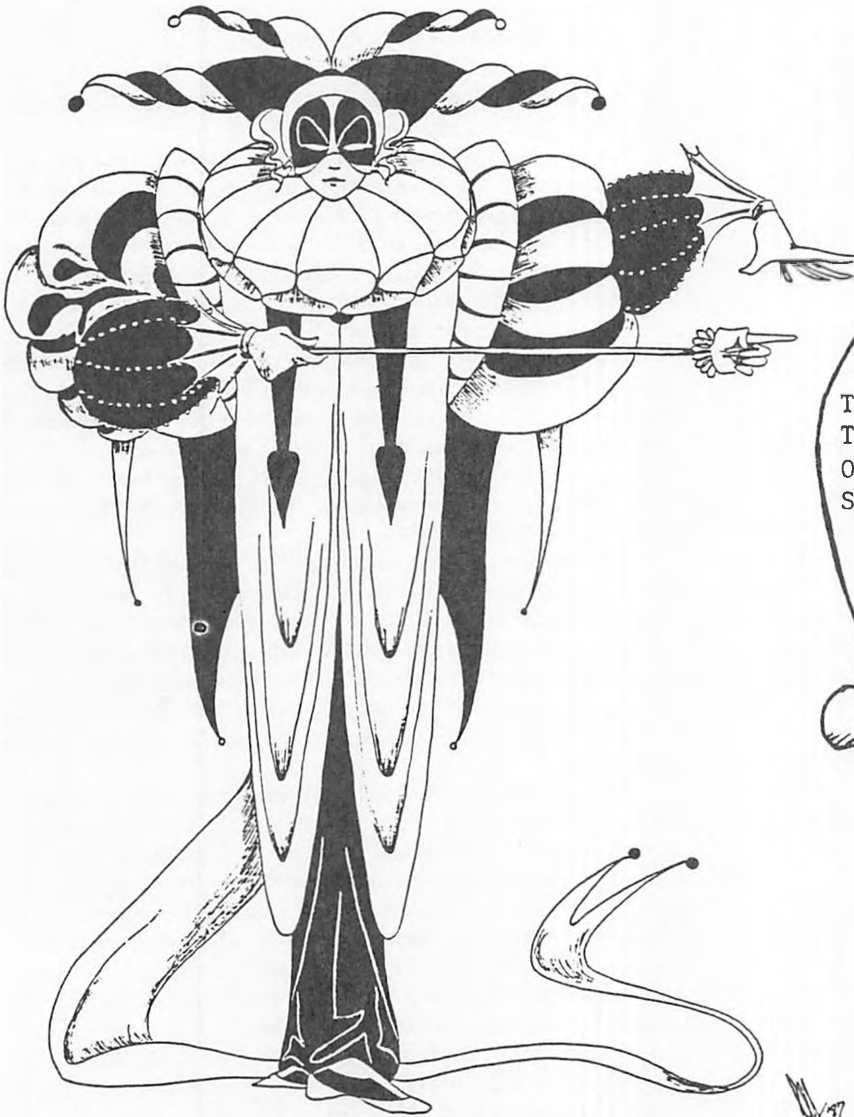
As for the convention next year, and its Art Show, we are getting it together and taking it on the road. If anyone is interested in artists' information, drop us a line at Elizabeth's address above. We are also looking for anyone who is interested in working on our staff. All offers will be given the consideration warranted and if your keeper will let you out, we'll be more than happy to keep an eye on you!

Be seeing you... next September!



BEHIND THE MASQUE

The Newsletter for NOLA CON Costume Events



TO RECEIVE INFORMATION ON
THE NOLA CON MASQUERADE AND
OTHER COSTUME EVENTS,
SEND YOUR NAME AND ADDRESS TO:

DREW SANDERS
13657 RAYEN STREET
ARLETA, CA. 91331

THE NOLA CON MASQUE

by Drew Sanders

Greetings!

I spent the first weekend in October, 1987 in the city of New Orleans, looking over possible sites to place Nolacon II Masque functions. I only hope I can convey to you the excitement I feel about what I have seen, and what I want to do with it all.

Please keep in mind that everything mentioned at this point in time is only preliminary, contingent upon negotiations with the sites involved, and the cooperation of the participants. If you're interested in any or all of this, or want to let me know personally how you feel, write me directly at

Drew Sanders
13567 Rayen
Arleta CA 91331.

This address is also good for getting on the mailing list for the newsletter I'm going to send out to anyone interested with more detail and frequency than is available in the progress reports.

The first site I looked at was the Orpheum Theatre. Located about four blocks from the main convention hotels (on University Place just west of Canal Street — check the map elsewhere in this issue), the Orpheum seats only about 2000 people. It's too small for the main Competition, but as it's such a gorgeous piece of work, full of period charm, and since it was available, I want to use it for something.

I believe I have just the appropriate kind of function for it. We have in fandom a number of people who specialize in **Historical Costuming**. I'm talking about the kind of costume work where the underpinnings are as important as the surface clothing, because the underpinnings determine the shape of the body. Then there are the nuances of the proper choice of fabric, the right accessories, etc.

What I propose is a living display of Historical Costuming, to take place in the Orpheum Theatre on Friday afternoon. This would not be a competition, because I would like to see all of the people qualified to judge such a competition as participants in the display. I think we have here an opportunity for Historical Costumers to show off their specialty to a much larger audience than has ever seen such work before. Also, there is the opportunity here for convention members to see excellent work of a kind perhaps never before encountered, in an intimate facility well suited to this kind of product.

A word about the Orpheum. It is primarily used as an opera house, with the seats evenly divided between an orchestra level and two balconies. All of the seating rises in a steep slope, allowing people in all seats a clear view of the stage. Those who suffer from acrophobia are recommended against sitting in the upper balcony. Would-be participants in the Living Historical Costume Display are warned that they'd be playing to an audience rising vertically before them, rather than to a crowd stretching out away from them for the length of a football field.

The Nolacon II Masque will take place on Saturday, September 3, 1988, at 7 PM.

For the Competition masquerade, I have selected the **New Orleans Municipal Auditorium**, which has the finest facilities I have ever encountered for this type of function.

The Auditorium can open up into an area which would seat about 9000 people, or it can be split up into two separate theatre-style houses, one of which holds about 4600, and other about 2500. I propose to put the Masque into the larger portion of the hall. The floor can seat about 2000, and the balcony holds 2600.

There are more dressing rooms in the place than I could count. Individual dressing rooms can be assigned to each entry, along with a key to that dressing room (available for a nominal deposit), so that entries can keep their work in the Auditorium all Saturday.

There will be a technical rehearsal Saturday morning and afternoon, so that the lighting, sound, and video people can see what the individual requirements are for each entry. Rehearsal times will be assigned in advance.

Presentations will be limited to no more than 60 seconds for each entry of one or two people, with additional time being granted only by approval of the Master of the Masque (that's me) according to the number of people involved.

The Auditorium is about eight blocks away from the convention hotels (see the map again) but arrangements are being made to have a fleet of shuttle buses available all day to ferry people and costumes back and forth.

All registration for the Masque will be done by mail before Nolacon II opens. There will be no registration at the convention itself. Details on how to register will be in the next progress report.

One last note before I close for this progress report. I'd like to put out an early call for **help** now. A show this size just can't happen without lots of assistance. This year, in Brighton, Ann Page was able to assign each entry its personal den mother. I don't know if I'll be able to offer that much support to contestants at Nolacon II, but I'd sure like to, and to be able to do so depends on a lot of you out there **volunteering** to help.



Photo and illo courtesy Chance

Drew Sanders and friend on the gangplank of a Mississippi paddlewheel riverboat!

ART SHOW AUCTIONS — WITH A REGIONAL FLAVOR

by Bob Passovoy

This is a request for vital and important information from fans everywhere.

One of the major problems I've come across in sixteen-odd (very odd, come to think of it) years of auction experience is that of maintaining a high level of entertainment at an auction while at the same time insuring the highest possible quality of auctioneering.

Leaving aside all the nuts-and-bolts backstage support (which must be there or you sink without a trace) what I believe is needed is an audience eager to be entertained (which demonstrates it by entering the action) and most importantly, auctioneers that are the best.

Here comes a parting of the fans, because regional styles differ, as do fans' expectations. Therefore, we're considering setting up the multiple (number to be determined) art auctions as showcases for as many of the regional auctioneering styles as we can accommodate.

Here's where Nolacon II members come in.

I need to know who you think are the best auctioneers you've seen. Who kept you entertained, laughing, and bidding far into night? Where did you see them work? Where do they come from?

Please send me names, addresses if you've got them, and general fannish regions of activity (i.e.: northeast, New York, southeast, deep South, midwest, southwest, west coast, etc.) of your favorite auctioneers. We'll try to give each individual auction its own distinct regional flavor and style.

If you've got comments about the whole idea of regional auctioneers, send those along too!

Write me like a good Chicagoan votes: early and often!

Bob Passovoy
4811 S. Kenwood Ave
Chicago IL 60615.



ACCESS

by Vicky Lynn Webb

Hello, I'm Vicky Lynn Webb, and I'm the local liaison for Access for Nolacon II. Sam Jeude asked me to do this p.r.'s Access spot, and, rather than repeat what she's already said, I'll try to add to it.

This issue of *Catch a Doubloon* contains the Access Questionnaire. It has three major sections: **Handicapped Access**, **Volunteers/Gophers**, and **Medical**. Taking the last section first, the information from it will be put onto the back of your badge (unless you request otherwise). This is the first place we will look in the event of an emergency where you are unable to communicate with us! Please carefully consider taking advantage of this section.

The second section, **Volunteers/Gophers**, is also important because we can't do this alone. As Sam said in the first p.r., we need "strong bodies, sharp minds, and cheerful dispositions" and the more we have, the easier it will be on everyone and the more fun (and believe me, we do have FUN!). We also try very hard to make sure that no one misses any part of the con that they want to see; often, it's possible to arrange things so that work and pleasure overlap (how would you like to get work credit for escorting someone to the Masque or making new friends?).

The **Handicapped Access** section comes in a number of parts: Special Publications, Equipment, American Sign Language (ASL), Special Seating, and Miscellaneous. These cover most of the situations that experience has taught us to expect, but we realize that there's always something new waiting to pop out and surprise us. So ... please look this section over carefully, and if you have any questions, comments, suggestions, etc., let us know.

We have checked out the hotels for accessibility; ask us for details. If you need equipment, do you need something not listed or a special size? We are arranging equipment rentals based on the response from this questionnaire (and our budget); if we don't know your needs in advance, we may not be able to supply them or you may have to pay for them (above and beyond the refundable deposit).

We are dedicated to removing the barriers that have prevented many from attending or enjoying SF conventions. And we'll do everything we can to comply with reasonable requests for assistance. Let us know what we can do for you by returning the completed questionnaire or by writing to:

Nolacon II Access
Samantha b Jeude
P.O. Box 308
Lebanon GA 30146-0308



BSI COMICS

5039 FAIRFIELD
METAIRIE, LA 70006
889-2665

New Orleans
Oldest Comics Dealer

We Buy Collections

EDITORIAL

First we have thanks to offer — thanks to the good folk of both **Brighton** and **Phoenix** for being such splendid hosts during the 1987 worldcon and NASFiC. The Chairman of **Nolacon II**, John Guidry, joined by Justin and Annie Winston, enjoyed a terrific trip to the United Kingdom for **Conspiracy '87**, and reports high good will towards their successor as worldcon. Likewise, those of us who went to Phoenix for NASFiC were treated royally, and we hope to return the favor to all of fandom at **Nolacon II**.

We're working hard on it. Several new staffers have joined the **Nolacon II** krewe (that's the Mardi Gras spelling). Our Hotel Liaison will be **Ken Hafer**, a lifelong member of New Orleans fandom. Appropriately enough, Ken did the fine artwork for this issue's hotel section. Signing on as Technical Services Director is **Jim Mule**, whose **Vul-con**, an annual event here for some 14 years, is New Orleans' longest-running fannish endeavor. **Hollie Domiano** is our new Director of Press Relations, handling news releases prior to **Nolacon II** and the press room during the convention itself. You'll be hearing from Susan and **Jim Satterfield** early next year, for they'll be handling our Hugo Awards balloting. **Debbie Hogkinson**, backed by **Gay Miller-Corrick**, has taken on the vital role of Green Room Coordinator. **Marla Baer-Peckham** will be working for Debbie as Extended Services Manager. **Pat Vermeire** will be handling Costume Programming.

Some requests: first of all, **Nolacon II** needs you! Volunteer! Send a self-addressed stamped envelope to 921 Canal St. #831, New Orleans, La. 70112, stating your wish to help. We'll have a form back to you soonest! Secondly, if you've taken photographs of the **Nolacon II** bid and con krewe at work or play, we'd be very interested in obtaining prints. (Thank you, **Ken Yamaoka**, for sending along your photos from Brighton!) We especially crave pictures taken in our party suite at **Con-Federation** last year. If you snapped those fabulous scenes, please get in touch ... those are memories that we don't want to lose, and that we may want to publish!

Plus, we are very interested in finding out if **Seacon**, the 1961 worldcon in Seattle, had a toastmaster. Please inform us if you know.

Finally, our thanks to **Suzanne Robinson** and **Sandie Hollingshead** of **The Team, Eh?!**, our Art Show experts, and to **Drew Sanders**, Master of Our Masque, for making trips to the "Big Easy" to look things over for themselves. We hope they were as pleased by our town and our facilities as we were with them. From their articles in this issue, they certainly seem to be!

Nolacon II will be with us in less than a year. Are you as happily anxious as we are?

HUGO NEWS

Susan and **Jim Satterfield** have signed on to coordinate the Hugo Awards for **Nolacon II**. You'll be receiving your nominating ballot early next spring, and we encourage every member of **Worldcon '88** to read ... watch ... think about his or her nominations. The Hugo is science fiction's greatest honor, and these will be extraordinarily beautiful *Hugo Awards*.

While the basic design of the *Hugo* rocket is set by the World Science Fiction Society Constitution, each worldcon may create its own base for the trophy. The base for the **Nolacon Hugo** is being sculpted by **Ned Dameron**, a long-time Orleanian and professional artist whose cover paintings have graced **Don Grant Publications** for years, and whose illustrations are prominently featured in **Anne McCaffrey's The Coelura**. Ned's first love was sculpture; **Nolacon II** is delighted to give his magnificent work such exposure. What will the finished design look like? Ah, that's our secret ... until the Hugo ceremonies at **Nolacon II**.

Speaking of **Hugos**, cogratulations are due to **Brad Foster**, winner of the Best Fan Artist award at **ConSpiracy**. Brad did a fabulous illo for the New Orleans in '88 worldcon bid, as did his predecessor as Hugo winner, **joan hanke-woods**. A great honor for great work, well-deserved.



OUT OF THE CLOSET AND INTO THE UNIVERSE



The Gaylactic Network is an international organization for gay people and their friends who are interested in science fiction and fantasy. Its purpose is to help gay fans contact and develop friendships with each other and to help them start local gay fandom groups in their regions of the world.

Membership in the Network is open to anyone anywhere who supports its goals. Members will receive a quarterly newsletter and a directory listing members' names, addresses, and interests. All Network publications are in English and all communications to the Network should be in English.

For more information, please write:

GAYLACTIC NETWORK
P.O. BOX 1051, BACK BAY ANNEX
BOSTON, MASSACHUSETTS
UNITED STATES

02117

BACK TO THE FUTURE:

NOLAACON "I"



Bulletin # 2

The 1951 World Science Fiction Convention was not free of controversy. Prior to its opening Chairman Harry B. Moore found himself at the Center of a cacophony of criticism. The problem dealt with one of his rumored program items: a panel on Dianetics, the "new science" then making a hubbub in science fiction fandom. This second of Moore's progress reports for the original Nolacon reflects his exasperation with those who kept his ear bent on the subject.

The publication also does what it was supposed to do, and reports real progress. A Guest of Honor has been secured: Fritz Leiber. A promise for a program book

cover has been elicited from the great Hannes Bok. Frank R. Paul paintings have arrived for the Art Show. And the list of fans coming down for the 9th worldcon just keeps on growing.

What happened? Did Dianetics get its day at the worldcon? Was Fritz Leiber's skit too "goshwowboyoboy" for the New Orleans press?

You tell us! Were you at the Nolacon? Do you have reports, photos, tapes, memories of the goings-on you'd care to share?

Let Nolacon's successor hear from you.

Moore's rather presumptuous pleas that his Guest of Honor and everybody else at Nolacon behave in a dignified fashion reflects fandom's eternal concern with public perception. Despite this, the convention earned excellent and fair coverage in the local press, thanks in great part to States-Item reporter and future professional SFer Daniel F. Galouye.



Sorry to talk so poor-mouth, but we are spending money that we don't have yet. And that rent will take about all the money that we DO have now. We are going ahead with it, but we sure could use the money from the auction NOW. And what with the following.....

Before the Nolacon, Chicon, and Convention toward Baseball, because they scheduled games? Did fans write in and say they were coming only if the ACCENT were taken off THIS INTEREST INDIVIDUAL TO ORGANIZED FAITH? Did Miltie Rothman get writeups in fan magazines shouting AUX BARRICADES because he had a nuclear physicist as Goff (who talked on this subject too, of interest to fans.) Did they say that the Philcon was to be over-half devoted to Rocket-Ballistics because Willy Ley was up for a talk on it? Lucky--or far-sighted--Ned McKeeown. He didn't preview that Atomic Theory movie shown at the Torcon.

The Norwegian didn't preview their session on Dianetics. It was one of the two with the highest attendance. But it did not reveal much practical information. We were asked if we wouldn't try to do better next year. And so we have. But apparently it was a mistake to say so, for.....

Now we have a dozen or so guys on record that they simply WILL NOT PLAY unless we agree to play it all their way. We can't have even one 1-2-hour seminar or they will stay away, and obviously they are not content to save their convention money, they must ruin the convention by convincing everyone else of their untruths and spoil it for them too. They started out by telling us that we didn't know what we were talking about, and that D was non-referent. This caused us to put the 2-page addendum to the first bulletin. Then they really had a field day saying that this PROVED we were out to make this the "First Dianetic". One famine even went so far as to print that the Nolacon was to be over-half devoted to Dianetics.

So, be it categorically stated now that the Nolacon NEVER WAS slated to have more than 2 hours on Dianetics, or any other subject, except the auction. (Maybe the movies will add up to more.)

But now here we are with a lot of free-and-uncalled-for publicity--negative publicity. Naturally, it has us worried. These boys are having their good clean fun, but it is we who will have to pay for many implicit they may produce. No, with the amounts on hand at present it does not seem possible that such could occur, unless we get extravagant. But we WANT THOSE MOVIES--and the rental runs pretty high on some of them--unless, as mention, you can fix.....?

Why don't we simply agree to the deletion of the controversial item? Firstly, of course, because it IS controversial, and we have no indication whatever that the AGENTS boys are in the majority except that they say they are--that is, no indication at all. And secondly, because this is all nonsense. WE CAN'T DELETE IT. The conventions just don't work that way. Even if we WERE SURE that the majority of fandom, or the majority Nolacon membership wanted no session, we have no assurance that the convention assembly will be made up of this majority. You who COME are the convention, and are the ones who are to be pleased. Neither the committee nor any number of shorehand-kibitzers can prevent you from having anything you wish, that's obtainable, or force you to have anything that you don't want.

So please pass the word around, huh? And in view of the above, may we not most earnestly request you to get after a friend or five to get in their Nolacon dollars? We need 'em---to make it the most fabulous convention ever. We want to.

Continuing the list of coming attractions, Sam Moskowitz, Authority on the subject, has consented to giving a talk dovetailing with EEEVans's on the history of science fiction fandom. Sam has furthermore released us

The Word - (June 30) To Date

Well, with the acquisition of a Guest of Honor, the Nolacon program settles down sufficiently for this second bulletin to appear. And at a sufficiently late date, too, you may remark.

To which we reply that we most heartily wish that YOU were arranging this convention. Additionally, or instead---just SOMEONE ELSE.

The Guest of Honor is Fritz Leiber. Besides being author of such acknowledged science fiction classics as Gather, Darkness, and Dastiny Times Three, he is Associate Editor of Science Digest. He has informed us that the title of his talk is to be "The Jet-Propelled Apocalypse."

In addition to this, Mr. Leiber is on record as intending to write us a skit. We have asked him not to make it too goshwowboyoboy, Bob Tucker informs us that there will be a heavy representation of the Fress. And you all know how much they love to photograph beams and other 'unnatural' things and tell the world that THIS IS SCIENCE FICTION FANDOM! So, however much he loves to sport around his Duck Rogers costume with blaster, he has agreed just THIS TIME to put it off.

Would you, too, please? If the non-fan publishing field get a raised opinion of the sci-reading field, there will be better reading for all, fewer pot-boilers and more demand for GOOD science fiction. More and better authors will turn to the genre, and everyone will benefit. 10q

Other things and people that have come in since the first bulletin: Walt Sheldon has been called-up, is now in Korea, or thereabouts. So subtract one Sheldon from expectations. But add one Jack Williamson. One of the oldest science fiction authors in point of continuing authorship, he is still one of the best.

Two cover-pix for the Program-Booklet expected: one by N. C. France Pat Davis---she has done pro work, eg for Williamson's The Equalizer, in ASF---and one by Hannes Lok. May they vie with each other.

OOops---this should have been first---THERE WILL BE NO HYDRACON in the foreseeable future. Not this year, maybe never again. This is from Rudith Merwil Pohl. Incidentally, she and her husband Fred Pohl will be here too.

If we have our way this will be pretty much of a moviecon. EOWS owns a 16mm projector with speaker. Under such circumstances we naturally solicit you to one and all bring all your films of a stiff, or weird nature. Help us make it so. And---we know that it is a terrific financial risk, but people keep telling us that everyone leaps to the rescue of a con on the rocks---so we'll probably go ahead with our oldest ambition for (NR con). To have a full-length, grade-A picture each day, a science fiction one, a pure fantasy, and a weird. Negotiations are now going forward. We will very much appreciate any efforts, pull, abilities, pull, know-how, help, pull, cut rates, etc. that you and you can bring about, because that half is going to cost us \$225.00.



In case anyone is wondering, Nolacon II plans no activities whatsoever on Dianetics.

Obit:

- 10. Wm. J. Griffith, Route 2, Box 249, Aurora, Oregon.
- 15. Anna Sinclair, care Stan Woolston, now ~~where~~, Congratulatory.
- 15. Pvt. Emile E. Greenleaf Jr., US 5401443, Co. F, 85th Infantry Regiment, 10th Infantry Division, Fort Riley, Kansas.
- 19. George C. Smith, GS-09 35th Ave., Jackson Heights, New York, N.Y.
- 20. Mrs. George O. Smith, same.
- 22. Sidney Pat' Mailoux, 5518 Vingate, New Orleans, La.
- 23. George W. Earley, 4807 Montgomery Lane, Bethesda 14, Maryland.
- 23. Lyell Crane, RM. 417C, London WC-1, England.
- 120. John H. Trapp, 1500-B Elm St., Amarillo, Texas.
- 125. Edward L. Bryan-Turner, care Y.M.C.A., Little Rock, Arkansas.

Additions Since Last Bulletin

Lost Cpl. George N. Raybin, somewhere in Fort Sill, Okla.

- 130. James V. Tourasi, 137-03 32nd Ave., Flushing, New York.
- 131. Sam Humphreys, 1404 Washington St., Eugene, Oregon.
- 132. Gladys Humphreys, same.
- 133. Louis N. Crimmins, 2339 D'Abadie St., New Orleans, La.
- 134. J.P. Guinon, PO Box 214, Little Rock, Arkansas.
- 135. Paul Anderson, 3423 Aldrich Ave. N., Minneapolis 12, Minnesota.
- 136. Pat Davis, RFD 1, Seven Springs, N.C.
- 137. Boris Weinstein, 218 Prospect St., Shreveport, La.
- 138. Sgt. Arthur A. McCourt, EA 38731648, care Mrs. E. H. Barnes, 520 West 8th Ave., Pine Bluff, Arkansas.
- 139. Cpl. George P. Raybin, see above.
- 140. Harold Friedrichs, 3033 Canal St., New Orleans, La.
- 141. John T. Brown Jr., 5143 Morse Ave., Skokie, Illinois.
- 142. Hal Annas, Box 131, Suffolk, Virginia.
- 143. Addie Huddleston, 1820 Logan St., Cincinnati 10, Ohio.
- 144. Nan Redcorn, 127 Kentucky Ave., South Clinton, Tennessee.
- 145. Joe Martino, RD 5, Warren, Ohio.
- 146. Henry W. Durwell Jr., 459 Sterling St., NE, Atlanta, Ga.
- 147. Bruce Ronald, 2015 South E St., Richmond, Indiana.
- 148. Charles J. Roubique, 5304 Wickfield Dr., New Orleans, La.
- 149. Paul D. Cox, 3401 6th Ave., Columbus, Ga.
- 150. Erle M. Korshak, 5525 Blackstone, Chicago, Ill.
- 151. Stanley C. Skirvin, 389 King Ave., Columbus 1, Ohio.
- 152. William P. Moore, 416 E. Beech St., Little Rock, Ark.
- 153. Capt. Kenneth F. Slater, 13 Sp. RFC, BAOR 15, care GPO, England.
- 154. C.L. Murray, Box 394, Jal, New Mexico.
- 155. Ken Scale, 115 East Mosholu Pkwy., Bronx 67, N.Y.
- 156. Sgt. Van H. Splawn, RA 17229538, Post Finance Office, Fort Benning, Georgia.
- 157. David A. MacInnes, Camp Robinson, BSA, North Longyard Road, Westfield, Massachusetts.
- 158. Patricia MacInnes, same.
- 159. Goldberg Soda MacInnes, same.
- 160. Nip MacInnes
- 161. Stanley E. Crouch, Holly Circle, Sterling, Va.
- 162. Bill Berger, 912 East 140th St., Cleveland 10, Ohio.
- 163. Chad Oliver, 1706 Fucces, Austin, Texas.
- 164. Y. Martin Carlson, 1028 3rd Avenue South, Moorhead, Minnesota.
- 165. Margaret E. Morris, PO Box 247, Henderson, Tennessee.
- 166. Evan H. Appelman, 195 Laurel Ave., Highland Park, Illinois.
- 167. Judith Merrill Pohl, 386 West Front St., Red Bank, New Jersey.



1951 was a long time ago. Poul Anderson still lived in Minnesota.



- 168. Fred Pohl, 386 West Front St., Red Bank, New Jersey.
- 159. Mrs. Philip Gerding, Box 484, Roseville, Illinois.
- 170. Suzanne Montgomery, sec 87.
- 171. Don McNeal, Greenville AFB, Greenville, Mississippi.
- 172. Arlene McNeal, same.
- 173. Raymond A. Palmer, 1144 Ashland Ave., Evanston, Illinois
- 174. Emrys Evans, Box 277, Mountain Home, Idaho.
- 175. Ian Maccauley, 57 East Park Lane, Atlanta, Georgia.
- 176. Jack P. O'Brien, USS Hank (DD-702) care Fleet Postoffice, N.Y., N.Y.
- 177. Sam J. Basham Jr., 500 Gibson Avenue, Lexington 17, Kentucky.
- 177. A. Everett Wince, care John Nagle, 182 State St., Springfield, Mass.
- 179. Marion Bloch, sec 88.
- 180. Paul L. Work, 2517 South Carnet St., Philadelphia 45, Penna.
- 181. Robert W. Chambers, 990 North 10th St., Coos Bay, Oregon.
- 182. Ellen B. Bacham, sec 177
- 183. Rog Phillips Graham, Box 272, Laguna Beach, California.
- 184. Mari Wolf Graham, same.
- 185. Frank M. Robinson, Beverly Shores, Indiana.
- 186. John S. Davis, 931 East Navajo Road, Tucson, Arizona.
- 187. Bill Venable, 610 Park Place, Pittsburgh 9, Penna.
- 188. Zoe Russell, 3516 Beckham Dr., Shreveport, La.
- 189. Ralph Russell, same.
- 190. Fred A. Hatfield, 7620 Abbott Avenue, Miami Beach 41, Florida.
- 191. Ray E. Benn Jr., 1363 North Harding, Indianapolis, Indiana.
- 192. Les Cole, 614 Norvell St., El Cerrito 8, California.
- 193. Les Cole, same.
- 194. Mark Reinsberg, 1363 Pratt Blvd., Chicago 26, Illinois.
- 195. George Wetzel, 3103 Woodland Ave., Baltimore 15, Md.
- 196. John C. Cuvillier, 5357 Chestnut St., New Orleans, La.



Note the entry "Aluminum for Cards". Nolaicon gave out inscribed metal membership cards, one of the minor uniquenesses of the most unique worldcon.

=====

Treasurer's Report

Income:	Expenses:
Balance Brought Forward \$ 163.96	Paper + Postage \$ 31.09
Membership Dues \$ 59.50	Aluminum for Cards \$ 1.33
Contribution From Norwescon \$ 28.93	
Ads \$ 22.00	
	\$ 374.89
	\$ 32.92
Balance \$ 241.47	

=====

LAST THOES

Bob Tucker wants to get in on the fan-history act. The aforementioned club's commendum will probably be mainly serious. If Tucker's is, it will be astounding--in fact it will be super-science. He started off with mention of one hour, but has been encouraged by MEM'. It's an hour and a half, now. This tour-de-force is to be accompanied by slides, etc.

Bob Fernon, 104 Mountain View Dr., Dalton, Ga., offers accommodations for 2 and traveling thru. Free. George Wetzel, BSA, also wants visitors in Baltimore, traveling thru.

and in conclusion if you hate Dianetics so much, the way to get it out of the program is by action from the floor. There is always a fan-business session... for just that sort of thing.



MAGICON



ORLANDO IN '92

Orlando! Where **Magic** Meets **TECHNOLOGY**

. . . and where (with your help) Science, Fantasy, and Fun will come together in 1992 at the Fiftieth World Science Fiction Convention. There's no better place for fans to remember the past, enjoy the present, and celebrate the future.

1992 is the 500th anniversary of the start of humanity's first Age of Exploration, when daring, ambitious men sought new worlds across the sea. Florida was one of the first that they found.

Today, Florida is at the center of the second Age of Exploration - home base of America's space program, a leader in scientific research, and the place where people come to be enchanted and informed.

Orlando is bidding for the 1992 Worldcon, because we want to share all this with our friends. Nowhere else can you witness a space shuttle launch, tour the future at EPCOT, or restore your youth in the Magic Kingdom. Furthermore, Orlando offers exceptional facilities for holding a Worldcon. When expansion is complete in 1988, the Orange County Convention & Civic Center will provide 388,000 square feet of meeting and exhibit space, enough to hold two Worldcons simultaneously. With few exceptions, all of these facilities are located on a single floor - no need to worry about stairs, escalators, or elevators.

For the convenience of dealers and artists, the Center has 55 loading docks, superb security, and state-of-the-art lighting in all exhibit areas. What's more, unlike so many convention centers, this one isn't just a big, empty box. We think that con-goers will find its landscaping, architecture, and interior design as impressive as its size.

Directly across the street from the Convention Center is **MagiCon's** flagship hotel, the Peabody Orlando at Plaza International. The Peabody features 833 sleeping rooms, 60 suites, 58,000 square feet of meeting and function space, five restaurants, (ranging from the art-deco Bee-Line Diner to the elegant Dux), a double-Olympic sized swimming pool, a professionally-run day-care center, and a corps of trained mallard ducks.

Within one mile of the Convention Center are 12 more hotels, with a total of 4,000 sleeping rooms. As well as a block of 750 rooms at the Peabody, we are blocking 700 rooms at the Orlando Marriott, 600 rooms at the Quality Inn, and 150 suites at the Park Suite Hotel. In addition to these, we are negotiating further room blocks at other nearby hotels. Since Labor Day weekend is off-season in Orlando, we anticipate that our room rates will compare favorably with those at recent Worldcons.

Of course, a great Worldcon needs more than great facilities. Also essential is a capable, dedicated con committee. We're confident that we have that, too. Our committee members have held top positions in past Worldcons, and founded and chaired major local and regional conventions. We have acquired a wealth of useful experience, and continue to do so. (For example, committee members worked at Conspiracy and at CactusCon, serving in various capacities.) While **MagiCon**, like all other modern Worldcons, will recruit its staff from all over the country, our solid local base gives us the vital foundation for a first-rate con.

Growing Like **MAGIC**

That's what we're doing. We are fast approaching 700 presupporting memberships. T-Shirt sales have sky-rocketed, and we've had to go to a second printing of the first issue of our bidzine. The bid parties we threw at Worldcon and NASFiC were our most successful to date, due in large part to the unbridled enthusiasm of all who attended. Our thanks to those who showed their support.

The **MagiCon** bid is not the only thing that is growing - the entire Orlando area is too. By 1990, Orlando will be host to two motion picture production studios, Walt Disney World Village's new Pleasure Island nighttime entertainment facility, and Typhoon Lagoon, a 50 acre, 50 Million dollar water thrill park. These are in addition to the theme parks that have already made Orlando famous.

Indeed, Orlando IS Magic . . . A city without limits, offering all of Florida's best.

Come, Share The Magic!

Support **MagiCon / Orlando in '92**. Presupporting memberships are \$5.00 (which will be credited towards your Worldcon membership after we win). For this trifling sum, you will receive a **MagiCon** button, a subscription to our bidzine, and a lot of great parties. Presupporters can also buy our sensational 3-color **MagiCon** T-shirt at the discount price of only \$6.50 (\$8.00 to others; please specify size: S, M, L, XL; 100% cotton available in L & XL for \$1.50 extra. Please include \$1.50 for shipping & handling if ordered by mail)

MagiCon / Orlando in '92, P.O. Box 5904, Orlando, Florida 32855

"World Science Fiction Society", "WSFS", "World Science Fiction Convention", "Worldcon", "Science Fiction Achievement Award", "Hugo Award", and "NASFiC" are service marks of the World Science Fiction Society, an unincorporated literary society. "MagiCon" is a service mark of the Florida Association for Nucleation And Conventions, Inc. (FANAC), a non-profit Florida corporation.

"EPCOT", "Disney World", "Magic Kingdom", "Walt Disney World Shopping Village", "Pleasure Island", and "Typhoon Lagoon" are registered trademarks of Walt Disney Productions.

MEMBERSHIPS

by Mary Wismer

2077 Attending ... 739 Supporting. That, so far, is the membership of the 46th World Science Fiction Convention, **Nolacon II**.

Follows a complete and up-to-date listing of everyone who has joined our convention through October 21, 1987. Most worldcons don't reprint lists of their entire membership in their progress reports, but **Nolacon II** has special reasons for doing so.

For one thing, we have shuffled our list and changed some membership numbers. Ignore those in our first p.r.; these are the numbers that count. You should find the same number on your address label on this p.r.'s envelope.

Secondly, we've made corrections to our previous listing, fixing every error brought to our attention since p.r. number 1. We've been diligent and tried hard, but we're bound to have missed something. So: please check both your listing and your label.

You will notice that we have divided the listing into Supporting and Attending categories. (An "AVP" behind your name means you voted at ConFederation; an "ATT" means that you purchased your membership afterwards. Both are full attending memberships.) If you are listed as Supporting and believe you've paid for Attending, write and let us know. Send copies of your **Nolacon** receipts, or your check stubs, and please don't forget to include your membership number. We'll correct the problem.

Please note: if you've converted from Supporting to Attending status very recently, that change may not have made this list. It should be on your mailing label, however, as that is the later record.

If you are presently a Supporting member, and wish to move on to Attending status (and actually show up at **Nolacon II**), please check our membership rates on the inside front cover of this p.r.: you'll learn how to convert there.

If you change your address, contact us at once, or you might miss information you need to have. **Special note:** we have received a number of blank change of address cards. Need we add that these do little good at best? And, if you have a question about your membership or want a verification, please send a self-addressed stamped envelope for faster service.

We are publishing this list for your convenience — to catch mistakes. Don't hesitate to bring errors to our attention. We want everything in order — when you appear at the registration table at **Nolacon II**.



Nancy Mayberry

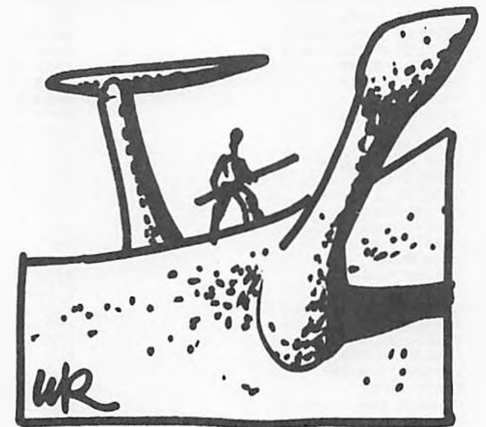
ATTENDING

ABARTIS CEZAIRIJA	3042 ATT
ABEND GAIL	1132 AUP
ABRAMOVITZ SUE WHO	1133 AUP
ACKERMAN EVE	135 AUP
ADAMS BRUCE	2897 AUP
ADAMS DONNA	3340 ATT
ADAMS FRANK	1136 AUP
ADAMS, JR. DENVER	224 AUP
ADLEMAN ALICE	2442 ATT
AFFLECK-ASCH-LOWE WILLIAM C.	1138 AUP
AGIN GARY	1139 AUP
AINES STEVEN	1140 AUP
ALBERTSON RICK	858 AUP
ALEXANDAR ISKANDAR	1142 AUP
ALEXANDAR WENDY	1143 AUP
ALM, JR. HARRY	98 AUP
ALM MARILYN	97 ATT
ALMAND DOUG	2410 ATT
ALMAND PAMELA	2409 ATT
ALSCHULER MATTHEW	983 AUP
ALVORD J. CLINTON	603 AUP
ANCHORS BILL	2940 ATT
ANCHORS GLORIA	2941 ATT
ANDERSON BARBARA	3170 ATT
ANDERSON CLAIRE	1154 ATT
ANDERSON DARNELL	3060 ATT
ANDERSON DAVE	1151 ATT
ANDERSON DAVID	3061 ATT
ANDERSON ELIZABETH	1152 AUP
ANDERSON GARY	2829 AUP
ANDERSON GARY	2868 AUP
ANDERSON LYNN	1153 AUP
ANDERSON SHEILA	2944 ATT
ANDO A.A.	1149 AUP
ANDREW DOUG	1155 AUP
ANDREW STEFAN	2697 ATT
ANDREWS JOHN	1159 AUP
ANDRUSCHAK HARRY	22 AUP
ANSELM JO	1161 AUP
ANTHONY PAULA-ANN	2456 ATT
ARANDOVITZ DAVID	2731 ATT
ARIAS RICHARD	3105 ATT
ARIAS ROSE	2463 ATT
ARMY PHILIP	2631 ATT
ARDNOVITZ NANCY	2732 ATT
ARDNISON LYNNE	1164 ATT
ARDNISON MARK	1165 ATT
ARRIVI MANNY VISEPO	3004 ATT
ASPLER JOSEPH	977 AUP
ASSISTANT LAVENDER WINE	3013 AUP

ATHERTON NANCY	351 AUP
ATKINSON THOMAS	1166 AUP
ATWOOD BONNIE	2530 ATT
ATWOOD TED	7 ATT
AUCDIN ANN	2687 ATT
AUCDIN MICHAEL	1168 AUP
AUERBACH ROY	2669 ATT
AUFORD MELISSA	2477 ATT
AUSTIN ELIZABETH	2535 ATT
AVERY BILL	2460 ATT
AXLER DAVID	756 AUP
BAACK DARLA	3229 ATT
BAER-PECKHAM DAVID	1254 AUP
BAER-PECKHAM MARLA	1255 AUP
BAIGENT DREW	1172 AUP
BAILEY KEITH	3050 ATT
BAILEY MARK	1174 AUP
BAILEY-MATTHEWS ALEXANDER IVAN	1175 AUP
BAILY KEVIN	1079 AUP
BAKER IRWIN	2632 ATT
BAKER LESLIE	2566 ATT
BAKER STANLEY	2567 ATT
BALAZS FRANK	1176 AUP
BALDWIN JOHN	1177 ATT
BALTER GERRI	1178 AUP
BANBROUGH BRIAN	1179 AUP
BANBURY MICHAEL	2584 ATT
BANGS MARI	1180 AUP

ATTENDING

BANTZ BRUCE	3341 ATT	BROWN D.J.	1247 AUP	CHU ALINA	682 AUP
BANTZ JONNI	3342 ATT	BROWN DENICE	2716 ATT	CLAREMONT CHRISTOPHER	2470 ATT
BARA DAVID	2711 ATT	BROWN GUEST OF JOEL	2513 ATT	CLARK ALAN	979 AUP
BARBERA GEORGE	3254 ATT	BROWN JOEL	2514 ATT	CLARK BEV	1306 AUP
BARD BARRY	883 AUP	BROWN MICHAEL	2458 ATT	CLARK CINDY	3212 AUP
BARNARD JEAN LYNN	1182 AUP	BROWN PHYLLIS	1250 AUP	CLARK COURTNEY	3103 ATT
BARNES PAMELA	3138 ATT	BROWN RICHARD	2438 ATT	CLARK IVAN	340 AUP
BARNHARD GARY	1183 AUP	BROWN SCOTT	3347 ATT	CLARK KAREN	3213 AUP
BARNHARD JUDY	1184 AUP	BROWN STEVE	851 AUP	CLARK PAMELA	277 AUP
BARR GREGORY	2485 ATT	BRUNDIGE SUE	995 AUP	CLARK SUSAN	336 AUP
BARRETT BRYAN	1185 AUP	BRUNS NANCY	3113 ATT	CLAYPOOL GAVIN	840 AUP
BARRETT GREG	623 AUP	BRUNS STAN	3112 ATT	CLEARY JOHN	855 AUP
BARRY JEREMY	709 AUP	BRYANT EDWARD	1251 AUP	CLIFFORD ROBERT	1312 ATT
BARTLEY DOUG	3149 ATT	BUADITTI KEITH	1101 AUP	CLOUGH BRENDA	3054 ATT
BARTON ADRIAN	215 AUP	BUCHANAN PENNY	3250 ATT	CLOUGH LAWRENCE	3055 ATT
BASSETT JIM	2441 ATT	BUNGE JUDY	352 AUP	COADY MARTHA	1314 AUP
BATEMAN GRAHAM	2750 ATT	BUNGE LARRY	346 AUP	COCHERELL CATHLEEN	3102 ATT
BATES MIKE	2539 ATT	BURDEN-HYDE D.L.	2765 ATT	COCHRAN JOE	1315 AUP
BATH DAVID	2722 ATT	BURDICK DEBBIE	863 AUP	COCHRAN LINDA	1316 AUP
BATY KURT	885 AUP	BURDICK MARK	862 AUP	COOER DALVIN	34 AUP
BAXTER DAVID ROY	1191 AUP	BURGER JUDITH	767 AUP	COHEN BETH	1318 AUP
BEAL ROBIN	347 AUP	BURGESS BRIAN	2994 ATT	COHEN JEREMY	1320 AUP
BEAM RAY	1192 AUP	BURKERT THOMAS	2741 ATT	COHEN LYNN	1321 AUP
BEASLEY SALLY	290 AUP	BURLEY BRIAN	462 AUP	COHEN SANDY	1323 AUP
BEATHMAN HOWARD	2916 AUP	BURNETT CREG	3126 ATT	COHEN SUSAN	3152 ATT
BEATTY ALLAN	661 AUP	BURNETT JAMES	355 AUP	COKER NANCY	3003 ATT
BECK MARTHA	1194 AUP	BURNSIDE T.	49 AUP	COLE ANITA	2564 ATT
BECKLY LAUREL	2963 AUP	BUSH BUD	2510 ATT	COLE LARRY	1325 AUP
BEERS JINX	1195 AUP	BUSH YVONNE	2509 ATT	COLE MARY	122 AUP
BEETEM ROSE	3316 ATT	BUSHYAGER LINDA	643 AUP	COLE STEVE	246 AUP
BEHRENDSEN TIM	2972 AUP	BUSHYAGER RONALD	1260 AUP	COLE SUSAN	247 AUP
BEHRNS LYNN	1197 AUP	BUTLER BRUCE	3029 ATT	COLEMAN ART	2904 AUP
BEIRNE MICHAEL	343 AUP	BUTLER CHARLES	1261 AUP	COLEMAN HOWARD	1327 AUP
BELTON JOANNE	993 AUP	BUTLER LIN	1950 AUP	COLEMAN JANET	1328 AUP
BEMIS JUDITH	1199 AUP	BUTLER PAT	3030 ATT	COLLINSON JACK	2695 ATT
BENDER JAN	949 AUP	BUTLER RON	1262 AUP	COMPANIK CHRISTOPHER	2427 ATT
BENNEDESEN ANNE	1108 AUP	BUTTERFIELD ADRIAN	3235 ATT	CONDON JASON	3182 ATT
BENNETT J	742 AUP	BYERS RICHARD	485 AUP	CONDON KATHRYN	3183 ATT
BENNETT LINDA	741 AUP	BYNUM FRANK	2795 ATT	CONGDON NELL	96 AUP
BENNETT STEPHANIE	2934 ATT	BYRD BRENT	1264 AUP	CONNELL BYRON	970 AUP
BENSON ROBERT	1201 AUP	CADY CHARLES EARL	1266 AUP	CONNELL BYRON	971 AUP
BENTLEY ALICE	81 AUP	CADY KATRINE	3287 ATT	CONNELL TINA	972 AUP
BENTLEY MICHAEL BRIAN	84 AUP	CADY TASHA	1267 AUP	CONNER DEBRA	3119 ATT
BERNSON MIKE	1205 AUP	CAGLE THOMAS	2757 ATT	COOGLER CAROLYN	869 AUP
BERNSON MYRA	1853 AUP	CAGWIN THOMAS	459 AUP	COOK BILL	856 AUP
BERNSTEIN MARK	2699 ATT	CAHILL MARYLYNN	3145 ATT	COOK GLEN	77 AUP
BEVAN JENNIFER	120 AUP	CAHILL TOM	3166 ATT	COOK PAULA	2751 ATT
BEZBAK PETER	2982 AUP	CAIN FRANKLIN	2521 ATT	COOK PENNY	861 AUP
BIELAK PETER	3337 ATT	CAMP HOWARD	531 AUP	COOK ROBERT	2583 ATT
BIGELOW BETTY	2639 ATT	CAMPBELL JAMES MARK	3140 ATT	COOK SANDRA	1000 AUP
BIGELOW DAVID	2638 ATT	CAMPBELL JOHN	2538 ATT	COOK SEAN	2752 ATT
BILLING DEBRA	3343 ATT	CAMPBELL TERESA	3139 ATT	COOPER MICHAEL	3371 ATT
BINDAS DONALD	3261 ATT	CAMPNEY WALTER	3084 ATT	COOPER PAM	2945 ATT
BISBERG MICHAEL	3163 ATT	CANNODY TANZEN	1269 AUP	COPELAND JEFFREY	835 AUP
BISENIEKS DAINIS	1210 AUP	CANTOR DAVID	785 AUP	CORDRAY KENT	1099 AUP
BISHOP BILL	3320 ATT	CANTRELL MARK	2892 AUP	CORDRAY OTTO	730 AUP
BISHOP JAMES DANIEL	1212 AUP	CARDENVAL RUSSELL	111 AUP	CORDSMEYER PAUL	895 AUP
BISHOP JUDY	577 AUP	CARL LILLIAN	2705 ATT	CORDTS KATE	3127 ATT
BLACIMAN MARK	600 AUP	CARLBERG STEVEN	2571 ATT	CORNELL KELLY	3249 ATT
BLAIR LEWIS A. (PETE)	1213 AUP	CARLETON GORDON	1085 AUP	CORRICK JAMES	1342 AUP
BLAKE EDWARD	2665 ATT	CARLSON CATHY	1279 AUP	CORRIGAN JERRY	23 AUP
BLOOD ELAINE	1217 AUP	CARLSON CHARLES	853 AUP	CORZINE SHELBY	483 AUP
BLOOD KENT	1218 AUP	CARLSON DEBARA	1280 AUP	COUNSIL WENDY	2700 ATT
BLOODQUIST JANE	2413 ATT	CARLSON ROSE	2675 ATT	COUVILLION MIKE	2821 ATT
BLYTHE DOUG	1220 AUP	CARLSON VIUVIAN	2775 ATT	COWAN ANDY	1343 AUP
BOETTCHER GLEN	243 AUP	CARMICHAEL JOHN	1282 AUP	COWAN MARY	1344 AUP
BOOSTAD JAN	76 AUP	CARRINGTON GRANT	997 AUP	CRAWSTON CAROL	2512 ATT
BOICE MELISSA	3282 ATT	CARRON BEN	516 AUP	CRAWFORD MARY	1348 AUP
BOLGOE LINDA	517 AUP	CARRON CATHERINE	1078 AUP	CRIGHTON DOUGLAS	999 AUP
BOLGOE RICHARD	458 AUP	CARRON JOANNE	1077 AUP	CRISCI DONNA	1350 AUP
BOMAR FRED	3083 ATT	CARTER CRAIG WILLIAM	2949 ATT	CRITTENDEN, JR. ROBERT	2857 AUP
BONE VICKI	854 AUP	CARTER SHAWN	1287 AUP	CRONAU GREG	1352 AUP
BONSER ALEXEA	3129 ATT	CARTER WILLIAM	3010 ATT	CROSS BARBARA	299 AUP
BOOK ANN	3355 ATT	CASALE JEANNE	1076 AUP	CROSS RICHARD	1354 AUP
BOOKER D.	3038 ATT	CASSANO RENATO	2933 AUP	CROSSLAND SHIRLEY	2831 AUP
BORNSTEIN EDWARD	1223 AUP	CASSANO RENITA	708 AUP	CROSSON JERRY	2524 ATT
BOSKY BERNADETTE	21 AUP	CAVIN BILL	167 AUP	CRUICKSHANK JANET	82 AUP
BOTWIN MITCHELL	1227 AUP	CAVITT ANN	99 AUP	CRUISE RUTH	3022 ATT
BOUDREAUX RAYMOND	95 AUP	CAVITT BILL	849 AUP	CRUISE WILLIAM	3023 ATT
BOUSKA AMY	1229 AUP	CELKO JOE	258 AUP	CRUSOE JON	989 AUP
BOVA BARBARA	2871 AUP	CHABOT MIKE	349 AUP	CRUZ MADELINE	1001 AUP
BOVA BEN	2872 AUP	CHALKER JACK	259 AUP	CUCCI NANCY	3089 ATT
BOWERS BILL	1230 AUP	CHAPEK-CARLETON LORI	1083 AUP		
BOWLUS BILL	342 AUP	CHAPLIN DAVID	3308 ATT		
BOYCE DAVID	2671 ATT	CHAPMAN CHERYL LYNN	1297 AUP		
BOYCE JEAN	2672 ATT	CHAPMAN JOHN	780 AUP		
BOYD STEPHEN	3224 ATT	CHAPMAN RALPH	2825 ATT		
BOYLE ANDY	1231 AUP	CHAPMAN VERONICA	2904 AUP		
BRAMMER CECILIA	2421 ATT	CHARNAS SUZY MCKEE	2898 AUP		
BRAMMER ERIC	2422 ATT	CHARRETTE ROBERT	1298 AUP		
BRAMMER FRED	2420 ATT	CHAUVIN CY	2610 ATT		
BRANDSTETTER DANUSIA	2862 AUP	CHAYKA CATHERINE	1300 AUP		
BRANDT BEVERLY LOUISE	1234 AUP	CHEKNOFF ANTON	1301 AUP		
BRANDT RICHARD	353 AUP	CHEWNING MARYANNE	159 AUP		
BREIDBART SETH	165 AUP	CHEWNING THOMAS	460 AUP		
BRESLAU DAN	1236 AUP	CHIKI KEITH	139 AUP		
BRESLAU ESTHER	1237 AUP	CHILSON ROB	3366 ATT		
BRESLAU MICHAEL	1238 AUP	CHILSON ROB	3367 ATT		
BREWER ALTA	3174 ATT	CHISHOLM PAUL S.R.	850 AUP		
BRICE JIM	2921 AUP	CHONG DORLINDA	169 AUP		
BRICKNER GEORGE	1241 ATT	CHONG TINA	2863 AUP		
BRIDGES GREG	241 AUP	CHONG TONY	3031 ATT		
BRIN DAVID	1242 AUP	CHRISTIAN CARDLE	3242 ATT		
BROCKNEY KRISTA	2513 ATT	CHRISTOFFERS KARL	2738 ATT		
BROOKS JOANNE	672 AUP	CHRISTY PAMELA	2759 ATT		
BROOKS Jr. CUYLER	1 AUP		1305 AUP		
BROOMHEAD ANN	1244 AUP		3130 ATT		
BROWN BRIAN EARL	2712 ATT		3101 ATT		
BROWN CHARLES	2519 ATT				



ATTENDING

CUMMINGS MAZIE	757 AUP	EFFINGER GEORGE	847 AUP	GAUDRA ROBERT	2819 ATT
CUNNINGHAM DANA	706 AUP	EISEN JANICE	574 AUP	GAUDRA ROBERT GUEST OF	2820 ATT
CUNNINGHAM LOWELL	2640 ATT	EISENBERG LISE	1433 AUP	GAZDECKI DENNIS	3155 ATT
CURIOUS BOOK SHOP	2803 ATT	EISENMAN RICH	1435 AUP	GAZDECKI SANDRA	976 AUP
CUTSHAW RADCLIFFE	1359 AUP	EISENMAN WANDA	1434 AUP	GEAR BOBBY	1089 AUP
D'AGOSTINO SHEILA	2935 ATT	ELDER MARIE	2915 AUP	GEAR MARTY	1091 AUP
D'ALESSIO ANGELO	1360 AUP	ELDRID MARY ANN	2585 ATT	GELB JANICE	1516 AUP
D'ALESSIO CONNIE	1361 AUP	ELEASARI EYLAT	2717 ATT	GELFAND LARRY	12 AUP
DAILEY YVONNE	3012 AUP	ELENDT MARK	1095 AUP	GENOVAUDI FRANCINE	2838 AUP
DANCIK RONALD	2890 AUP	ELLERS MARJII	1440 AUP	GENOVAUDI JOSEPH	2839 AUP
DANIEL JAMES	1366 AUP	ELLERSIECK FRANK	3258 ATT	GENOVESE MIKE	2572 ATT
DANIEL LINDA	1367 AUP	ELLIOTT RUSS	360 AUP	GENTILI KARL	646 AUP
DANIELS ROBERT	721 AUP	ELLIS STEVEN	2490 ATT	GERALD BARBARA	1519 AUP
DAUGHERTY JAMES	871 AUP	ELLISON LINDA	3205 ATT	GERDS ERIC	982 AUP
DAUGHERTY KATHERYN	876 AUP	ELLISON, II THOMAS	3204 ATT	GERST DEBORAH	1521 AUP
DAVENPORT WANDA	3269 ATT	ELMS DUANE	1441 AUP	GERST JAY	1522 AUP
DAVIDSON HOWARD	3319 ATT	ENDREY THOMAS	1442 AUP	GHEEN RHONDA	2836 AUP
DAVIS BONNIE	2489 ATT	ENSLING JEAN	3066 ATT	GIBBONS DAVID	3351 ATT
DAVIS GLYN	3175 ATT	ENYART CHRIS	2952 ATT	GIBBONS JOHN	477 AUP
DAVIS GREGG	1373 ATT	EPPELSON JOHN	2500 ATT	GIBBS PATRICK	973 AUP
DAVIS JOE	3189 ATT	EPSTEIN LOUIS	1446 AUP	GIBSON CAROL	3375 ATT
DAVIS PHILIP	3154 ATT	ERICKSON LINDA	2768 ATT	GIESE TOM	1527 AUP
DAVIS PHOEBE	1371 AUP	ERWIN JAMES	3178 ATT	GIESELER IDALEE	3084 ATT
DAWIE DIANNE	3232 ATT	ESLINGER JOAN	487 AUP	GIESELER KARL	3190 ATT
DAWIE RUSSELL	3233 ATT	ETTIEN DEBORAH	1448 AUP	GIGUERE PAUL	2536 ATT
DAY JOY	3207 ATT	EUDALY JUDITH	75 ATT	GILLEN LORI	2694 ATT
DAY PHYLLIS	3208 ATT	EVANS DIANE	2599 ATT	GILLEY RONNIE	1529 AUP
DAZZO BERRY	788 AUP	FABISCH ROBERT	1453 AUP	GILLIAM DAVID	740 AUP
DE CAMP CATHERINE	3322 ATT	FAIRCLOTH BOB	1013 AUP	GILLIAM RICHARD	172 AUP
DE CAMP L. SPRAGUE	3323 ATT	FALCON ROSIE	3035 ATT	GILLILAND ALEXIS	1530 AUP
DE MARCO THOMAS	3324 AUP	HUDSON TIM	3037 ATT	GILLILAND DOLLY	1531 AUP
DECKERT DAN	3306 ATT	FARBER DEBORAH	2491 ATT	GILPATRICK JIM	10 AUP
DECKERT DANISE	3307 ATT	FARBER JACOB	2492 ATT	GILPATRICK LYDIA	2523 ATT
DEGAN PATRICK	3019 ATT	FARINELLI CINDY	2832 AUP	GIMBLET J.R.	872 AUP
DELACRUZ DAUNE	1380 AUP	FARINELLI MIKE	1455 AUP	GLENNON STEVE	1007 AUP
DELAUNE SCOTT	2973 AUP	FARMER DALE	1459 AUP	GLICKSON MIKE	1005 AUP
DELITCH MARTIN	1385 AUP	FARMER GUEST OF JAMES	2454 ATT	GLORIOSO MIKE	2746 ATT
DENEBEIM JAY	2528 ATT	FARMER JAMES	1460 AUP	GLYER MIKE	787 AUP
DENEROFF LINDA	877 AUP	FARR KIM	1464 AUP	GODFREY DARAMEA	71 AUP
DENKER NANCY	2888 AUP	FASS AMY	2996 ATT	GODERTZ BARBARA	301 AUP
DENNETT BRY ELLEN	599 AUP	FAUSEL KAY	1097 AUP	GODERTZ JOHN	302 AUP
DENNIS JANE	175 AUP	FAWCETT WILLIAM	602 AUP	GOLD BARRY	1534 AUP
DENNIS SCOTT	174 AUP	FEDER MOSHE	384 AUP	GOLD LEE	1535 AUP
DENTON BARBARA	2429 ATT	FELD HAROLD	1468 ATT	GOMES RON	881 AUP
DENTON BRADY	2428 ATT	FELDBAUM GARY	377 AUP	GOMOLL JEANNE	1541 AUP
DENTON RAYMOND	3321 ATT	FELLER TOM	3011 ATT	GONZALEZ JACK	1542 AUP
DETHLESSEN RAE	2480 ATT	FENSIN ANNE BRISTOW	2796 ATT	GONZALEZ JAMES	3015 AUP
DEUTSCHER DALE	3248 ATT	FENSIN ELIZABETH	101 AUP	GONZALEZ JEAN	2808 ATT
DEVORE HOWARD	2568 ATT	FERER SUSAN	1471 AUP	GOTT JANICE	1546 AUP
DEXTER MAISHA	3085 ATT	FERRARA ROBERT	2833 AUP	GOTTLIEB LOUIS	2883 AUP
DICKSON GORDON	3041 ATT	FIEDER EDWARD	3136 ATT	GOTTLIEB SHERRY	1548 AUP
DIETZ ANN	1390 AUP	FIELDS CARL	2835 AUP	GOUGH GREG	894 AUP
DIETZ FRANKLIN	1391 AUP	FIELDS CARL	2858 AUP	GOUGH MARSHA	879 AUP
DIETZ KARL	1389 AUP	FILIPOWICZ KATIE	1477 AUP	GOULD STEVEN	1082 AUP
DIETZ LOREN	1388 AUP	FILMORE THOMAS	1478 AUP	GRACE PETER	1551 AUP
DIODS MIKE	1393 AUP	FILONOW BRENDA	3120 AUP	GRADY DAPHNE	374 AUP
DILLON DOROTHY	2443 ATT	FINAR FERNHOLT	3241 ATT	GRANT PATRICIA	1553 AUP
DILLSON MICHAEL A.	1395 AUP	FINCH-RAYNER SHEILA	2704 ATT	GRAY DEBORAH	3079 ATT
DILLWORTH JOHANNE	704 AUP	FINELY CORLISS	387 AUP	GRAY DONALD	3080 ATT
DILLWORTH III JOHN	705 AUP	FLAGAN SALLY	1483 AUP	GRAY KARA	39 AUP
DIMAGGIO JOE	1396 AUP	FLETCHER BETH	250 AUP	GRAY LAWRENCE	2644 ATT
DOKOOZIAN CAROLYN	3069 ATT	FLOYD GEORGE	261 AUP	GRAY WAYNE	992 AUP
DOKOOZIAN NANCY	3071 ATT	FOLGIO PHIL	1486 AUP	GREEN ELEANOR	3008 ATT
DOLAN PEBBY	3374 ATT	FONTECCHIO JR. OSVALDO	1084 AUP	GREEN JON	875 AUP
DOMS DENNIS	3214 ATT	FORD BONNIE	2889 AUP	GREEN JOSEPH	2918 AUP
DONAHUE II CHUCK	1015 AUP	FORD JAMES GORDON	2589 AUP	GREEN MELISSA	3045 ATT
DONALDSON CAROL	2541 ATT	FOSS RICHARD	278 AUP	GREEN PATTE	3044 ATT
DONALDSON HAROLD	2542 ATT	FOSTER ALAN DEAN	1490 AUP	GREEN ROY	866 AUP
DONEWITZ IRA	1403 AUP	FOSTER BRAD	207 AUP	GREEN SARRETTA	873 AUP
DONOVAN ROSE MARIE	357 AUP	FOSTER JOANN OXLEY	1491 ATT	GREEN JR. RALPH	1558 AUP
DOOLEY CHRIS	1036 AUP	FOSTER, MRS. ALAN DEAN	2856 AUP	GREENBAUM GARY	1559 AUP
DORN BETTY	3303 ATT	FOURRIER CLAY	313 AUP	GREENBERGER DEBORAH	1560 AUP
DORN RONALD	3302 ATT	FOURRIER MARINE	312 AUP	GREENBERGER ROBERT	1561 AUP
DOROSCHENKO LEO	1408 AUP	FOULER HEATHER	996 AUP	GREENS LISA	1562 AUP
DORR JAMES	1409 AUP	FOWLER WAYNE	1006 AUP	GREY LOUIS ELVER	2499 ATT
DOUGLASS CHERI	2628 ATT	FRANBACH JOHN	1495 AUP	GRIBBS MYRT	3270 ATT
DOUGLASS JOHN	2629 ATT	FRANE NOLA	2497 ATT	GRIBBS JR MYRT	729 AUP
DOUELL CATHERINE	2859 AUP	FRANCIS STEVE	183 AUP	GRIFFITH HEATHER G.S.	1565 AUP
DOULER FRANK	1413 AUP	FRANKLIN ELLEN	1496 AUP	GRIFFITH KURT	1566 AUP
DREW WARREN	1387 AUP	FRANKLIN JOHN	1497 AUP	GRIFFITH ROB	309 AUP
DREXLER MARC	1011 AUP	FRANZEN JEFF	1109 AUP	GRIFFITH, III L. BROOKS	3284 ATT
DREXLER MARC	2654 ATT	FRAZIER TODD	882 AUP	GRIOSBY P. J.	2644 ATT
DREXLER MARC, GUEST 1	2655 ATT	FRECH JAMES	1500 AUP	GRILLOT JOEY	870 AUP
DREXLER MARC, GUEST 2	2656 ATT	FREEMAN BARRY	1501 AUP	GRIMES KEN	1567 AUP
DREXLER MARC, GUEST 3	2657 ATT	FREEMAN H. DENISE	1502 AUP	GROAT JIM	3344 ATT
DREXLER MARC, GUEST 4	2658 ATT	FREEMAN LINDA	2469 ATT	GROCE RENEE	1568 AUP
DREXLER MARC, GUEST 5	2659 ATT	FREGNI GIOVANNA	1503 AUP	GROSKO JR STEPHEN	538 AUP
DRICKS HOWARD	2922 AUP	FREMOM PAH	1504 AUP	GROSS ELIZABETH	1570 AUP
DRIDBE AUSTIN	1415 AUP	FREYER JOHN	3007 ATT	GROSS ERIC	52 AUP
DUARTE FRED	2806 ATT	FRIANF DOUGLAS	1505 ATT	GROSSBERG MICHAEL	381 AUP
DUBE DONNA	3202 ATT	FRIEDMAN JUDITH	3210 ATT	GROVES SHEILA	1574 AUP
DUESTER AL	1418 AUP	FRIEDMAN RICHARD	3211 ATT	GROW INDIA BOONE	2645 ATT
DUFF JOHN	1419 AUP	FRIERSON PENNY	228 AUP	GROW JIM	2646 ATT
DUFF LYNN ELLEN	3283 ATT	FRIERSON, III MEADE	229 AUP	GRUEN REV. RICHARD	1576 AUP
DUMOND LISA	2608 ATT	FRIEZE RANDOLPH	1507 AUP	GUARINO BETTYANN	865 AUP
DUNKLIN J.R.	2437 ATT	FUERSTENBERG JIM	1508 AUP	GULLDORY CRYSTAL	832 AUP
DUPREE TOM	2438 ATT	FULKERSON JAMES	1509 ATT	GULLOT MARGIE	2834 AUP
DUPUY PAMELA	2439 ATT	FULLER FREDERIC	988 AUP	GUNDERSON ELEANOR	1580 AUP
DURGIN NANCY	3273 AUP	FULLER SARA	1510 ATT	GUTHRIE JULIE	2451 ATT
DYER ANDREW	1423 AUP	FUSEK JOHN	3135 ATT	OUTKES RICHARD	2992 AUP
DYSINGER PATRICIA	2753 ATT	GABRIEL BARBARA	2586 ATT	GUY BILL	2953 ATT
EASTLAKE JILL	1424 AUP	GAILDON DEAN	85 AUP	GUY DEBBIE	2954 ATT
EASTLAKE, III DONALD	1425 AUP	GALLAGHER CHELSEA ANN	3313 ATT	GUY ERIC	358 AUP
EASTLAKE, IV DONALD	1426 AUP	GALLAGHER-JU DIANA	3312 ATT	GWINN BETH	176 AUP
EDGEELL ELISE	3358 ATT	GALLDWAY THOMAS	786 AUP	HABER KAREN	1582 ATT
EDGEWORTH BOB	3121 ATT	GANLEY W. PAUL	2891 AUP	HAFER KEN	36 AUP
EDGEWORTH KATHY	3122 ATT	GANN ROBERT	587 AUP	HAGER DANA	1086 AUP
EDICK PETER	1431 AUP	GARB GORDON	2421 ATT	HAGER JERRY	1081 AUP
EDWARDS CHRIS LOGAN	1432 AUP	GARRETT HOLLY	2909 AUP	HAGER KEVIN	1107 AUP
EDWARDS NANCY	147 AUP	GASKINS JUDITH ANN	1515 AUP		

ATTENDING

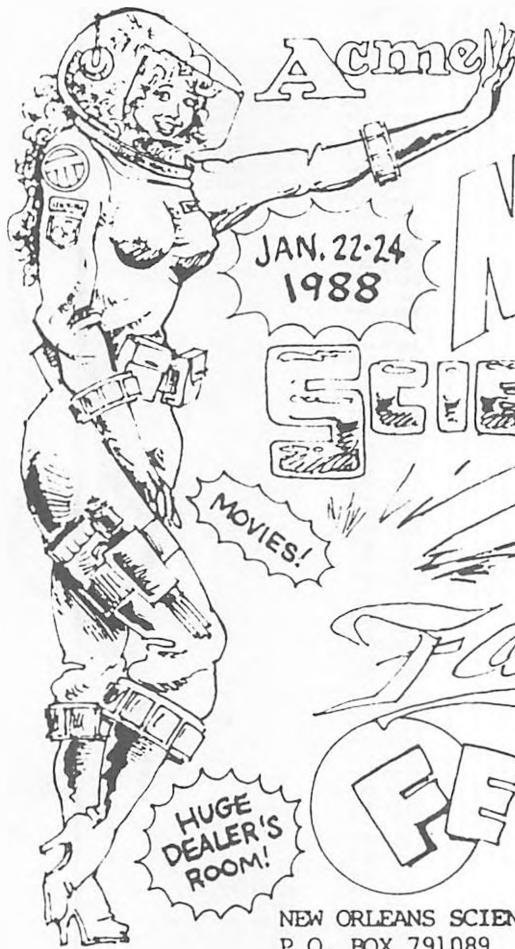
HAGER SHAWN 1110 AUP
 MAHN D. AURIETTE 2660 ATT
 MAIG PAUL 1581 AUP
 MAIGHT CINDY 385 AUP
 HALDEMAN CYNTHIA 2748 ATT
 HALDEMAN GAY 673 AUP
 HALDEMAN JOE 671 AUP
 HALL MARTIN 2562 AUP
 HALL SCOTT 1090 AUP
 HAMBLEN MICK 300 AUP
 HAMER DOUGLAS 2754 ATT
 HAMILTON NORA 2552 ATT
 HANN VALERIE 2446 ATT
 HAMMER PATRICIA 3352 ATT
 HAMMER TED 3353 ATT
 HANCOCK D. LARRY 2557 ATT
 HANCOCK JUDY DIX 2556 ATT
 HANGER NANCY 591 AUP
 HANNAFORD GARY 1590 AUP
 HANRAHAN JAMIE 3259 ATT
 HANSEN MARK 1591 AUP
 HARBAUGH CHRIS 3077 ATT
 HARDEBECK JOHN 2742 ATT
 HARDIN BARBARA 3104 ATT
 HARDISON DIAN LYNNE 2865 AUP
 HARMS L.K. 1594 AUP
 HARNED SHARON 181 AUP
 HARNES JACK 868 AUP
 HARRIGAN CHRIS 1596 AUP
 HARRIGAN HAROLD 1597 AUP
 HARRIGAN JENEVIEVE 1598 AUP
 HARRIGAN LISA 1599 AUP
 HARRIS DELL 173 AUP
 HARRIS FRANCINE 2866 AUP
 HARRIS GEO 379 AUP
 HARRIS JOHN 715 AUP
 HARRIS JONATHAN 2532 ATT
 HARRIS LYNN 714 AUP
 HARRIS SUSAN 2533 ATT
 HARRISON JOY 86 AUP
 HARRMS ERIC 3159 ATT
 HARSH CLAUDIA 2670 ATT
 HARTMAN KIMBERLY 3296 ATT
 HARTLOVE AIMEE 3195 ATT
 HARTLOVE JAY 3196 ATT
 HARVEY NANCY 3185 ATT
 HARVEY, JR. DAVID 3184 ATT
 HASBROUCK PAUL 3339 ATT
 HASTIE DAVID JOHN 1602 AUP
 HATHAWAY ROSS 1604 AUP
 HATTON CHRISTOPHER 1605 AUP
 HAULEY CYNTHIA 2464 ATT
 HAWKINS DONNA 1607 AUP
 HAWKINS RANDAL 1606 AUP
 HAYES BARBARA 1609 AUP
 HAYES DUANE 1610 AUP
 HAYES NANCY 2840 AUP
 HAYES REILLY 990 AUP
 HEADLEY-MORIARTY BEVERLEY 2448 ATT
 HEADLONG JULIAN 2995 ATT
 HEARD ROBERT 998 AUP
 HEBEL ALEXIA 1611 AUP
 HEBEL WILLIAM 1612 AUP
 HEDGES WALTER 984 AUP
 HEDL WILLIAM 1614 AUP
 HEIBERG KEITH 2999 ATT
 HELGESEN MARTY 2647 ATT
 HENDEE LEON III 812 AUP
 HENEDHAN JACK 263 AUP
 HENLEY GARY 1619 AUP
 HENNESSY JOHN 3256 ATT
 HENNESSY JULIE 3257 ATT
 HENRY TRACY 1004 AUP
 HENRY, JR. MICHAEL 2940 AUP
 HEPPERLE ROBERT 1621 AUP
 HERKART JANET 2740 ATT
 HERKART PAUL 2741 ATT
 HERMAN FELICIA 644 AUP
 HERD PAMELA 3359 ATT
 HERRING KITTY DELL R. 3144 ATT
 HERRING STUART 3145 ATT
 HERRON SHAWN 1008 AUP
 HERRUP MARK 1625 AUP
 HERZ ALISTAIR 3265 ATT
 HERZ ANDREA 3266 ATT
 HERZ MELANIE 3186 ATT
 HERZ RAY 3187 ATT
 HERZ ROBERTA 3267 ATT
 HESTER ROBERT MACK 2981 AUP
 HEWITT MARY LOUISE 3056 ATT
 HEYDT DAVID 797 AUP
 HEYDT DOROTHY 795 AUP
 HEYDT ESTHER 806 AUP
 HEYDT MARGARET 794 AUP
 HEYDT WILSON 796 AUP
 HICKMAN CAROLYN 2789 ATT
 HICKMAN LYNN 239 AUP
 HIGH MINDY 893 AUP
 HILL DAMON 2457 ATT
 HILL LINDA 3376 ATT
 HILL RICHARD 570 AUP
 HILL SAM 2841 AUP
 HILLIS ROBERT 1629 AUP
 HILLYARD DENISE 3304 ATT
 HILLYARD KENNETH 887 AUP
 HILT MARGARET 1630 AUP
 HILTON JAMES 3228 ATT
 HIMMELSBACH ROBERT 1631 AUP
 HINA MOLLY 586 AUP
 HINMAN ELAINE 523 AUP

HINTZE GEOFF 528 AUP
 HINZ COLIN 2743 ATT
 HIPPO SCOTT 1633 AUP
 HITCHCOCK CHIP 1636 ATT
 HLAWATY ARTHUR 20 AUP
 HODGKINSON DEBBIE 846 AUP
 HOEANIK SUAN 1640 AUP
 HOEY DAN 653 AUP
 HOFSTETTER JOAN 1638 ATT
 HOIN PATRICIA 2623 ATT
 HOLEC KIM 1088 AUP
 HOLIK RON 3141 ATT
 HOLLIS JOHN A. R. 1641 AUP
 HOLMBERG JOHN HENRI 3223 ATT
 HOLMES JOHN ERIC 3332 AUP
 HOLT MELISSA 2823 ATT
 HOLTMAN DAVID 1643 AUP
 HONECK BUTCH 2633 ATT
 HONECK SUSAN 2634 ATT
 HONG MARY ANN 2650 ATT
 HOPKINS BEN 163 AUP
 HOTZ HENRY 1753 AUP
 HOUSTON WALTER 900 AUP
 HOWARD GERRI 1646 AUP
 HOYES MIKE 581 AUP
 HRANEK BOB 2734 ATT
 HRANEK CATHY 2735 ATT
 HUBBARD RACHEL 919 AUP
 HUCKENPOHLER J.G. 2436 ATT
 HUCKLE CYNTHIA 3326 AUP
 HUCKLE CYNTHIA 3361 ATT
 HUDES DANA 1649 AUP
 HUDSON JIM 1650 AUP
 HUDSON SHEILA 3036 ATT
 HUFF STEPHEN 2601 ATT
 HUGHES BINKER 2408 ATT
 HUGHES DIANE 293 AUP
 HUGHES RANDY 3221 ATT
 HUGHES STEVE 2407 ATT
 HULL ELIZABETH ANNE 1652 AUP
 HUMMEL FRANKLIN 2433 ATT
 HUMPHREY THOMAS 1653 AUP
 HURST DAVID 1655 AUP
 HUSKEY ALAN 3173 ATT
 HUSKEY LISA 3336 ATT
 HUSSEY DEBRA 187 AUP
 HYDE RICHARD 2766 ATT
 HYKES-BAILEY MURIEL 53 AUP
 Haasist assist 913 AUP
 IHMAT DAVID 378 AUP
 INSELBERG LEE 2677 ATT
 INSIDIUS HEYDT COMBINE 798 AUP
 INZER GEORGE 2590 ATT
 IRWIN MARK 929 AUP
 ISAACS FRED 2652 ATT
 IVEY WILLIAM 3260 ATT
 IWATAKE ROY 1666 AUP
 JACKOWSKI ANN MARIE 1668 AUP
 JACKOWSKI WALTER 1669 AUP
 JACKSON ALETA 2486 ATT
 JACKSON CATHERINE 1670 AUP
 JACKSON JOHN 2707 ATT
 JACKSON L. JEANAN 2708 ATT
 JACKSON MARY 297 AUP
 JACKSON SOURDOUGH 1009 AUP
 JACOB PENELOPE 2805 ATT
 JACOBS JAKE 3123 ATT
 JACOBS NORMAN 2763 ATT
 JAFFE SAUL 1673 AUP
 JAFFE WILLIAM 1035 AUP
 JAMES LAURA 3333 AUP
 JAMES PATRICIA 1675 AUP
 JAMIESON PERRY 3142 ATT
 JAMISON PAUL 1676 AUP
 JAROB DENNIS 1677 AUP
 JENCEVICE LINDA 1679 AUP
 JENCEVICE MICHAEL 1680 AUP
 JENNINGS JEANNETTE 2984 AUP
 JENSEN RICHARD 1682 ATT
 JEUDE BAMBANDA 114 AUP
 JEWETT AMY 2884 AUP
 JEWETT ROB 2885 AUP
 JOHNSON CAROL 1686 AUP
 JOHNSON DONALD 2540 ATT
 JOHNSON ELEANOR 1696 AUP
 JOHNSON ELIZABETH 1694 ATT
 JOHNSON ERMA 1690 AUP
 JOHNSON JEANNE 1958 AUP
 JOHNSON JULIE 1691 AUP
 JOHNSON KAREN 1692 AUP
 JOHNSON KAY 1693 AUP
 JOHNSON RACHEL 3188 ATT
 JOHNSON RACHEL 3192 ATT
 JOHNSON ROBERT 2415 ATT
 JOHNSON WILLIAM 1689 AUP
 JOHNSON, JR. A.J. 2842 AUP
 JOHNSTON ANDREW 911 AUP
 JOHNSTON JANET 2844 AUP
 JONES BRYAN 530 AUP
 JONES CRAIG 2483 ATT
 JONES DEBORAH 2676 ATT
 JONES J. WALLACE 519 AUP
 JONES LENORE JEAN 1700 AUP
 JONES MARK 1701 ATT
 JONES RAYMOND 481 AUP
 JONES ROBERT 2698 ATT
 JORDAN JEFFREY 647 AUP
 JORDAN ROBERT 251 AUP
 JORDAN ROBERTA 28 AUP
 JOSEPHANS KEN 1705 AUP

JOYCE JOYCE 3087 ATT
 JOYCE SUBAN 3088 ATT
 JUOKOMITZ RUTH 252 AUP
 JUOE JANET 2595 ATT
 JUZENAS JOAN 1708 AUP
 KADEN NEIL 901 AUP



KARPIERZ JOE 1714 AUP
 KATO KEITH 1715 AUP
 KATZE RICHARD 5 AUP
 KAUFMAN JERRY 2867 AUP
 KAUFMAN KEITH 639 AUP
 KAUNAUUGH ANNETTE 1719 AUP
 KAUVENY PHIL 78 AUP
 KEESAN MARIUS 1722 AUP
 KEIFER MARGARET FORD 2691 ATT
 KEISEL KENNETH 1723 AUP
 KEISEL MARYANN WALTHER 1724 AUP
 KEITH LORNA 2776 ATT
 KELLER KEN 1726 AUP
 KELLER MICHAEL 3148 ATT
 KELLER BRIAN 908 AUP
 KELLEY TED 2879 AUP
 KELLY MIRIAM 906 AUP
 KELLY PATRICK 904 AUP
 KELLY RICHARD 2679 ATT
 KENDERDINE BONNIE 604 AUP
 KENNEDY DENNIS 2495 ATT
 KENNEDY EILSEEN 2506 ATT
 KENNEDY MIKE 382 AUP
 KENNEDY NELDA 388 AUP
 KENNEDY PAT 1729 AUP
 KENNEDY PEGGY 1730 AUP
 KENNY EDWARD 1731 AUP
 KEVICH JOHN 2709 ATT
 KIEBLER ERIC 162 AUP
 KIMBRIEL KATHARINE 588 AUP
 KING ANTHONY SCOTT 1113 AUP
 KING DEBORAH 513 AUP
 KING PAUL 606 AUP
 KINGSBURY JOHN 769 AUP
 KINHARD RUSSELL 1737 AUP
 KIRSTEIN SABINE 1741 AUP
 KISER LARA 479 AUP
 KILN HABEL 2459 ATT
 KLAUS DAVID 677 AUP
 KLEIN JAMES 3220 ATT
 KLEIN JAY KAY 1742 AUP
 KLUS JASON 3032 ATT
 KLUS MICHAEL 3033 ATT
 KLUS SHERRY 3034 ATT
 KNAPP WILLIAM BRUCE 3128 ATT
 KNIEZAN CHERYL 1016 AUP
 KNIEZAN DON 1021 AUP
 KNIEZAN DORRIE 1037 AUP
 KNIGHT MARGO 2596 ATT
 KNIGHT STEVEN 2597 ATT
 KNOPF ARNOLD 3293 ATT
 KNOPF MARYANN 3294 ATT
 KOCH IRVIN 234 AUP
 KOKINIS BARBARA 1748 AUP
 KOLAR NANCY 2844 AUP
 KONE DAVID 915 AUP
 KONKIN, III SAMUEL 405 AUP
 KONKOL KENNETH 1750 AUP
 KODISTRA PATTI 3373 ATT
 KOON STEVE 465 AUP
 KOROSSY EVE CLAIRE 2950 ATT
 KOROSSY RAVE 2951 ATT



Acme! SCIENCE FICTION CORPORATION presents...

THE NEW ORLEANS

JAN. 22-24
1988

SCIENCE FICTION

MOVIES!

Fantasy
FESTIVAL



GAMING!

HUGE DEALER'S ROOM!

NEW ORLEANS SCIENCE FICTION AND FANTASY FESTIVAL
P.O. BOX 791089
NEW ORLEANS, LA 70179-1089

GUESTS:

- GEORGE R. R. MARTIN**
- GEORGE ALEC EFFINGER**
- STEVE V. COLE** DESIGNER OF STARFLEET BATTLES
- GREG COSTIKYAN** DESIGNER OF TOON & PARANOIA
- S.M.O.F. GUEST JOHN GUIDRY** CHAIRMAN NOLA CON II

REGISTRATION

\$10.00 TO SEPT. 7, 1987
\$15.00 AT THE DOOR

KOSTANICK CHRIS	2924 AUP	LANG ROBIN	1772 AUP	LEONARD TRUDY	2799 ATT
KOVALCIN DIANE	2976 AUP	LANGER MAJ. LYNN	2893 AUP	LEPPIK MARY	3111 ATT
KOVALCIN JAMES	2977 AUP	LANGSAM DEVRA	1773 AUP	LETSON RUSSELL	3043 ATT
KOZLOWSKI MICHAEL	2749 ATT	LARSON DAVID	3078 ATT	LEVIN JENNIFER	210 AUP
KRAMER ERIC	654 AUP	LARUE CANDICE	1775 AUP	LEVIN ROBERT	2594 ATT
KRAMER ERIC	2493 ATT	LARUE STEPHEN	1776 AUP	LEVINE DAVID	605 AUP
KRAMER ERIC	2673 ATT	LASKOWSKI GEORGE "LAN"	1777 AUP	LEVINE DAVID	931 AUP
KRAMER ERIC, GUEST OF	2674 ATT	LAVENDER ROY	1780 AUP	LEVITT TOD	1033 AUP
KRAMER GUEST OF ERIC	2494 ATT	LAVENDER ROY	2878 AUP	LEWIS PAGE EILEEN	1798 AUP
KRAULAND HERMAN	3124 ATT	LAWLEY VALERIE	3176 ATT	LIBERMAN BEN	1802 AUP
KRAUSE GEORGE	3334 AUP	LAWRENCE MATT	1783 AUP	LICHTENBERG JACQUELINE	1803 AUP
KRAUSE STEVEN	2612 ATT	LAY TONI	3350 ATT	LICHTENBERG SALOMON	1804 AUP
KRAUSE STEVEN GUEST 2	2614 ATT	LAYTON ALEXIS	492 AUP	LIDRAL BOB	407 AUP
KRAUSE STEVEN GUEST 3	2615 ATT	LE BRUN CINDY	2729 ATT	LIEBMAN MICHAEL	1805 AUP
KRAUSE STEVEN, GUEST 1	2613 ATT	LE BRUN WALLACE CLAY	2730 ATT	LIEDER RICK	1806 AUP
KRIFTCHER ARLINE	1756 AUP	LEACH ROZANNE	809 AUP	LIEN ANTON	1807 AUP
KRUEGER MARJ	754 AUP	LEBLANC GAIL	1785 AUP	LIGHTSEY FLOYD	489 AUP
KRUPP JUDITH	1757 AUP	LEBOVITZ NANCY	2448 ATT	LILTZ BARBARA FISTER	2744 ATT
KRUPP LOUISA	1758 AUP	LEBOVITZ STEVE	928 AUP	LILTZ FRANK	2745 ATT
KRUPP REBECCA	1759 AUP	LEDET JOY	295 AUP	LINAWEAVER BRAD	1094 AUP
KRUPP ROY	1760 AUP	LEE REBECCA	2648 ATT	LINAWEAVER CARI	1106 AUP
KURDYLA VINCENT	YTT	LEE RONALD	2649 ATT	LINDOU ELLEN	1809 AUP
KUSHNER HANIVUA	XUP	LEE STEVEN	512 AUP	LINDOM MICHAEL	1811 AUP
KYLE ARTHUR	3076 ATT	LEEPER EVELYN	2573 ATT	LINDSAY TAMAR	1092 AUP
KYLE DAVID	899 AUP	LEEPER MARK	2574 ATT	LITES DANIEL	2642 ATT
LACKEY ANTHONY	149 AUP	LEGER MATT	127 AUP	LITTLE JOYCE BURRIE	2643 ATT
LACKEY MERCEDES	151 AUP	LEHEU LAURA	157 AUP	LITTLE ROBERT	2643 ATT
LAFFITTE CHRISTINA	1763 AUP	LEININGER WILLIAM	3276 ATT	LIVINGSTON BRIAN	1812 AUP
LAMB JEAN	1765 AUP	LEISHER LINDA	2959 AUP	LLOCK OWEN	2907 AUP
LAMBARD C	1112 AUP	LEMON CONCHITA	2809 ATT	LOCKHART LARRY	668 AUP
LAMPERT DOUGLAS	1766 AUP	LEMON CONCHITA GUEST1	2810 ATT	LOCKHART LARRY	1814 AUP
LANDAN DR. STEPHEN	1767 AUP	LEMON CONCHITA GUEST2	2811 ATT	LOCKHART MARY LU	316 AUP
LANDRY LISA	218 AUP	LEMON CONCHITA GUEST3	2812 ATT	LOCKWOOD M. CAROL	1815 AUP
LANDRY PAUL	254 AUP	LEMONS MIKE	1022 AUP	LOCUS PUBLICATIONS	2520 ATT
LANE TIMOTHY	2778 ATT	LEONARD ALTON	2797 ATT	LOUUE KATHEI	422 AUP
LANG DAVID	1771 AUP	LEONARD FIDNA	2798 ATT	LOHMAN KAREN	2688 ATT

ATTENDING

LOHMAN ROBERT	2689 ATT	MCOHAN MICHAEL	3310 ATT	MOORE MARTIN	2423 ATT
LONEHAWK BRENDAN	1816 AUP	MCOIRAIN TİM	1889 AUP	MOORE NORMAN	93 AUP
LONEHAWK PATRICIA	287 AUP	MCGUINNESS GINGER	2607 ATT	MOORE RON	347 AUP
LONG DONNA	3317 ATT	MCINNIS LINDA	3098 ATT	MOORE SUSAN ROSS	1925 AUP
LOPER KAREN	3348 ATT	MCINTYRE MICHAEL	1104 AUP	MORALES JEREMY	3197 ATT
LORRAH JEAN	1818 AUP	MCINTYRE YONDA	2661 ATT	MORGAN CHANDRA LEA	1928 AUP
LOUIE BARY	3274 ATT	MCKEE ERIN	292 AUP	MORGAN LINDA	1926 AUP
LOVE LINDSY	399 AUP	MCKERSIE JOSEPH	3314 ATT	MORGAN RICHARD	65 AUP
LOW JUDITH	1821 AUP	MCKERSIE MARYEILEEN	3315 ATT	MORIARTY GERALD	2537 ATT
LUCHINI DRIANO	1823 AUP	MCLAIN JEAN	3368 ATT	MORIARTY RICHARD	1929 AUP
LUCIDO PHILIP	1018 AUP	MCLAIN JIM	3369 ATT	MORLEY MICHELLE	317 AUP
LUKE-HULE JAN	2770 ATT	MCMENAMON MARK	1894 AUP	MORMAN BRIAN	1933 AUP
LUNDRY ALEX	1826 AUP	MCHILLAN WILLIAM	2414 ATT	MORMAN MARY	1931 AUP
LUNDRY DONALD	1827 AUP	MCMURRIAN ALTHEA	1895 AUP	MORRIS ANN	743 AUP
LUNDRY GRACE	1828 AUP	MONEIL AMY	2593 ATT	MORRIS BILL	2723 ATT
LUNDRY MELANIE	1829 AUP	MONEIL RICHARD	1896 AUP	MORRIS KENDALL	220 AUP
LUNDRY JACK	1830 AUP	MCQUINN JAMES	3331 AUP	MORRIS SKIP	2522 ATT
LUNDRY JANINE	1831 AUP	HEAD TIM	1897 AUP	MORRISON ELIZABETH	1937 AUP
LUNDRY JON	1832 AUP	HEADOWS RONALD	927 AUP	MORRISON RENEE	1936 AUP
LUNDRY JUDY	1833 AUP	MEANS CASEY	3272 ATT	MORRISSEY PAT	2919 AUP
LUPESCU MARK	663 AUP	MEANS DAVID	63 AUP	MORRISSEY WAYNE	2920 AUP
LUPTON ROBERT	333 AUP	MEIER WES	1096 AUP	MOTT BARBARA	1430 AUP
LURIE BORDON	3106 ATT	MEIER WILMA	1102 AUP	MROZINSKI PHILIP	1941 AUP
LURIE MARIA ELENA	3107 ATT	MELLE, II WILLIAM	3048 ATT	MUELLER MARY ANNE	1943 AUP
LYMAN DAVID	1840 AUP	MELLO RACHEL	1019 AUP	MUELLER PAT	1944 AUP
LYMAN DEANNA L.D.	1841 AUP	MELNICK LINDA	59 AUP	MULE JIM	2769 ATT
LYNCH DICK	896 AUP	MELTSNER KEN	1899 AUP	MULLEN ALINE	2913 AUP
LYNCH NICKI	890 AUP	MELTZER LORI	1900 AUP	MULLEN FRANCINE	3115 ATT
LYONS DAWN	888 AUP	MELVIN NORMA JEAN	2791 ATT	MULLEN LATISHA	3116 ATT
LYONS THOMAS	898 AUP	MERCBLE NANCY	2527 ATT	MULLER BETTY	3137 ATT
MAC DERHOTT BRUCE	804 AUP	MERCIER PATTI	2739 ATT	MULLER RICH	3209 ATT
MAC DERHOTT DANA	803 AUP	MERCIER PHILIP	2740 ATT	MUMAW DONNALYN	816 AUP
MACFARLANE LETITIA	1846 AUP	MERRILL JEANNETTE	1902 AUP	MUMAW LORRAINE	836 AUP
MACFARLANE STEPHEN RODMAN	1847 AUP	MESEROLE LYNETTE	87 AUP	MURASKIN ELAINE	1945 AUP
MACLANEY THOMAS	1848 AUP	MESEROLE THOMAS	1903 AUP	MURPHY LYNN	2914 AUP
MADDEN JAMES	415 AUP	METCALF NORM	2728 ATT	MURPHY ROSE	1946 AUP
MADDEN RUSSELL	2710 ATT	MEYER BARBARA	1905 AUP	MURPHY ROSE GUEST #2	2419 ATT
MADDOX ALICE	2912 AUP	MEYER DANIEL	472 AUP	MURRAY JAMES	189 AUP
MADLE BILLIE	2925 AUP	MEYER KATHLEEN	2318 ATT	MURRAY JEFF	3136 ATT
MADLE ROBERT	2926 AUP	MEYER KATHY	544 AUP	MURRAY PAULA HELM	178 AUP
MAHLERS JANE	1020 AUP	MEYER LINDA	1801 AUP	MUSGRAVE HUFF	3329 ATT
MAHONEY RUSSELL	1851 ATT	MEYER RUTH	542 AUP	MUSGRAVE REAL	3328 ATT
MAHONEY, MD, RUSSELL	2881 AUP	MICHEL GUS	40 AUP	MUSS HIKE	2453 ATT
MAINHARDT RICIA	768 AUP	MIDDLETON MARGARET	3179 ATT	MUSS SUSANNE	2452 ATT
MAJESTE RICHARD	3047 ATT	MIDDLETON MORRIS	3180 ATT	MYERS MARY-GLYNN	1947 AUP
MALLINAK DOUGLAS	1854 AUP	MIDFORD PETER	3252 ATT	NAKASHIMA LEX	3 AUP
MALONE CAROL	3193 ATT	MILDEBRANDT NANCY	253 AUP	NEAGLE ROBERT	398 AUP
MALONE THOMAS	3194 ATT	MILES JANET	789 AUP	NEALON CHRISTINE	912 AUP
MALONEY PATRICIA	2685 ATT	MILLARD JOHN	2692 ATT	NEED RONALD	123 AUP
MAMI CARL	1855 AUP	MILLER ALAN	1908 AUP	NEFF JULIE	3280 ATT
MAMI ELAINE	1856 AUP	MILLER BRUCE	1909 AUP	NEFF RANDALL	3279 ATT
MAND MARY	2434 ATT	MILLER CRAIG	11 AUP	NEILSON INGRID	117 AUP
MANKIN DAVID	2985 AUP	MILLER GAY	670 AUP	NELSON CARL	2534 ATT
MANN JIM	266 AUP	MILLER KURT	710 AUP	NELSON LESLIE	2911 AUP
MANSFIELD CHRISTINE	491 AUP	MILLER MICHAEL	1911 AUP	NELSON MICHAEL	650 AUP
MANSFIELD J.	1858 AUP	MILLER ROSEMARY	2899 AUP	NERAT KATHY	2890 AUP
MARBLE CHRISTOPHER	790 AUP	MILLER SUSAN	3017 ATT	NEWMAN SHARON	3275 ATT
MARCH SANDI	1100 AUP	MILLY JANINE	2983 AUP	NEWTON BARRY	1953 AUP
MARKOCY MUFFY	2852 AUP	MINAMBRES TERESA	60 AUP	NEWTON JUDITH	1954 AUP
MARQUART DAVID	695 AUP	MINNEMAN LYNN	1914 AUP	NEY DARLENE	3203 ATT
MARQUART TAMARA	1863 AUP	MITCHELL ANDREA	802 AUP	NIVEN LARRY	1960 AUP
MARRON LYNN	2482 ATT	MITCHELL ELLIOTT	801 AUP	NIVEN MARYLYN	1961 AUP
MARTIN ANYA	2467 ATT	MITCHELL GEORGE	799 AUP	NIXON JAMES	2961 AUP
MARTIN DIANE	748 AUP	MITCHELL KAREN	3049 ATT	NORMANDY ELAINE	269 AUP
MARTIN GEORGE	1014 AUP	MITCHELL KATHY	2603 ATT	NORTON ANNE	1963 AUP
MARTIN GEORGE R.R.	1865 AUP	MITCHELL KIM	2667 ATT	NORTON, JR., BUD	402 AUP
MARTIN JEFFREY	3330 AUP	MITCHELL PETREA	800 AUP	NORWOOD MARY	2576 ATT
MARTIN JUDITH	2690 ATT	MIX MARYLYN	1917 AUP	NORWOOD RICK	2577 ATT
MARTIN SHERYL	2827 ATT	MOHAPEL CHARLES	935 AUP	NOTKIN DEBBIE	1051 AUP
MARTIN STEVE	2828 ATT	MONK JONATHAN	2430 ATT	NOUAK JOHN	488 AUP
MARTIN WILLIAM CULBERT	2635 ATT	MONTAGUE PAUL	2905 AUP	NOUELLI GREGORY	1123 AUP
MASON MICHAEL	886 AUP	MOON ELIZABETH	2466 ATT	NOVIN ANDREA BETH	3081 ATT
MASSA JACK	2779 ATT	MOON ELIZABETH	2488 ATT	NYE JUDY LYNN	608 AUP
MASSA MARILYN	2780 ATT	MOORE BILL	1922 AUP	O'DONOGHUE JAMES	27 AUP
MASTERS GERALD	1868 AUP	MOORE JOHN	837 AUP	OKES DEBROAH	1967 AUP
MATHENY CHARLES	1869 AUP	MOORE KEN	236 AUP	ODOM JAMES	3044 ATT
MATHEWS-BAILEY GAIL	2447 ATT	MOORE LYNNE	2424 ATT	OFF CENTAURY PUB #1	2543 ATT
MATHEWS-BAILEY GAIL	1870 AUP			OFF CENTAURY PUB #2	2544 ATT
MATNEY DAVID	2602 ATT			OFF CENTAURY PUB #3	2545 ATT
MATTHEWS, JR WINTON	397 AUP			OFF CENTAURY PUB #4	2546 ATT
MATZ TERRY	1872 AUP			OFF CENTAURY PUB #5	2547 ATT
MAULSBY STEPHEN	2703 ATT			OFF CENTAURY PUB #6	2548 ATT
MAULSEY KAREN	2702 ATT			OFF CENTAURY PUB #7	2549 ATT
MAYBERRY JAEEN	2813 ATT			OGDEN D. PETER	19 AUP
MAYBERRY NANCY	2814 ATT			OGLETREE LINDA	2718 ATT
MAYER ALASTAIR	3277 ATT			OGLETREE OWEN	2719 ATT
MAYER SALLY	3238 ATT			OLIANK MARTHA	2505 ATT
MAYHEW JOE	1876 AUP			OLIVERA HABEL	1970 AUP
MAYNARD JAY	2726 ATT			OLMSTED GENE	1971 AUP
MAYNARD JUDY	2727 ATT			OLSEN KARL	2440 ATT
MC CORKLE MARY	1012 AUP			OLSEN LIN	2439 ATT
MC CURRY SHARON	1010 AUP			OLSON MARK	57 AUP
MCAFFEE MICHAEL	1878 AUP			OLYNYK FRANK	270 AUP
MCCARTHUR JEFFREY	3253 ATT			ONTELL RONALD	1975 AUP
MCCALL BARBARA	923 AUP			OSBORN DARRELL	3051 ATT
MCCALL PAUL	930 AUP			OSBORN STEPHANIE	3052 ATT
MCCARTNEY NANCY	3356 ATT			OSELAND PAULA	154 AUP
MCCLARY MICHAEL	1880 AUP			OSWALD GLEN	394 AUP
MCCLYMONDS KAREN	1881 AUP			OSWALD RUTH	393 AUP
MCCOMBS CHERYL	1883 AUP			OTTEN MARY	1118 AUP
MCCONVILLE RITA	3288 ATT			OWINGS JUL	658 AUP
MCCORMICK EILEE	2978 AUP			PACKER ROSEANN	1981 AUP
MCCORMICK GRANT CONAN	2777 ATT			PAGE GERALD	318 AUP
MCCOY SEAN	734 AUP			PALMER SUSAN	1053 AUP
MCDONALD GLENN	29 AUP				
MCDONALD MIA	24 AUP				
MCDONALD TED	917 AUP				
MCDONELL CHUCK	2498 ATT				
MCFADDEN AMLINDA	1886 AUP				
MCGHAN HARLAN	3309 ATT				



PALMISANO R.J. MRS
PALMISANO RONALD

2653 ATT
874 AUP

ATTENDING

PARK TOM	1049 AVP	REISS RUSSEL	2620 ATT	SCHLOPFNER MIKE	771 AVP
PARKER HELEN	427 AVP	RENE COLLS	2418 ATT	SCHNEE MARC	1030 AVP
PARKER REMBERT	67 AVP	RENIHAN LYNNE	107 AVP	SCHNEIDER GENE	3215 ATT
PARKER SANDRA	1044 AVP	RENNER THERESA	2063 AVP	SCHNEIDER MARIE	2135 AVP
PARKER TONY	1985 AVP	REYNOLDS JAMES	460 AVP	SCHNEIDERHANT LILY	3338 ATT
PASECHNICK STEPHEN	1987 AVP	RHODES MARK	425 AVP	SCHOENBAUM BERNICE	3262 ATT
PATTEN FRED	426 AVP	RICE RONALD	2511 ATT	SCHORN CAROL	2569 ATT
PAUL SARA	1991 AVP	RICH LLOYD	2948 ATT	SCHORN PETER	2570 ATT
PAULAC DIANA	2815 ATT	RICHARDS MARK	2066 AVP	SCHREIBER SANDY	2630 ATT
PAULAC ROSS	2816 ATT	RICHARDSON VALERIE	627 AVP	SCHROEDER TIMOTHY	2138 AVP
PAULAT ERIC	1992 AVP	RIDDELL THERESA	2604 ATT	SCHUCK BILL	2139 AVP
PAULAT PEGGY RAE	664 AVP	RIDDER DAMN	3143 ATT	SCHULZINGER MARK	3020 ATT
PEARCE DUDLEY	1994 AVP	RIDDLE HARCOURT	3025 ATT	SCHULZINGER SALLY	3021 ATT
PEARCE J.W.	1995 AVP	RIDENOUR VICTORIA	3234 ATT	SCHWARTZ JULIUS	335 AVP
PEARCE J.W.	2987 AVP	RIEL ROBERTA	3290 ATT	SCHWEPPE JANE	2141 AVP
PEARCE M.A.	2988 AVP	RIFKIN HOWARD	2069 AVP	SCORE DAVID	2142 AVP
PEARCE M.A.	2989 AVP	RILEY CONNIE	1119 AVP	SCOTT CURTIS	3039 ATT
PEEL SUSAN	1034 AVP	RILEY HILLARIE	1028 AVP	SCOTT MARY	3040 ATT
PEER DAVID	106 AVP	RILEY MARK	1047 AVP	SCOTT-MILLER GARRETT VAN	498 AVP
PELLET JOHN	2391 ATT	RION FRANK	2435 ATT	SCRIMGEOUR HOWARD	2143 AVP
PELZ BRUCE	6 AVP	RIOS NEY	2965 AVP	SCRIVNER JOYCE	80 AVP
PENNELLY DAVID	1997 AVP	RITCH BILL	1116 AVP	SCZESNY JULIE	3305 ATT
PENNEY LLOYD	553 AVP	RITCHEE MARTIN	2575 ATT	SEGARD DANIEL	3255 ATT
PENNEY YVONNE	554 AVP	RIVERS JERRE	43 AVP	SELINGER GAIL	3295 ATT
PERHACH DONALD	2755 ATT	RIVERS KEITH	3000 ATT	SEPUVEDA RAMONA	3289 ATT
PERHACH PAT	1999 AVP	ROACH KHARIS	2792 ATT	SESTAK MICHAEL	2149 AVP
PERKINS WILLIAM	2001 AVP	ROACH RUSSELL	2793 ATT	SEVERING WILLIAM	2958 AVP
PERKINS, JR. FRANK	3024 ATT	ROBARDS ANN	2075 AVP	SHADY LANE ENTERPRISES	3345 ATT
PERKOWITZ MARC	2002 AVP	ROBARDS RUSSELL	2076 AVP	SHANE RANDALL	932 AVP
PETERKIN GAIL LARSEN	3181 ATT	ROBE BARY	201 AVP	SHAPIRO HANNAH M.G.	2980 AVP
PETERSEN GEORGE	3091 ATT	ROBERTS CAROL	2077 AVP	SHAPIRO SHELLY	2908 AVP
PETERSON ROBERT	2767 ATT	ROBERTS ELIZABETH	2651 ATT	SHAUB KAREN	3065 ATT
PETIT ANTHONY	408 AVP	ROBERTS FRANK	2078 AVP	SHAWCROSS WILLIAM	2152 AVP
PETTINGER PIERRE	1071 AVP	ROBERTS JOHN	2079 AVP	SHE'S FENSTERER I'M DICKSENS	291 AVP
PETTINGER SANDY	1026 AVP	ROBERTS LINDA	2080 AVP	SHEA DAVID	137 AVP
PEYTON ADRIAN	13 ATT	ROBERTS PETER	717 AVP	SHEFFIELD CHARLES	2875 AVP
PHILLIPS ANDREW	2009 AVP	ROBHOLZ JEFFREY	2056 AVP	SHELTON GREGORY	941 AVP
PHILLIPS C.L. CHUCK	3114 ATT	ROBICHAUX BEVERLY	3133 ATT	SHEPHERD JAMES	496 AVP
PHILLIPS DARYL	2011 AVP	ROBINETT LINDA LOUISE	3251 ATT	SHEPPARD RICKY	66 AVP
PHILLIPS DAVID	2666 ATT	ROBINSON ANDREW	1040 AVP	SHERE HOWARD	2154 AVP
PHILLIPS EARLE	2611 ATT	ROBINSON FRANK	2081 AVP	SHERMAN KEITH	611 AVP
PHILLIPS EVAN	2012 AVP	ROELKER STEPHANIE	2088 AVP	SHETRON RICHARD	2156 AVP
PIERCE SHARON	3245 ATT	ROGERS MIKE	2092 AVP	SHEUMAKER ROD	314 AVP
PIERSON CINDY	922 AVP	ROGOV ROBERTA	657 AVP	SHIELDS RICKY	3146 ATT
PIERSON ROBERT	934 AVP	ROLLER J.A.	2605 ATT	SHIELDS RUTH	3147 ATT
PIETRUSZKA RAY	3090 ATT	ROLLINS REBECCA	2939 ATT	SHIFFMAN STUART	2923 AVP
PIKELNY BRIAN	3057 ATT	ROMALEWSKI ROBERT	2706 ATT	SHILLING LAYNE	3354 ATT
PILLOW DIANNA	2494 ATT	ROPER BILL	25 AVP	SHIMMELL JOHN	2592 ATT
PILVINIS JAMES	2015 AVP	ROSA AL DE LA	3077 ATT	SHOCKLEY DAVID	249 AVP
PINAKA BOB	2619 ATT	ROSE-TURNER CLAINDA	3227 ATT	SHORT MICHIKO	957 AVP
PINSKER LAURIE	2018 AVP	ROSENBERG ANDREA	2783 ATT	SHORT MICHIKO	2824 ATT
PIZZINI KEN	2910 AVP	ROSENBERG JOEL	649 AVP	SIBLEY JANE	55 AVP
PLATT JOHN	2020 AVP	ROSENBERG ROBERT	50 AVP	SICLARI JOE	484 AVP
PLUMLEE GARY	478 AVP	ROSENFELD SUE-RAE	2100 AVP	SIDERS ELLEN	2165 AVP
POOLITSCH CAROL	910 AVP	ROSENSTEIN JACK	2102 AVP	SIEGEL DANA	691 AVP
POHL FREDERIK	2847 AVP	ROSS BRADLEY	2105 AVP	SIEGLING CAROL	1121 AVP
POLLNER PRISCILLA	2021 AVP	ROSS SUSAN	2106 AVP	SIGEL ANDREW	2168 AVP
POMERANZ JOHN	2022 AVP	ROSS WALLY	2107 AVP	SILVA DAVE	3099 ATT
PORTER CAROL	2713 ATT	ROSS-MANSFIELD LINDA	2108 AVP	SILVA MARCIA	3100 ATT
POTT KATHERINE	3226 ATT	ROTH LESLIE	2109 AVP	SILVERBERG ROBERT	2169 ATT
POTTER D. DAVID	817 AVP	ROTH STEFAN	3246 ATT	SILVERSTEIN NORMA	2930 AVP
POURNELLE GUEST #1 JERRY	2473 ATT	ROME ERIC	268 AVP	SILVERSTEIN RON	2931 AVP
POURNELLE GUEST #2 JERRY	2474 ATT	ROWLAND VALERIE	2598 ATT	SILVERTON CAROL ANN	505 AVP
POURNELLE GUEST #3 JERRY	2475 ATT	ROY DAVID	2112 AVP	SIMICICH DEBRA	954 AVP
POURNELLE GUEST #4 JERRY	2476 ATT	RUBASKY MARY	2800 ATT	SIMICICH NICK	2170 AVP
POURNELLE JERRY	2471 ATT	RUBASKY TOM	2801 ATT	SIMILA CHRISTI	3291 ATT
POURNELLE JERRY (MRS.)	2472 ATT	RUBIN STEPHANIE	2484 ATT	SIMILA SLEEPY HAWK	3292 ATT
POWELL CELIA	3372 ATT	RUFFA GREGORY	428 AVP	SIMMONS DEBYE	3151 ATT
POWELL DAVID LEE	3168 ATT	RUH LAWRENCE	2115 AVP	SIMON KENNETH	439 AVP
POWELL JIM	2029 AVP	RUSH, II EDMUND	482 AVP	SIMPSON EVELYN	2172 AVP
PRATT ROBERT	2034 AVP	RUSHTON MEREDITH	2116 AVP	SISK TERRY	2465 ATT
PRESTON JANICE	1063 AVP	RUSSELL RICHARD	89 AVP	SKELTON DANIEL	2621 ATT
PRESTON RICHARD	1032 AVP	RYAN CHARES	3198 ATT	SKELTON TERENCE	2622 AVP
PRICE AUDREY	2900 AVP	RYAN CHARLES	3199 ATT	SKENE FRAN	952 AVP
PRICE GEORGE	2762 ATT	RYAN MARY	3200 ATT	SLADE JOHN	47 AVP
PRICE MARY	2036 AVP	RYAN THOMAS	3201 ATT	SLEIGHT PETER	2183 AVP
PRICE-WHELAN ALEXA	2901 AVP	RYBA SUSAN	2117 AVP	SMART WALLY	948 AVP
FRITZ KATHRYN	2479 ATT	RYONOLDS DONALD	3134 ATT	SMITH BETTY	3006 ATT
FRITZ LEWIS	2478 ATT	SACHTER LOUISE RUTH	2118 AVP	SMITH BRIAN	109 AVP
PROCTOR CHARLOTTE	235 AVP	SACKETT KARL	1043 AVP	SMITH CAROL TRIPPLET	3027 ATT
PROKSCH LAWRENCE	3346 ATT	SACKS ROBERT	2119 AVP	SMITH CHERYL	2962 AVP
PRONI DONNA	2039 AVP	SADDLER WILLIAM	1041 AVP	SMITH CLAUDE	3005 ATT
PRONI TULLIO	2038 AVP	BAKERS DON	2120 AVP	SMITH DONNA	1128 AVP
PROPHET FRED	753 AVP	SALOHON RON	2693 ATT	SMITH JOSEPH	2503 ATT
PRUITT TIMOTHY	2040 AVP	SANDERS DEBRA	2121 AVP	SMITH KATHRYN	2188 AVP
PUDDISTER JANET	2894 AVP	SANDERS DREW	2122 AVP	SMITH LEAH	3131 ATT
PUBLISI CLAUDINE	3278 ATT	SANDERS KATHY	2123 ATT	SMITH LESLIE	2190 AVP
PULLER MARTIN	3263 ATT	SANDERSON SUE	918 AVP	SMITH LORRAINE	3072 ATT
QUADE ERNIE	2784 ATT	SANDLER RICHARD	2124 AVP	SMITH LUCY	2720 ATT
QUADE PAT	2785 ATT	SANDS KATHY	2125 AVP	SMITH MICHAEL	2191 AVP
QUIRK NATHALIA	2624 ATT	SANDS LEO	2126 AVP	SMITH NICK	1129 AVP
RACHLIN ALAN	2041 AVP	SANDUSKY MARTHA	3094 ATT	SMITH NICK	3028 ATT
RADAN CYNTHIA	2781 ATT	SANTARA SANDRA	1278 AVP	SMITH PAULA	2192 AVP
RADAN LEWIS	2782 ATT	SAPIENZA, JR. JOHN	665 AVP	SMITH RANDAL	2886 AVP
RALPH PATRICK	1122	SARGENT GENE	2128 AVP	SMITH REBECCA A.C.	321 AVP
RANSON PEGGY	3362	SATTERFIELD DALE	3108 ATT	SMITH ROSIE	2936 ATT
RAPKIN ARIANA	2047 AVP	SATTERFIELD JIM	72 AVP	SMITH SALLY	2504 ATT
RAPKIN JOAN	2048 AVP	SATTERFIELD SUSAN	73 AVP	SMITH SHARON	3117 ATT
RAPKIN LIDRAH	2049 AVP	SAUER KURT	2129 AVP	SMITH TEVIS	2964 AVP
RAPKIN MYRON	2050 AVP	SAVILLE GORDAN	2882 AVP	SMITH UICKY	453 AVP
RASMUSSEN KARL	2051 AVP	SAYRE CAROLYN	2606 ATT	SMITH VICTORIA	437 AVP
RATTI DAVID	2052 AVP	SBARSKY SHARON	56 AVP	SMITH WILLIAM	2721 ATT
RAY MICHAEL	1117 AVP	SCHAFFER DAVID	2130 AVP	SMITH, II RICHARD	3132 ATT
RAYMOND MICHAEL	2790 ATT	SCHAFFER KAREN	1042 AVP	SMOIRE LEE	2195 AVP
REAM DAVID	2054 AVP	SCHAEERS MARGARET	3299 ATT	SNODGRASS MILINDA	2696 ATT
REDDEN JOHN	2059 AVP	SCHAEERS RANDY	3301 ATT	SNYDER DEBORAH M	1475 AVP
REDMAN KENNETH	2837 AVP	SCHERER STEVE	2487 ATT	SNYDER HEIDI	2917 AVP
REED DENNIS	826 AVP	SCHILLING BEN	136 AVP	SNYDER JOHN	1062 AVP
REED WANDA	827 AVP	SCHLIEF GUEST OF	2874 AVP	SNYDER WENDY	2937 ATT
REICHERT LESLIE	2061 AVP	SCHLEEF STEVE	2873 AVP	SOLOMON MICHELE JAYE	2199 AVP
		SCHLEICH JIM	2133 AVP	SOMMERS, JR. ROBERT	3370 ATT

HANDICAPPED ACCESS QUESTIONNAIRE

Please fill out and mail this form to me (see address on reverse); it will help me to help you. I will drop you a note within 6 weeks of receiving this form, so you'll know I got it. If you know anyone who is attending Nolacon II and has a physical impairment which might prevent them from filling out this form, please help them. Check or fill out whatever reply is appropriate.

REGISTRATION: Name _____ Memb.# _____

Address: _____

City, STATE, Zip: _____

Registering with me will be: _____

Address (if different): _____

SPECIAL PUBLICATIONS:

I will need the (__ Braille; __ OverSize Print [OSP]; __ Cassette format Talking Book [CfTB]) of the (__ Progress Reports; __ Program Book; __ Short Form Pocket Program; __ Long Form Pocket Program; __ Braille map of the Hotels).

EQUIPMENT:

I will (__ need; __ be bringing) a (__ wheelchair; __ 3-wheeler[type _____]; __ Occasional help; __ Companion Animal) for (__ a short time; __ duration of the con). Other _____

AMERICAN SIGN LANGUAGE:

I will need an ASL signer at (__ Awards; __ Masquerade/s; __ GoH Speeches; __ Opening Ceremonies; __ Closing Ceremonies; __ Other _____)

SPECIAL SEATING:

I will need seating for (__ vision-impaired; __ lip reader; __ ASL sign reader; __ wheelchair; __ footstool; __ me and: __ my aide; __ my family [__ how many]) at: __ Awards; __ Masquerade/s; __ GoH Speeches; __ Opening Ceremonies; __ Closing Ceremonies; __ Other _____

NOTE: We do not wish to separate parents from babes-in-arms or little ones. But kids, if you're old enough to travel without a baby-sitter, you're old enough to find your own seat.

MISCELLANEOUS:

I will also need help with _____
__ I'm a convert! Recently fell/hit by car/other and am new at this game, so I'll need all the tips you can give me!

VOLUNTEERS/GOPHERS

ASL: I would like to interpret at (__ Awards; __ Masquerade/s; __ GoH Speeches; __ Opening Ceremonies; __ Closing Ceremonies; __ Other _____)

GOPHER: I am willing (__ to work as a "strong body"; __ to work [please note my physical limitations _____])

Most gopher help will be needed the day before & the first day of the con.

PERFORATED EDGE - TEAR CAREFULLY - PERFORATED EDGE

MEDICAL QUESTIONNAIRE

Please fill out this form and return it to us, so we can have the following information ready to print on the back of your membership badge. In case of an emergency if you're unconscious, this information could save your life.

Name: _____

Hotel & Room #: _____

Medications being taken (Prescription & over-the-counter): _____

Medication Allergies: _____

IN EMERGENCY, CONTACT: _____

at the Con (name & room #): _____

Personal Physician & Phone: _____

FOLD HERE FIRST



FOLD HERE NEXT

FROM: _____

PLACE
STAMP
HERE

TO: NOLACON II
P. O. Box 308
Lebanon GA 30146-0308

ATTN: Access Dept.

(staple here)

ATTENDING

SOUKUP MARTHA 1054 AUP
 SPANGLER RANDAL 3067 ATT
 SPEAKE SCOTT 3349 ATT
 SPEAR CYNTHIA 703 AUP
 SPEARMAN CHARLES 2895 AUP
 SPEARMAN STEPHANIE 2896 AUP
 SPENCE ROB 2201 AUP
 SPENCER HENRY 2202 AUP
 SPRINGS CAROL 750 AUP
 SPRINKLE B.K. 2668 ATT
 ST. JOHN DAVE 2432 ATT
 STADLER MARK 716 AUP
 STALEY DALE 953 AUP
 STALEY SHERYL 966 AUP
 STANDLEE KEVIN 2211 AUP
 STANLEY CONNIE 2212 AUP
 STANLEY JOHN 2444 ATT
 STARK DONALD 2214 AUP
 STARR ERICA 2215 AUP
 STARR GARY 3092 ATT
 STEARNS ADRIENNE 2216 AUP
 STEARNS FREDA 2217 AUP
 STEARNS ROBERT 2218 AUP
 STEFFEY CHERRY 2845 AUP
 STEFL SUZI 2220 AUP
 STEIN MIKE 712 AUP
 STEINBERG TOM 3286 ATT
 STEINKAMP JOYCE 2412 ATT
 STEINKAMP MRS. WM 2411 ATT
 STEMBOL LEIF 2224 AUP
 STEPHEN ALAN 2225 AUP
 STEPHENSON ROBERT 963 AUP
 STERN DEBBIE 2462 ATT
 STERN DON 2461 ATT
 STERN EDITH 2228 AUP
 STERN TOM 959 AUP
 STEUP DAVE 2587 ATT
 STEUP PEGGY 2588 ATT
 STEVENS JEFFERY 3093 ATT
 STEVENS MARK 2662 ATT
 STEVENS MARK, GUEST 1 2663 ATT
 STEVENS MILT 775 AUP
 STEWARD JAMES 2229 AUP
 STEWARD SUZETTE 2230 AUP
 STEWART DAVID 3244 ATT
 STEWART VALERIE 2946 ATT
 STILES ELAINE 2233 ATT
 STILES RANDAL 2942 ATT
 STILES STEVE 2234 ATT
 STINSON FLOYD 2991 AUP
 STOCKER DANIEL 2683 ATT
 STOCKER DAVID 2682 ATT
 STOCKER JACK 327 ATT
 STOCKER KATIE 2684 ATT
 STONE BARBARA 2947 ATT
 STONE MIKE 526 AUP
 STORA JONI 325 AUP
 STRANG WILL 2938 ATT
 STRAUSS ERWIN 33 AUP
 STREULI CANDY 1127 AUP
 STRICKLAND SHEILA 500 AUP
 STRINGER NORMA 3073 ATT
 STUBBLEFIELD VIRGINIA 2239 AUP
 STUBBS HARRY 2425 ATT
 STUBBS MARY 2426 ATT
 STUBBS SAM 2240 AUP
 STUCKEY LINDALEE 2242 AUP
 STUTTLE JAMES 3074 ATT
 STUTTS ROSANNE 3357 ATT
 STYONS JESSICA 3167 ATT
 SUBLETTE CAREY 2860 AUP
 SULLIVAN BRIAN 3157 ATT
 SULLIVAN BERT 3026 ATT
 SULLIVAN PATRICK 3158 ATT
 SULLIVAN TARA 2928 AUP
 SUMMERSIDE NATE 2243 AUP
 SUNDEN, II ED 200 AUP
 SUSSMAN VALERIE 2244 AUP
 SUTTON BILL 450 AUP
 SWAIN ALAN 3217 ATT
 SWANSON ANDERS 2246 AUP
 SWENSKI JOANNE 2733 ATT
 SWITT DINA 3335 ATT
 SZCZEPANIAK III JOSEPH 2251 AUP
 TALLAN MICHAEL 2253 ATT
 TARR JUDITH 3360 ATT
 TATE JAMES 223 AUP
 TATTAN MARTHA 2526 ATT
 TATTAN MICHAEL 2525 ATT
 TAUBENECK SUSAN 2681 AUP
 TAYLOR BEATRICE 3204 ATT
 TAYLOR BYRON 186 AUP
 TAYLOR CHARLENE 2256 AUP
 TAYLOR DAVE 2257 AUP
 TAYLOR JOHN 2850 AUP
 TAYLOR MICHAEL 3053 ATT
 TAYLOR PAT 188 AUP
 TAYLOR PATRICIA 2260 AUP
 TAYLOR SANDRA 2261 AUP
 TAYLOR TOMMY 2262 AUP
 TAYLOR TONI 2997 ATT
 TEEMS JAMES 2263 AUP
 TENER ROGER 2264 AUP
 TENER ROGER GUEST OF 2794 ATT
 TERRY CECE 124 AUP
 TERRY FRANK 126 AUP
 TESSER GARY 1070 AUP
 THAMES TERRI 2756 ATT
 THIEL VANDA 834 AUP
 THIESEN PETER 3171 ATT

THOKAR GREGORY
 THOMAS JOHN
 THOMPSON CAROLYN
 THOMPSON DON
 THOMPSON KATHLEEN
 THOMPSON KIRK
 THOMPSON, JR. DAVID
 THOMSON AMY
 THOMSON BECKY
 THOMSON JOHN
 THORNHILL IRA
 THORNHILL MIKE
 THORNHILL RIPLEY

430 AUP
 432 AUP
 1058 AUP
 1056 AUP
 501 AUP
 499 AUP
 3014 AUP
 442 AUP
 2272 AUP
 2273 AUP
 947 AUP
 2851 AUP
 944 AUP

TIDWELL BOB
 TIFFT JENNIFER
 TIHOR STEPHEN
 TINKLEY ALICE
 TIPTON KIMIYE
 TODD MIKE
 TOMAINO SAMUEL
 TOMORROW BOOKS #1
 TOMORROW BOOKS #2
 TOMORROW BOOKS #3
 TOMORROW BOOKS #4
 TOMORROW BOOKS #5
 TOMPKINS DOROTHY GUIN

1061 AUP
 805 AUP
 2275 AUP
 2616 ATT
 951 AUP
 37 AUP
 2279 AUP
 2578 ATT
 2579 ATT
 2580 ATT
 2581 ATT
 2582 ATT
 2641 ATT



March 24-27, 1988

Twenty Five Authors and Artists *
Nine major SF & F films in 35mm in
a 2500 seat auditorium * A Dealer's
Room with more than 100 tables * an
Art Show and Auction * Banquet *
Masquerade Ball * Quest * Day Films
and Videos * and much more...

The Southwest's Largest
Science Fiction & Fantasy
Convention



For more information, write:
 AggieCon 19
 TAMU
 Box J - 1 - MSC
 College Station, TX 77844

ATTENDING

TOMPKINS KRIS	3231 ATT	WEINER TONI	2346 AUP	WILSON RICHARD	2818 ATT
TOOMI JURI	2282 AUP	WEINGART DAVID	2347 AUP	WILSON ROLF	2501 ATT
TOWNSEND MICHAEL	194 AUP	WEINGART ELLEN	2348 AUP	WILSON WILLIAM	2975 AUP
TRAUB BEVERLY	3125 ATT	WEINSTEIN ELLIOT	793 AUP	WINGEIER ALAN	3160 ATT
TRAUTH MARIE-JEANNE	2714 ATT	WEISS GAIL	2349 ATT	WINGEIER CATHY	3161 ATT
TRAUTH PAUL	2715 ATT	WEISSINGER ROBERT	2350 AUP	WINTLER ROBERT	2379 AUP
TRAUTMAN SUSAN	3109 ATT	WELLER EXCEEDINGLY	613 AUP	WIRTH DAN	2786 ATT
TRAVIS DAVID	2285 AUP	WELLS GEORGE	221 AUP	WIRTH DOUG	282 ATT
TREBING MARK	763 AUP	WELLS JANET	3059 ATT	WITZANY DAVID	2380 AUP
TREND GREGG	2287 AUP	WELLS LETITIA	3058 ATT	WOJCHIK SUSAN	3018 ATT
TROJAN BILL	2290 AUP	WELLS MARTHA	2607 ATT	WOLANSKY TARAS	3318 ATT
TROJAN BILL	2849 AUP	WELLS MARTHA	2747 ATT	WOLCOTT ANDY	3285 ATT
TROUT STEVEN	320 AUP	WELLS THOM	2353 AUP	WOLF ANNE	2967 AUP
TROUVERE ANDELIQUE	764 AUP	WENSHE LEONARD	3009 ATT	WOLF JOYCE	2968 AUP
TRUESDALE PAMELA	2970 AUP	WERNER ELLIOTT	2354 AUP	WOLF KATHERINE	2969 AUP
TRUMPLER MARK	2291 AUP	WESTERVELT BRAD	2701 ATT	WOLF MARCIA	142 AUP
TUCKER NANCY	3271 ATT	WESTON PETER	3216 ATT	WOLFMAN MARV	2417 ATT
TUMMINELLO CHARLES	839 AUP	WEXFORD MARYE LYNN	296 AUP	WOLKOFF LEWIS	962 AUP
TUREK LESLIE	2293 AUP	WHALEN JIM	615 AUP	WOOD ED	272 ATT
TURNER JAMES	452 AUP	WHEELER STEVE	3063 ATT	WOOD ELEANOR	3068 ATT
TURNER SHARON	1064 AUP	WHEELER VICKIE	3064 ATT	WOOD JOANN	2737 ATT
TURNER II TRUBIE	960 AUP	WHELAN MICHAEL	2902 AUP	WOOD LAWRENCE	2738 ATT
TURTLEDOVE HARRY	2876 AUP	WHITE JOHN	2357 AUP	WOODIN MIKE	2507 ATT
TURTLEDOVE LAURA	2877 AUP	WHITE LAURINE	2358 ATT	WOOSLEY JAMES	535 AUP
TUTIHASI LAURRAINE	2295 AUP	WHITE PHYLLIS	2359 AUP	WRIGHT DEBRA	2385 AUP
UBELHOR TONY	3191 ATT	WHITLEY EVA	232 AUP	WU WILLIAM	192 AUP
UNDERWOOD MARK	3062 ATT	WHITHORE TOM	1074 AUP	YALOW BEN	2387 AUP
VALENTINE GLENN	1052 AUP	WHITTIER SARA JANE	1059 AUP	YARSAWICH JEAN	319 AUP
VALRAND CARLOS	2296 AUP	WICKER GUY	2364 AUP	YASUTAKE CORLISS	2627 ATT
VAN ALLEN PAH	1414 AUP	WICKES DIANNE WICKES	949 AUP	YEAGER JACE	2389 ATT
VAN CAMP JAMES	937 AUP	WICKSTROM LOIS	2365 AUP	YERGER CYNDY	2392 AUP
VAN CAMP SHELLEY	942 AUP	WIDMER BRENT	2617 ATT	YOUNG CECIL	2394 AUP
VAN DEESE LEE	2298 AUP	WIDMER CHRISTINE	2618 ATT	YOUNG CHRIS	2943 ATT
VAN DEN AKKER N.	2764 ATT	WILBANKS CARAN	2932 AUP	YOUNG JACK	825 AUP
VAN DOMMELDEN ERICA	2725 ATT	WILCOX ELIZABETH	3311 ATT	YOUNG SUSAN	824 AUP
VAN DORN DOUG	1126 AUP	WILCOXEN JOE	443 AUP	ZAK GWEN	94 AUP
VAN HARTESVELDT MARY ANN	579 AUP	WILLIAMS CHARLIE	537 AUP	ZAKEM JOEL	305 AUP
VAN HORNE TOM	2416 ATT	WILLIAMS JUDY	580 AUP	ZARLOW WILLOW	2826 ATT
VAN NAME BETSY	1048 AUP	WILLIAMS PATTI	2370 AUP	ZEIGER BARRY	436 AUP
VAN NAME MARK	2299 AUP	WILLIAMS PAUL	3230 ATT	ZELMANOVICS GARY	2978 AUP
VAN NAME MARY	2300 AUP	WILLIAMS PERRY	190 AUP	ZENK HARDO	2400 AUP
VAN TILBURG RAYMOND	669 AUP	WILLIAMS RONDINELLA	751 AUP	ZETTERBERG JULIE	2401 AUP
VAN TOORN ANGELIQUE	2450 ATT	WILLIAMS, III DAVID	752 AUP	ZIELKE BECKY	2403 AUP
VAN TOORN KEESKEBS	2449 ATT	WILLIAMSSON JACK	2372 AUP	ZIELKE BILL	575 AUP
VANDORN BRETCHEN	3298 ATT	WILLIS DOROTHY	2373 AUP	ZIELKE DARRYL	532 AUP
VARLEY JOHN	773 AUP	WILLIS FRANCES	958 AUP	ZIELKE ROBERT	2405 AUP
VARNER STEVEN	2304 AUP	WILLIS JOHN	956 AUP	ZIELKE TRACY	2404 AUP
VARTANOFF ELLEN	1046 AUP	WILSON CATHERINE	1125 AUP	ZOUGHA FREDERICK	2406 AUP
VAUGHAN DONALD	2974 AUP	WILSON JANET	2817 ATT	ZYGOWICZ DIANE	2927 AUP
VAUGHAN NANETTE	2975 AUP	WILSON JANET	2830 AUP	ZYGOWICZ KARIN	2600 ATT
VEAL THOM	2307 AUP	WILSON MARY	2869 AUP	earon sally	1130 AUP
VENNER JASON	2853 AUP		2502 ATT		
VERBA JOAN MARIE	2312 AUP				
VEROEN NOLA	2391 AUP				
VERMEIRE PAT	938 AUP				
VICK, JR. CECIL	667 AUP				
VICTOR BARBARA	2929 AUP				
VIRZI DENNIS	680 AUP				
VOGEL ALLYN	2508 ATT				
VOGT ELAINE	3001 ATT				
VOGT SUSIE	3002 ATT				
VOROS JUDY	2986 AUP				
VOROS TODD	2990 AUP				
VORPE JACKIE MORRIS	3095 ATT				
VORPE RICHARD	3096 ATT				
VUL-CON 1	2771 ATT				
VUL-CON 2	2772 ATT				
VUL-CON 3	2773 ATT				
VUL-CON 4	2774 ATT				
WACHTER SUZANNE	3075 ATT				
WADA MICH	3247 ATT				
WAGER KIRAN	2318 AUP				
WAGNER KARL	940 AUP				
WALD DICK	2625 ATT				
WALD LINDA	2321 ATT				
WALD ROBERTA	2626 ATT				
WALGAMOTTE SHANNON	128 AUP				
WALKER KATHY	2323 AUP				
WALKER STEPHEN	2324 AUP				
WALKMAN JACOB	2322 AUP				
WALLBANK MARY	429 AUP				
WALLBANK TOM	2326 AUP				
WALLER KRISTIN	2327 AUP				
WALSH DONALD	945 AUP				
WALSH MICHAEL	2330 AUP				
WALSH RAY	2804 ATT				
WALTER CHARLES	3082 ATT				
WARD CHARLES	2332 AUP				
WARD DALROY	2333 AUP				
WARD JACQUELINE	2854 AUP				
WARD MARSHA	2971 AUP				
WARD MIKE	502 AUP				
WARD MURRAY	3169 ATT				
WARREN ALAN	3110 ATT				
WARREN DAVID	2822 ATT				
WARREN JAMIE	2802 A				
WARREN SUE-BETH	2436 AT				
WARREN WALT	2637 ATT				
WASHBURN ADRIAN	198 AUP				
WASHINGTON JULIE	3164 ATT				
WATKINS JACKIE	2337 AUP				
WATSON PAUL	108 AUP				
WATTS ERIC	2340 AUP				
WATTS PETER	2724 ATT				
WEBBERT DOREEN	792 AUP				
WEBBERT JAMES	2435 ATT				
WEBSTER DONALD ALAN	2998 ATT				
WEDELL DAVID	3365 ATT				
WEIN LEN	698 ATT				
WEINBERG DAVID	2345 AUP				

SUPPORTING MEMBERS

ABELKIS PAUL	1131 SUP	BOSTER ALEX	1224 SUP
ABRAMOWITZ ALYSON	1134 SUP	BOSTICK ALAN	1225 SUP
ACKROYD JUSTIN	1135 SUP	BOTHNER PER	1226 SUP
ADLER ADINA	1137 SUP	BOURIC WALT	1228 SUP
AHSH F. L.	1452 SUP	BRADLEY CHARLES	1232 SUP
AKERS LESLIE STRANG	1141 SUP	BRAITHWAITE MICHAEL	3240 SUP
ALBASI GLORIA LUCIA	2993 SUP	BRAND WILLIAM	1233 SUP
ALEXANDER ROBIN	1144 SUP	BRAITHMAN DAVID	1235 SUP
ALLEN GUY	1145 SUP	BRETNEY RICHARD	1239 SUP
ALLEN ROBERT HARRY	1146 SUP	BRICKLE W.H.	1240 SUP
ALVAEZ JANET	1147 SUP	BRISBEN JACK	1243 SUP
ALVES JAMES	1148 SUP	BROWN BILL	1245 SUP
ANDERSEN YNGVE	1150 SUP	BROWN BRIAN EARL	1246 SUP
ANDREW LOLA	1156 SUP	BROWN JAMES	1248 SUP
ANDREWS ARLAN	1157 SUP	BROWN JORDAN	1249 SUP
ANDREWS GEORGE	1158 SUP	BROWN WILLIAM	3244 SUP
ANDREWS JOYCE	1160 SUP	BUCHAR MARIA	1252 SUP
APPELBAUM JAN	1162 SUP	BUCHANAN GINJER	1253 SUP
ARAFIAN TAMMY	1163 SUP	BURGER JOANNE	1256 SUP
ATTIYA YOEL	1167 SUP	BURKE CARL	1257 SUP
AUSTIN ALICIA	1169 SUP	BURNHAM CRISPIN	1258 SUP
AVERY B. SHIRLEY	1170 SUP	BURROUS ALLAN	2565 SUP
BABICH KAREN	1171 SUP	BURTON GERALD	1259 SUP
BAILEY J. ADAM	1173 SUP	BUTTERFIELD DAVID	1263 SUP
BARKLEY C.H.	1181 SUP	CADIGAN PAT	1265 SUP
BARRY MIKKI	1184 SUP	CALLAHAN CHRIS	1268 SUP
BARTLETT MARIE	1187 SUP	CANTOR MARTY	1270 SUP
BARTTER MARTHA	1188 SUP	CANTOR ROBBIE	1271 SUP
BAUER FRED	1189 SUP	CAPLAN JACK	1272 SUP
BAUMANN KURT	1190 SUP	CAREY DOUGLAS SCOTT	1274 SUP
BECK HENRY	1193 SUP	CAREY MARY PIERO	1275 SUP
BEHNKE JIM	1196 SUP	CAREY STEPHEN	1273 SUP
BELMANS PAUL	1198 SUP	CARLETON GORDON	1276 SUP
BENFORD GREGORY	1200 SUP	CARLSEN ANN	1277 SUP
BERCARICH DORIS	1202 SUP	CARLSON ROSE	1281 SUP
BERG JOHANNES	1203 SUP	CARRICO E. ANNETTE	1283 SUP
BERGER THERESA	1204 SUP	CARROLL CATHY	1284 SUP
BERTELSEN RICHARD	1206 SUP	CARSON DAVID	1285 SUP
BETHEL KIMBERLY	1207 SUP	CARSON KATHERINE	1286 SUP
BILMES JOSHUA	1208 SUP	CARTWRIGHT DIANA	1288 SUP
BIRKHEAD SHERYL	1209 SUP	CARTY SHARON	1289 SUP
BISOEIER CRAIG	1211 SUP	CARUTH JANET SUE	1290 SUP
BLAKE DOUGLAS	2678 SUP	CASPER SUSAN	1291 SUP
BLANCHARD N. TAYLOR	1214 SUP	CASWELL ROB	1292 SUP
BLISS DAVID	1215 SUP	CECIL ANN	1293 SUP
BLOM SUE	1216 SUP	CENTER WILLIAM	1294 SUP
BLUTE MARY-RITA	1219 SUP	CHAPDELAINE, JR. PERRY	1295 SUP
BOMACZUK TED	1221 SUP	CHAPMAN GLENN	1296 SUP
BOLTON PHILIP	1222 SUP	CHAUVIN CY	1299 SUP

SUPPORTING

CHERNOFF CYNTHIA 1302 SUP
 CHESHIRE DOUGLAS 1303 SUP
 CHESTERSON DAVID 1304 SUP
 CHILDS LEE 2966 SUP
 CLARK DAVID 1307 SUP
 CLARK MEL 1308 SUP
 CLAWSER CAROL 1309 SUP
 CLEAVER FRED 1310 SUP
 CLIFFORD BARBARA 1311 SUP
 CLIFFORD RUIE LUE 1313 SUP
 COGER GRETA 1317 SUP
 COHEN ELI 1319 SUP
 COHEN REGINA 1322 SUP
 COLBY ROBERT 1324 SUP
 COLEMAN FRANKLIN 1326 SUP
 COLLIER EARLYNN 1329 SUP
 COLLINGWOOD SUSAN 1330 SUP
 COLWELL ELLEN 3153 SUP
 COMBS DONALD 1331 SUP
 CONDER CARY ANNE 1332 SUP
 CONNERY EDWARD 1333 SUP
 CONRY SUSAN 1334 SUP
 COOK NORMAN 1335 SUP
 COOK-ATTIYA BARBARA 1336 SUP
 COOKSON ROBIN 1337 SUP
 COPELAND RICHARD 1339 SUP
 CORNWELL SUE 1340 SUP
 CORRENS VINCENT 1341 SUP
 COWPERTHWAIT RICHARD 1345 SUP
 CRABB TERRI 1346 SUP
 CRAGO EDWARD 1347 SUP
 CREYRAVEN CIN 1349 SUP
 CROCKETT CATHERINE 1351 SUP
 CROSS DEBBIE 1353 SUP
 CROWELL-DAVIS SHARON 1355 SUP
 CROWELL-DAVIS WILLIAM 1356 SUP
 CROWTHER J.M. 1357 SUP
 CUNNINGHAM SANDRA 1358 SUP
 D'AURIA ADAM 1362 SUP
 DAILY BEN 1363 SUP
 DAKINS MARK 1364 SUP
 DANIEL HUGH 1365 SUP
 DANN MICHAEL B. 1368 SUP
 DASHOFF JUNI BRILL 1369 SUP
 DASHOFF TODD 1370 SUP
 DAVIS AUERY 1372 SUP
 DAVIS JOEL 1374 SUP
 DAVIS KEVIN 1375 SUP
 DAVIS ROBIN 1374 SUP
 DAY DONALD LEE 2870 SUP
 DEBARO MARK 1377 SUP
 DEEM JEANNIE 1378 SUP
 DEEM LARRY 1379 SUP
 DELAURENTIS LINDA 1381 SUP
 DELL LORI 1382 SUP
 DELL-AQUILA LARRY 1383 SUP
 DEMMER JEANNE 1384 SUP
 DEVAUGHAN BILL 1386 SUP
 DIGBY TOM 1392 SUP
 DIGGS PAT 1394 SUP
 DIMASI JAN 1398 SUP
 DIMASI NICK 1397 SUP
 DIMODICA GENE 1399 SUP
 DITCHMAN JOHN 1400 SUP
 DONAT MICHELLE 1401 SUP
 DONET JOHN 1402 SUP
 DONIGAN JOHN 1404 SUP
 DORKUM PHIL 1405 SUP
 DORMER PAUL 1406 SUP
 DORMIRE ALAN SENMARSH 1407 SUP
 DOTY MICHELLE 1410 SUP
 DOUCETTE DOUGLAS 1411 SUP
 DOUGLAS JOHN 1412 SUP
 DU PAT-LOCKWITZ BETTY 1416 SUP
 DUBEY RACHELLE S. 1417 SUP
 DUCK DARIEN 3325 SUP
 DURANT MICHAEL 1420 SUP
 DYAR ALLYSON M.W. 1421 SUP
 DYAR DAFYD NEAL 1422 SUP
 EBER ROBERT 1427 SUP
 ECKLAR JULIA 1428 SUP
 EDGEWORTH DOROTHA 1429 SUP
 EISENSTEIN ALEX 1437 SUP
 EISENSTEIN PHYLLIS 1436 SUP
 EIVINS THOMAS 1438 SUP
 ENEY DICK 1443 SUP
 ENGEL JEAN 1444 SUP
 ENGEL THEODORE 1445 SUP
 ERICHSEN KURT 1447 SUP
 EVANS JULIE 1449 SUP
 EVANS MARK 1450 SUP
 EVERLING MICHAEL 1451 SUP
 FAIRBANKS J.D. 1454 SUP
 FARMER ANDREW 1458 SUP
 FARMER MARJORIE 1461 SUP
 FARMER NANCY 1457 SUP
 FARMER RANDALL 1456 SUP
 FARNHAM LYNN 1462 SUP
 FARR BRUCE 1463 SUP
 FARWELLI CINDY 1465 SUP
 FEIN ADRIENNE 1467 SUP
 FEIN COLIN 1466 SUP
 FELDMAN PATRICIA 1469 SUP
 FELSKO ROBERT 1470 SUP
 FERGUS OEDRGE 1472 SUP
 FERGUSON BRYAN 1473 SUP
 FERGUSON ROY 1474 SUP
 FERON MICHEL 3222 SUP
 FERREE RICHARD 1476 SUP

FINAN ANTHONY 1479 SUP
 FINKELSTEIN ED 1480 SUP
 FITCH DON 1481 SUP
 FITZSIMMONS CATHERINE 1482 SUP
 FLEISCHMANN JOSEPH 1484 SUP
 FLYNT CLIF 1485 SUP
 FONG JOHN 1487 SUP
 FONG KANDY 1488 SUP
 FORD JOHN 1489 SUP
 FOSTER NEIL 1492 SUP
 FOSTER PATRICK 1493 SUP
 FOX RICHARD 1494 SUP
 FRANSON DONALD 1498 SUP
 FRATZ D. DOUGLAS 1499 SUP
 FRIEDMAN JOSHUA 1506 SUP
 FRISBIE ALAN 2563 SUP
 GAINES ROBERT 1511 SUP
 GALLACCI STEVE 1512 SUP
 GARBER GARY 1513 SUP
 GARBER RICHARD 1514 SUP
 GELLMAN RICK 1517 SUP
 GERMOND' GEDOFREY 1520 SUP
 GERSTEIN LINDA 1523 SUP
 GIBBARD CANDIS 1524 SUP
 GIDEON ANNE-MARIE 1525 SUP
 GIDEON RANDALL 1526 SUP
 GILBERT ZELDA 1528 SUP
 GISH TERRY 1532 SUP
 GLASS DIANA 1533 SUP
 GOLD STEVEN 1536 SUP
 GOLDBERG SETH 1537 SUP
 GOLDENBERG KIM 1538 SUP
 GOLDENBERG SIMON 1539 SUP
 GOLDMAN DIANE 1540 SUP
 GOODIN JOY 1543 SUP
 GOODWIN MICHAEL 1544 SUP
 GORBLEY STEVE 1545 SUP
 GOTTESMAN REGINA 1547 SUP
 GOVAKER DAVID 1549 SUP
 GOWER DAVID 1550 SUP
 GRAHAM, JR. EDW. A. 1552 SUP
 GRANT BILL 1554 SUP
 GRAU RAY 1555 SUP
 GRAY DONNA 1556 SUP
 GREEN DEBORAH 1557 SUP
 GREENE EDWARD 1563 SUP
 GRENZKE, JR. NORMAN 1564 SUP
 GROOT HAROLD 1569 SUP
 GROSSE MERRYL 1571 SUP
 GROSSE JOSHUA 1572 SUP
 GROSSE LUANN 1573 SUP

GRUBBS DAVID 1575 SUP
 GUARDIOLA SUSAN DE 1577 SUP
 GUERNIC BRYAN 1578 SUP
 GUERNIC LAURIE ANN 1579 SUP
 HAGEN MARY 1583 SUP
 HAGEL CRYSTAL 1584 SUP
 HAGER ALLEEN 1585 SUP
 HAGERMAN MARK 1586 SUP
 HAHN 1587 SUP
 HALL JOANNE 1589 SUP
 HALL JOHN 1588 SUP
 HALL MARCUS 2561 SUP
 HALTERMAN DAVID 2551 SUP
 HAMMON SANDRA 2553 SUP
 HAMMOND SUSAN 2554 SUP
 HAMPTON ELAINE 2555 SUP
 HANFIELD CAREY 2558 SUP
 HANSEN, II HUGH CHRISTIAN 1592 SUP
 HANSON-ROBERTS MARY 1593 SUP
 HARNAN JANEL 1595 SUP
 HARPER MICHAEL 2560 SUP
 HARRIS PAT 1600 SUP
 HARRIS ZONKER 1601 SUP
 HARTMAN KIMBERLY 3297 SUP
 HATHAWAY ROSS 1603 SUP
 HAWKINS JANE 1608 SUP
 HECK PETER 1613 SUP
 HELLINGER STUART 1615 SUP
 HENDERSON ARTHUR 1616 SUP
 HENDERSON REBECCA 1617 SUP
 HENDERSON SYDNEY 1618 SUP
 HENRY MARGARET 1620 SUP
 HERKELRATH RANDY CARL 1622 SUP
 HERMAN JACK 1623 SUP
 HERRINGTON DAVID 1624 SUP
 HEUER RAYMOND 1626 SUP
 HEYDT MARIE 1627 SUP
 HIGGINS BILL 1628 SUP
 HINEY STELLA 1632 SUP
 HIRSH IRWIN 1634 SUP
 HIRSHMAN BRET 1635 SUP
 HOFFING JANIS 1637 SUP
 HOKA SHERLOCK 1639 SUP
 HOLMES JEFFREY 1642 SUP
 HOOTON DAVE 1644 SUP
 HOSTO DOUGLAS 1645 SUP
 HOWETH JOHN 1647 SUP
 HUBER CHARLES 1648 SUP

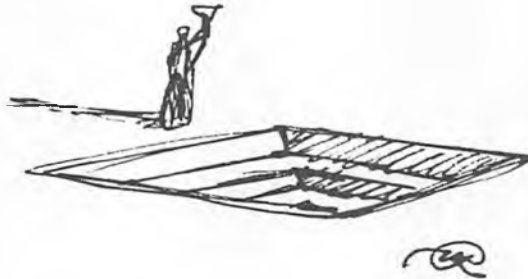


Susan Lynn Toker '87

SUPPORTING

HUDSON STEVE 1651 SUP
 HUNGER JAMIE 1654 SUP
 HURT BARBARA 1656 SUP
 HUSHO JENNIFER 1657 SUP
 HUSTON NED 1658 SUP
 HUTTNER JEANINE 1659 SUP
 HUTTNER JIM 1660 SUP
 HYMAN SARA 1661 SUP
 ILLIG TODD 1662 SUP
 INSLEY PETER 1663 SUP
 INSLEY SHEILA 1664 SUP
 ISAJENKO RITA 1665 SUP
 JACKNOW ALAN 3219 SUP
 JACKOWIAK DIANE 1667 SUP
 JACKSON KATHRYN 1671 SUP
 JACKSON STEVEN 1672 SUP
 JAKUBISIN GAYLE 1674 SUP
 JASEN OLIVIA 1678 SUP
 JENNEMANN LESLIE 1681 SUP
 JENSEN WILLIAM 1683 SUP
 JEWELL JANE 1684 SUP
 JIRA JAMES 1685 SUP
 JOHNSON CULLEN 1687 SUP
 JOHNSON FRANK 1697 SUP
 JOHNSON RYAN 1695 SUP
 JOHNSON TOM 1688 SUP
 JONES BONNIE 1690 SUP
 JONES E. WEBER 1699 SUP
 JONES WAYNE 1702 SUP
 JORDAN DAVID 1703 SUP
 JORDAN JEAN 1704 SUP
 JOSSERAND EARL 1706 SUP
 JULIAN JOHN 1707 SUP
 KABAKJIAN RICHARD 1709 SUP
 KACOR MIKE 1710 SUP
 KAPLOWITZ IRA 1711 SUP
 KAPPESSER PETER 1712 SUP
 KARP JEFFERY 1713 SUP
 KATZ ROGER 1716 SUP
 KAUFMAN GAIL 1717 SUP
 KAUFMANN BARBARA 1718 SUP
 KEATING LAURA 1720 SUP
 KECK MELISSA 1721 SUP
 KEITH GREGORY 1725 SUP
 KENDALL SAM 1727 SUP
 KENIN MILLEA 1728 SUP
 KENT ALLAN 1732 SUP
 KERNES MARK 1733 SUP
 KEYSER RALPH 1734 SUP
 KIDD VIRGINIA 1735 SUP
 KILLIAN SUSAN 1736 SUP
 KINNARD SANDRA 1738 SUP
 KIRBY DAVID 1739 SUP
 KIRKPATRICK SCOTT 1740 SUP
 KLINE JOHN 1743 SUP
 KNOULES MARTHA 1744 SUP
 KNUDSON SVEN 1745 SUP
 KOBE RAYMOND 1746 SUP
 KOBEE SALLY 1747 SUP
 KOLKER RICH 1749 SUP
 KONDOYA HIROSHI 1751 SUP
 KOTT MICHAEL 1752 SUP
 KOVALCIC RICK 1754 SUP
 KPENTZ LAURA 3225 SUP
 KRAMER-ROLLS DANA 1755 SUP
 KUCERA T.G. 1761 SUP
 KURTTZKY ERIC 1762 SUP
 KUTZ MARION 2517 SUP
 KUTZ ROGER 2516 SUP
 KYLE KERRY 3162 SUP
 LAMAR JOHN 1764 SUP
 LANE ARDIS 1769 SUP
 LANE JAMES 1770 SUP
 LARSEN DAVID 1774 SUP
 LATTIN JOSEPH 1778 SUP
 LAURENT BOB 1779 SUP
 LAVIANA DONNA 1781 SUP
 LAWLER JOHANN 1782 SUP
 LEAH YA 1784 SUP
 LECUYER CATHERINE 1786 SUP
 LEE J.M. 1787 SUP
 LEGHORN, JR. STANLEY 1789 SUP
 LEIBOWITZ HOPE 1790 SUP
 LERNER FRED 1791 SUP
 LETTERMANN RICHARD 1792 SUP
 LEVY SUSAN 1793 SUP
 LEWALLEN JOHN 1794 SUP
 LEWALLEN RUTH 1795 SUP
 LEWIS ALICE 1796 SUP
 LEWIS ANTHONY 1797 SUP
 LEWIS SUFORD 1799 SUP
 LEWIS THOMAS 1800 SUP
 LINDBOE WENDY 1808 SUP
 LOCHOWITZ JAMES 1813 SUP
 LONG KATHERINE 1817 SUP
 LOVE J. SPENCER 1819 SUP
 LOW DANNY 1820 SUP
 LOWREY MIKE 1822 SUP
 LUCE TASHANYA 1823 SUP
 LUCE, JR. CHARLIE 1824 SUP
 LUNNEL FRANK 1834 SUP
 LURIE PERRIANNE 1835 SUP
 LUSSEYER JOHN 1836 SUP
 LUTTRELL HANK 1837 SUP
 LYAU BRADFORD 1838 SUP
 LYMAN ALEX 1839 SUP
 LYN-WAITSMAN BARRY 1842 SUP
 LYN-WAITSMAN MARCY 1843 SUP
 LYON RICHARD 1844 SUP
 LYSAUGHT JOHN 1845 SUP

MACLEAN KEVIN 3218 SUP
 MAGEE MIKE 1849 SUP
 MAGILL WILLIAM 1850 SUP
 MAITZ DON 1852 SUP
 MAKIN GARY 3239 SUP
 MALCOLM EDWARD 3236 SUP
 MALCOLM SUSAN MARIE 3237 SUP
 MANN LAURIE 1857 SUP
 MANSHIP CYNTHIA 1859 SUP
 MANSHIP DAVID 1860 SUP
 MARMOR MARK 1861 SUP
 MARSCHAK BETH 1864 SUP
 MARTIN, III THOMAS 1866 SUP
 MASSEY CANDICE 1867 SUP
 MATTHEWS BOB 1871 SUP
 MAULUCCI MARY 1873 SUP
 MAXWELL MICHAEL 1874 SUP
 MAY JEFFREY 1875 SUP
 MAZURANIC KRSTO 1877 SUP
 MCCAULLA MELODY 1879 SUP
 MCCLYMONDS PAULINE 1882 SUP
 MCCORMACK MR. J.C. 1884 SUP
 MCEWEN MARGARET 1885 SUP
 MCGINTY STEVEN 1887 SUP
 MCGOWAN CAROLYN 1888 SUP



MCKENNA MARJORIE 1890 SUP
 MCKENNEY MARY ANN 1891 SUP
 MCKENNEY, JR. CARLTON 1892 SUP
 MCMAHON JOHN 1893 SUP
 MELTON JANN 1898 SUP
 MENDELSON ROBERTA 1901 SUP
 METZGER STEPHEN 1904 SUP
 MICHALS PAUL 1906 SUP
 MILLER DENNIS 1910 SUP
 MILLER SUE 1912 SUP
 MINKOFF SCOTT JASON 1913 SUP
 MINNIS DIANE WRIGHT 1915 SUP
 MITCHELL JENNIFER 3363 SUP
 MITCHELL KAREN 1916 SUP
 MITCHELL, JR. JOHN 3364 SUP
 MOIR LILLIAN 1918 SUP
 MOLITCH CAROLINE 1919 SUP
 MONCURE RCL 1920 SUP
 MOONEY CINDY 1921 SUP
 MOORE MARIAN 1923 SUP
 MOORE PERRY GLEN 1924 SUP
 MORGAN LYN 1927 SUP
 MORHAN JUDY 1930 SUP
 MORHAN MIKE 1932 SUP
 MORNINGSTAR CHIP 1934 SUP
 MORNINGSTON JANICE 1935 SUP
 MORRIS KENDALL 2550 SUP
 MORSE LYNNE ANN 1938 SUP
 MORTON KEITH 1939 SUP
 MOSS JAN 1940 SUP
 MUELLER JIM 1942 SUP
 NALLE ANN 1948 SUP
 NATALIE RON 1949 SUP
 NESFA 1951 SUP
 NEUMARK CRAIG 1952 SUP
 NICHOLAS BEVERLY 1955 SUP
 NICHT SANDRA 1956 SUP
 NICKLEBERRY S.L. 1957 SUP
 NIKKEL K.K. 1959 SUP
 NOLAN PAT 1962 SUP
 NORWOOD MARY 1964 SUP
 NORWOOD RICK 1965 SUP
 O'BRIEN TERRY 1966 SUP
 OBERG GERDA 1968 SUP
 OLANICH CATHERINE 1969 SUP
 OLSON LOUISE 1972 SUP
 OLSON SHIRLEY 1973 SUP
 OLUM KEN 1974 SUP
 ORTLEIB MARC 1976 SUP
 OSAKO MASAHICHI 1978 SUP
 OSAKO MICHIKO 1977 SUP
 OWINGS CAROL ANN 1979 SUP
 P.F.R.C. 1980 SUP
 PARENTE LOIS 1982 SUP
 PARIS SAM 1983 SUP
 PARKER BILL 1984 SUP
 PARRIS 1986 SUP
 PASCUZZI PETE 2903 SUP
 PASSAVOY ANNE 1988 SUP
 PASSAVOY BOB 1989 SUP
 PATROUCH JOE 1990 SUP
 PEARCE BILL 1993 SUP
 PELZ ELAYNE 1996 SUP

PENROSE JAMES 1998 SUP
 PERKINS PHILIP 2000 SUP
 PERRY MELDEE 2003 SUP
 PETERSON LINDA 2004 SUP
 PETTIS ROY 2005 SUP
 PETTUS CHRISTOPHER 2006 SUP
 PHELPS CHARLOTTE 2007 SUP
 PHELPS JAMES DAVID 2008 SUP
 PHILLIPS CARL MAXEY 2010 SUP
 PHILLIPS SUE 2013 SUP
 PILLSBURY KATHY 2014 SUP
 PINKNEY ROBERT 2016 SUP
 PINKNEY VALERIE 2017 SUP
 PITTMAN PAMELA 2019 SUP
 POPE ELIZABETH 2023 SUP
 PORTER ANDREW 2024 SUP
 PORTER KENNETH 2025 SUP
 PORTER MARIANNE 2026 SUP
 POST JONATHAN 2027 SUP
 PUMP FLORENCE 2028 SUP
 POWELL JULIE 2030 SUP
 POWELL RICKLAND 2031 SUP
 POWELL SUSAN 2032 SUP
 POYSER KENNEDY 2033 SUP
 PRICE LINDA 2035 SUP
 PRINCE SARAH 2037 SUP
 RADEL JOHN 2042 SUP
 RAILINE JOHN 2043 SUP
 RANN LAVONA 2045 SUP
 RANN RICHARD 2046 SUP
 RAYBIN ROBERT 2053 SUP
 REASER MIKE 2055 SUP
 RECTOR ORETCHEN 2057 SUP
 RECTOR WAYNE 2058 SUP
 REEDY ROLAN 2060 SUP
 REST NEIL 2044 SUP
 RICE DONNA LEA 2065 SUP
 RICO JOE 2067 SUP
 RIENSCHKE STEVEN 2068 SUP
 RIGGINS BENITA 2070 SUP
 RITTENHOUSE DEIRDRE 2071 SUP
 RITTENHOUSE JAMES 2072 SUP
 ROA JOSEPH 2073 SUP
 ROA MISTY 2074 SUP
 ROBINSON PAUL 2082 SUP
 ROBINSON ROGER 2083 SUP
 ROBINSON ROBINSON 1788 SUP
 RODGERS JUDY 2084 SUP
 RODGERS LAURIE 2085 SUP
 RODGERS W. THOMAS 2086 SUP
 ROEHM BOB 2087 SUP
 ROEPKE RICHARD 2089 SUP
 RODAN CAROLE FORDEN 2090 SUP
 RODAN DAVID 2091 SUP
 ROLLER JENNIE 2093 SUP
 ROLLS WILLIAM 2094 SUP
 ROMANS PHILLIP 2095 SUP
 RONIS NAOMI 2096 SUP
 ROSE ROGER 2097 SUP
 ROSE RUTH 2098 SUP
 ROSENFELD SHANA 2099 SUP
 ROSENSTEIN ELYSE 2101 SUP
 ROSENTHAL ALAN 2103 SUP
 ROSENTHAL ANDREW 2104 SUP
 ROTH MARK 2110 SUP
 ROULAND S. LEE 2111 SUP
 ROY KENNETH 2113 SUP
 RUBIN ARTHUR 2114 SUP
 RUSH "RENFIELD" ED 2062 SUP
 RUTLEDGE CHARLES 2480 SUP
 SANDSTROM KATHE 2127 SUP
 SCHALEEN KENNETH ROBERT 2131 SUP
 SCHAUER MARY 2132 SUP
 SCHLINGER BENSON MIRIAM 2134 SUP
 SCHNEIER BRUCE 2136 SUP
 SCHOUTEN HERMAN 2137 SUP
 SCHWARZIN LIZ 2140 SUP
 SCROGGINS PHILLIP 2144 SUP
 SEGL HILLARY 2145 SUP
 SEIH DALE 2146 SUP
 SEKIYA JEFF 2147 SUP
 SELIGMAN BILL 2148 SUP
 BEYMDUR TOM 2150 SUP
 SHARPE HARVEY (DEE) 2151 SUP
 SMELL L. KAY 2153 SUP
 SHERRELL BICI 2155 SUP
 SHIBANO SACHIKO MRS 2157 SUP
 SHIBANO TAKUMI 2158 SUP
 SHIBLEY J 2159 SUP
 SHIELDS ROXANNE 2161 SUP
 SHIELDS SCOTT 2160 SUP
 SHIVERS JULIE 2162 SUP
 SHOJI JOSEPH 2163 SUP
 SHORE ROBERT 2164 SUP
 SIEBER RENEE 2166 SUP
 SIEGLING EVAN MILLS 2167 SUP
 SIMMONS ALICE 2171 SUP
 SIMS LAVERNE 2173 SUP
 SINGER DAVID 2174 SUP
 SINGER RAYMOND 2175 SUP
 SIRON DUSTY 2176 SUP
 SIRI GIANI 2177 SUP
 SIRON WILLIE 2178 SUP
 SITTON NANCY 2179 SUP
 SKIDMORE JAMES 2180 SUP
 BLAKER SHAROLYN 2181 SUP
 SLATE ALEXANDER 2182 SUP
 SLDAN JOHN 2184 SUP
 SLDAN KATHLEEN 2185 SUP

SUPPORTING

SLOAN KIRBY	2186 SUP	TERRILL JOHN	2266 SUP	WARREN BILL	2334 SUP
SMITH CHRISTOPHER	2187 SUP	TERRY CHARLIE	2267 SUP	WARREN KENNETH	2335 SUP
SMITH LAURENCE	2189 SUP	THE EBON KEEPER	2248 SUP	WARREN VICTORIA	2336 SUP
SMITH PETER J.R.	2193 SUP	THIEL TIM	2249 SUP	WATSON KENNITA	2338 SUP
SMITH RODFORD	2194 SUP	THOMAS PASCAL	2270 SUP	WATT-EVANS LAWRENCE	2339 SUP
SNYDER DAVID	2196 SUP	THOMPSON RAYMOND	2271 SUP	WATTS MARCUS	2341 SUP
SNYDER RAYMOND	2197 SUP	THORSEN JOHN	2274 SUP	WEBB FREDERICK	2342 SUP
SOKOLA JOSEPH	2198 SUP	TISHMAN GERALD	2276 SUP	WEBB VICKY LYNN	2343 SUP
SPENCE MARTY	2200 SUP	TOKER SUSAN LYNN	2277 SUP	WEBER MIKE	2344 SUP
SPERHAUK MARK	2203 SUP	TOLLIVER JEFFREY	2278 SUP	WELLS LETITIA	2351 SUP
SPIESS LAURA	2204 SUP	TOMPKINS CREIGH	2280 SUP	WELLS PATTY	2352 SUP
SPIVEY KATHI	2205 SUP	TONS ALEX	2281 SUP	WHITE DIANE	2355 SUP
SPRUELL DONALD	2206 SUP	TORRES DINEH	2283 SUP	WHITE JANICE LYNN	2356 SUP
SRASZAK STEPHANIE	2207 SUP	TORRES JACKLYN	2284 SUP	WHITE STEVEN	2360 SUP
SRUGLEY CATHERINE	2208 SUP	TREGO KAREN	2286 SUP	WHITE TED	2361 SUP
STADINGER PAUL	2209 SUP	TRIPP GALEN	2288 SUP	WHITMORE JACKIE	2362 SUP
STAHLMAN LINDA LEE	2210 SUP	TROCCHIA GREGORY	2289 SUP	WHITMORE STEPHEN	2363 SUP
STANLEY STEVEN	2213 SUP	TROWBRIDGE DENISE	3378 SUP	WIDNER ART	2366 SUP
STEELE MARIANN	2219 SUP	TUCKER WILSON	2292 SUP	WILKINS HOWARD	2367 SUP
STEIN DAVID	2221 SUP	TURNER KAREN	2294 SUP	WILLAUER MARLENE	2368 SUP
STEIN DIANA	2222 SUP	VAN ERIC	2297 SUP	WILLIAMS JAMES	2369 SUP
STEINHICE CHRISTOPHER	2223 SUP	VANDE BUNT MICHAEL	2301 SUP	WILLIAMS LINDA KAY	2371 SUP
STEPHENS DAVID	2226 SUP	VANDERBERG PATRICIA ANN	2302 SUP	WILLNER MARC	2374 SUP
STEPHENS MONICA	2227 SUP	VARGO ANNA	2303 SUP	WILLSON JILL	2375 SUP
STEVENS PEGGY	2231 SUP	VASS JAMES	2305 SUP	WILSON ROBERT	2376 SUP
STEWART DALLAS	2232 SUP	VAVER EDUARD	2306 SUP	WINSTON ALAN PRINCE	2377 SUP
STOLLER IRA	2235 SUP	VENEZIA CHARLES	2308 SUP	WINTERS LISA M.A.	2378 SUP
STOPA JON	2236 SUP	VENEZIA DIANA	2309 SUP	WOLDOW CATHERINE	2381 SUP
STREET SCOTT	2237 SUP	VENEZIA MYRA	2310 SUP	WOODSTER MARTIN MORSE	2382 SUP
STRINGFELLOW STEVE	2238 SUP	VENN KATHRYN	2311 SUP	WORLD JAMES	2383 SUP
STUCK DUANE	2241 SUP	VERWOERD WILLY	2313 SUP	WRIGHT RICHARD	2384 SUP
SUTHERLAND JAMES	2245 SUP	VINCENT ERIN	2314 SUP	WYATT MARIANNE	2386 SUP
SWANSON MARK	2247 SUP	VITALE EDMUND	2315 SUP	YAMADKA KEN	2388 SUP
SWANWICK MICHAEL	2248 SUP	VITALE LAURA	2316 SUP	YEAGER KATHRYN	2390 SUP
SWARTY STEVE	2249 SUP	VOGL THOMAS	2317 SUP	YORK DON	2393 SUP
SWYCAFFER JEFFERSON	2250 SUP	VON ASSELDONK BERTIE	3243 SUP	YOUNG JIM	2395 SUP
TAIT STEVEN KEITH	2252 SUP	WAGNER JANE	2319 SUP	YOWELL JALVE	2396 SUP
TAUSSI MICHAEL	2255 SUP	WAITSMAN LANNY	2320 SUP	ZANG LINDA	2397 SUP
TAUSSI PAT	2254 SUP	WALKOFF ROSE ANNE	2325 SUP	ZEIGLER DEBBIE	2398 SUP
TAYLOR M	2258 SUP	WALLIS MICHAEL	2328 SUP	ZELICH RICH	2399 SUP
TAYLOR MATTHEW	2259 SUP	WALSH MICHAEL	2329 SUP	ZEVE STEVEN	2402 SUP
TENNY MICHELLE	2265 SUP	WARD ANTHONY	2331 SUP		
TERRILL LYNNE	3177 SUP	WARD, SR. JERRY DEAN	3118 SUP		

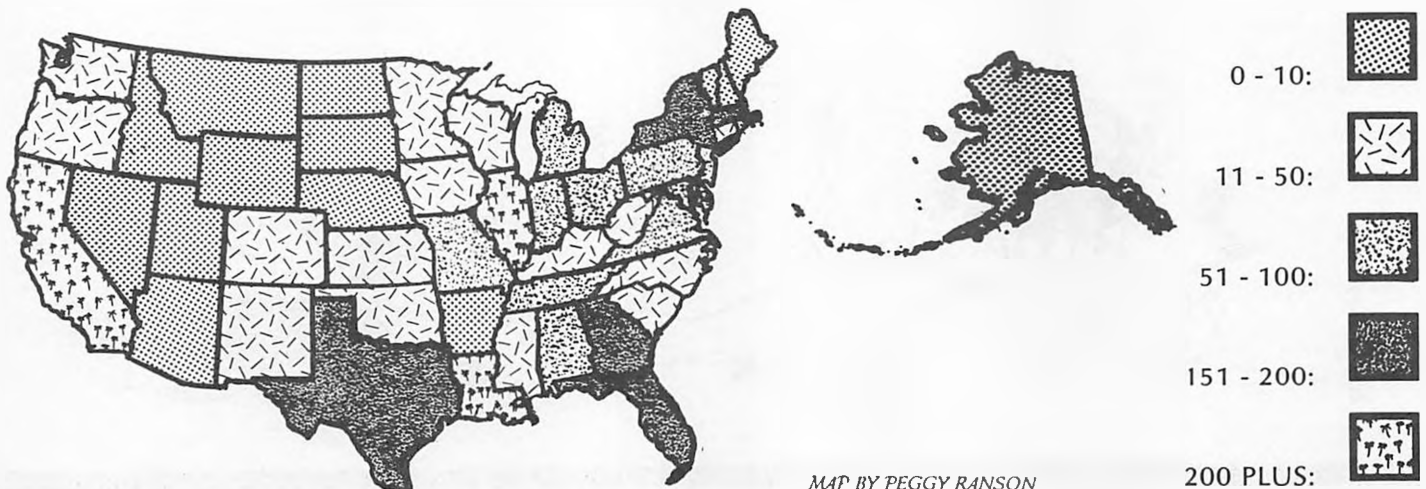
SAINTS

ACKERMAN ST FORREST	1080 ASC	MCCAULLA ST HERB	707 ASC
ACKERMAN ST WENDANE	1087 ASC	MODINE ST LAURA	578 ASC
BARIC ST WALT	566 ASC	MOLLOY ST PATRICK	17 ASC
BENVENISTE ST MICHAEL	845 ASC	PERTUIT ST MAXINE	744 ASC
BOUTILLIER ST LESTER	1111 ASC	PINON ST DAVID	737 ASC
BRENT ST ROBERT	731 ASC	PINTO ST WILLIAM	112 ASC
BSI COMICS (BOOK SWAP INC) ST CARL	747 ASC	ROBERTS ST DREDD	1072 ASC
COLLINS ST ROBERT	558 ASC	ROSENBERG ST DIANE	738 ASC
ETCHISON ST DENNIS	765 ASC	SINCLAIR ST MICHAEL	211 ASC
FINDER ST JAN	699 ASC	SMITH ST CHERYL	560 ASC
HANLON ST THOMAS	310 ASC	SPELMAN ST DICK	550 ASC
INTERGALACTIC TRADING CO. ST MICK	662 ASC	WALKER ST GAIL	561 ASC
KETTER ST GREG	1023 ASC	WEBB ST ERIC	636 ASC
KOCUREK ST NICK	559 ASC	WEBB ST VICKY	637 ASC
LAFFERTY ST RA	324 ASC	WISMER ST MARY	726 ASC
LITT ST ELAN JANE	642 ASC	WIXON ST DAVID	18 ASC
MAGAZINE STREET BOOKSHOP ST CATFOOD	749 ASC		



MEMBERSHIP BY STATES

includes attending, supporting, and presupporting memberships



MAP BY PEGGY RANSON



A Few Words from This Year's

FOURTH STREET ANTASY CONVENTION

"Metaphor."
"Moral Fiction."

"Integrated Artist."
"Fewmets."

"Some people aren't playing
with a full dictionary."

"How much love, intelligent conversation, wild partying, great music, and long-term friendships can one person stand? Find out at Fourth Street. I did!"

Jane Yolen

A convention for readers and practitioners of the fantasy arts.

June 17, 18, and 19, 1988 in Minneapolis, Minnesota

Registration: \$20 to June 1st, \$30 at the door

The Fourth Street Committee:

Chairman, Registration: David Dyer-Bennet

Treasurer: Martin Schafer

Program: Steven Brust and Will Shetterly

Publications: Emma Bull and Will Shetterly

Dealers' Room: Greg Ketter

Art Show: Erin McKee

For information and registration, please write:

Fourth Street Fantasy Convention

c/o David Dyer-Bennet

4242 Minnehaha Ave. S.

Minneapolis, MN 55406

A Closing Word

In our last progress report the Nolacon II committee promised to answer its mail within ten days of receipt. This has not always been possible — but we repeat the promise now, to try. Worldcons belong to all of science fiction fandom. We will do our best to keep you all apprised of where this one is going and how well we are doing. Your suggestions and comments noted and needed.

Once more, our address and phone:

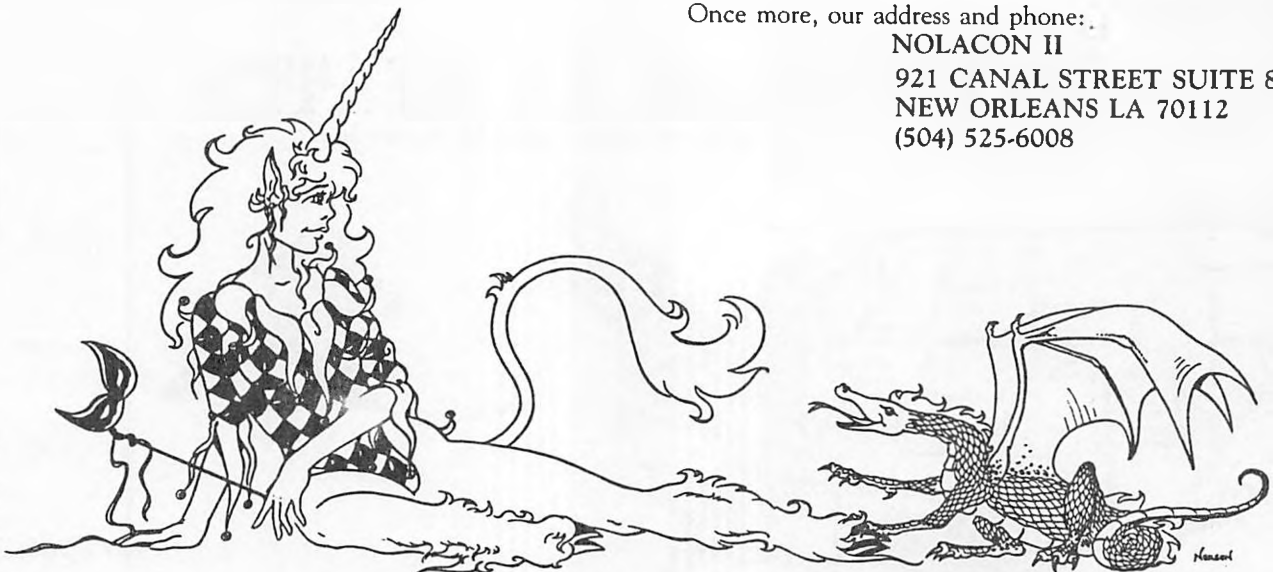
NOLACON II

921 CANAL STREET SUITE 831

NEW ORLEANS LA 70112

(504) 525-6008

Ingrid Neilson



IN MEMORIAM

Since our last progress report the science fiction community has endured a period of great loss. **Racoona Sheldon**, a.k.a. **James M. Tiptree**, is gone. **Nolacon II** lost one of its Saints, **Dave Pinon**. Below, three of us remember others who have gone on before ...

BILL BOWLUS

by *Dennis Dolbear*

Every time I sit down to write this — and I've tried a dozen times over the last nine or so months — the effort of writing an obituary for one of my best friends doesn't get any easier. I keep remembering what Lillian Roxon said about the great singer and composer, Richard Farina: "To this day ... friends still find it difficult to talk about his death." Or, in this case, even accept the reality of it. I've been out to the gravesite about a half-dozen times and try as I might, I still can't imagine Bill beneath that earth. I can't accept the fact that I'm not going to hear his roaring laugh or see his huge grin again; never going to have him show up at my door for Mardi Gras or Jazzfest or just for any damn reason with smoke in one hand and a case of beer in the other. We're never going again to go conventioning in his splendid mini-van, never again to party until the break of dawn, never going to shut down the bars again.

We're never going to do any of this because at the bitterly premature age of 29, a heart aneurysm, of all things, felled this vigorous, powerful, exuberant young man. In the end, it wasn't the strenuous partying but the strenuous exercise he always took — SCA fighter practice and blacksmithing, his hobby — that weakened the heart wall, which burst, prosaically enough, after a hot shower. And that was that: instantaneous.

His life was too short for his friends, and our grief is deep, nearly a year later. Which leaves me only to paraphrase the obituary (from the movie *Get Crazy*) spoken over the grave of Howlin' Blind Luther Washington: Bill, you were the strongest friend, the greatest driver, the hardest partyer, the greatest drinker of fine whiskey and lover of women ... and to the heavens I say, you've got my main man now. Take care of him — or I'll wax your ass.

TERRY CARR

by *William Rotsler*

Several times since Terry Carr died I've been asked to write something about him. I never know what to say. He was my friend, one of the handful of people in the whole world who I really cared what they thought of me and what I do. He died, he died hard and he died slow. And he died much, much too soon.

I'm about ten years older than Terry and could figure, statistically, I'd go first, thus saving me the grief of mourning him. (You'll notice this is a lot about me; well, that's the way it is in grief. He left me, he went too soon, I hurt, I mourn, I cry...)

You don't get too many friends in this life, the kind you say any damn fool thing to that pops into your mind. They are rare and wonderful, those kind of friends. I'll never forget him, I loved him, and I'm starting to tear up, damn it. You'd think that after all these months I'd be able to do this sort of thing "straight", but I can't. I'm not sorry or embarrassed that I have a hard time at the moment seeing the keys — I hunt'n'peck with one finger — but it does make for rather sloppy typing.

Maybe a grammatical error or poor syntax would happen, something Terry would frown at, sitting up there in the Great Fan Den in the Sky.

I hope this is the last eulogy I'm asked to write, for Terry Carr or for anyone. Hopefully.

ALFRED BESTER

by *Guy Lillian III*

I cannot claim to have known Alfred Bester well, but we are all witnesses to his genius. The first Hugo ever given for Best Novel went to *The Demolished Man*, and *The Stars My Destination* is widely regarded as the finest novel ever produced in the field. His work is indispensable to any library devoted to the genre. Everybody knows that who knows anything about science fiction.

But only a lucky few of us in my generation were witness to another aspect of Alfred Bester, and as we mark his passage from life this past October 1st, that quality needs noting.

When I was a boy in my 20's I worked a year for DC Comics in New York. The junior staff at DC created a fan magazine called *The Amazing World of DC Comics*, and for its third issue I planned a testimonial article about Julius Schwartz, DC editor and onetime SF agent. I called Bester, a former client of Julie's, and arranged a visit to his Madison Avenue apartments. I decided before I went over that I'd bother the great man no longer than half an hour — no more!

Needless to say, the cheery gentleman who greeted me would not allow me to hurry, and Alfred Bester's conversation was impossible to leave. He touched on Schwartz, with sparkling anecdotes, but then was off onto his own career as a comics writer, the difficulties of writing *The Demolished Man* (a whole day spent composing the "Eye-in-Stein" page), his years at *Holiday*, even the chimes in his grandfather clock. It was glorious to be there, to listen and to participate, for Bester, the master interviewer, drew me forth as if I were the most interesting and accomplished person he'd ever met. That was the special, magical quality of the man. I don't think I've ever met a person more vivid, more exciting, more alive. But he shared his exuberance; he made even the most callow acquaintance feel vivid, excited, alive.

I drifted home that afternoon. Only the gifts Bester gave me — a Japanese edition of *The Dark Side of the Earth*, a huge ream of golden parchment — kept my feet on the pavement. But those were trifles. The true gift was the memory of the greatest conversation I'd ever had. I'd met a man who filled life with joy and interest and work. It was an inspiration. I wrote my Schwartz article in its glow, and to my pride I'm told Bester read it and approved.

You can try to pay such people back for their contributions to your life. I hope I did when I introduced Bester to R. A. Lafferty at MidAmeriCon in 1976. SFdom tried to do so when ConSpiracy, the 1987 worldcon, named him a Guest of Honor. Alas, he could not attend and hear our applause. He had another appointment, another interview. Besides, life seemed such a joy to him I sometimes wonder if all he'd ever done was his own repayment, as thanks to the fates for letting him be alive.



Catalpa
Blossom